

PUTNEY AUCTION SERVICE

EQUIPMENT, TOOLS, VEHICLES, PRIMITIVES, FURNITURE, LAWN & GARDEN, TOYS, TOOLS, HOUSEHOLD

MOVING & ESTATE AUCTION

SUNDAY, JAN 12, 2020 AT 12:01 PM

2612 W. 2nd Ave. (Hwy 92 West) • Indianola, IA 50125

www.putneyauction.com

This Auction is a car guys dream, we have the tools to work on anything!!

Open Wednesday – Saturday 8am to 5pm for viewing.

Vehicles/Tractor/Trailers/Equipment: 2007 Chevy Classic 2500 HD, 26,000 miles, Duramax, 4 dr, 4x4, extra clean-Like New; 1960 Impala, 1 owner, 2 dr w/348 wedge motor, 2 spd power glide, black/red, Nice car MUST SEE; 1988 Caprice Classic, 1 owner, 70,000 miles, 4 dr, extra clean; 1984 Chevy Scottsdale, 3/4T, 2WD w/big block, only 61,000 miles; 2008 Ford Fusion, 5 spd, 4 dr; 1996 Ford F250 XLT, 4x4, reg cab, longbox w/big block-Nice Farm Truck; 1964 Chevy Impala SS, factory 4 spd, complete w/numbers matching-Needs restored; 2-2004 Chevy 350 express vans; 1971 Chevy Custom 20 pickup, 2WD, auto; 2008 Chevy 1/2T WT 2WD, reg cab, white, 128,000 miles; 1930 Model A, 2 dr Sedan-turns over but not running, solid body; Farmall 656, gas, NF, 540 PTO, 2 remotes, 2 pt, 5,100 hrs, Run Great; Int'l 300 utility, 540 PTO, 2 pt, great rubber, showing 973 hrs; Farmall F-12-tricycle front, all there not running, will turn over; IH Cub Cadet 125 hydrostat w/mower; IH Cub Cadet 1450 hydrostat w/mower; IH Cub Cadet 104, 3 spd w/mower; 2010 Discovery XLT500, fuel injected, 4x4, 2 seater w/dump bed; Massey Harris Pony w/1 btm plow- neat little trailer; 2007 H&H GN trailer, 24', flatbed w/6' beaver & ramps, tandem 7500 lb axles; Heston 1091 mower conditioner, 9'; IH 2 btm pull plow; 2 IH sickle mowers; IH fast hitch w/6' blade; IH loader; 2 pt to 3 pt bracket; 10th pull type single gang disc; Potato plow; IH fender sets; IH weights; Cub snowplow.

Lawn & Garden: 8' windmill; 4 snowblowers; 4 iron patio chairs; 4 swivel patio chairs; Patio table & chairs; Gas fire pit; Folding picnic table; 3 BBQ grills; 2 Wheelbarrows; 3 Red Wagons; Sawhorses; 13 steel wheels; Pull type lawn spreader; Craftsman lawn chipper; Troy Bilt rear tine tiller; Coast to Coast front tine tiller; Yard Machine 18" string trimmer; JD 48" mower deck; Garden plows; Garden planter; 2 Wheel sulky; Lawn cart; Stepladders; Old & new bikes; Runner sleds.

Shop & Tools/Outside: SNAP-ON TOOLS: 3/4 drive set w/ratchet & breaker bar; Complete set of 1/2" deep & shallow 6 pt & 12 pt, chrome, impact & swivel; Complete set of 3/8" swivels; Wrench Sets: combination, open & box end, long & short line & specialty; Many other specialty sockets; 35-40 ratchets 1/4" to 3/4"; Torque screwdriver; Torque wrenches-all sizes; Gear wrenches; Chisels; Punches; Ignition tuneup set; Scan tool w/several adapters; Scope; Bushing driver; Nut drivers; Pliers; Battery chargers; Environmental ignition testers; Brake tools; Drill sets; Toolbox: roller bottom, top chest & 2 side boxes; Many other Snap On items not listed; Blue Point 1/2 torque set; lug nut set; hub cap removal tool; flaring tool; twist sockets; channel locks-all sizes; fluke meter; tap & die; soldering gun; Matco torque master kit; Every distributor wrench know to man; Huge set of hub sockets; Mic's & calipers; Large set of air tools; Tech 2 scanner; Brake drum micrometer; A/C manual hose crimper; BG EGR service tool; Viper cooling system flusher; Full set Craftsman wrenches; Lots of Craftsman socket sets; Breaker bars; Files; Several pullers; Robinair 134A A/C system; Robinair R12 A/C system; Wynns tranny flush machine w/hooksups; PTS cooling system flush; Torch tanks; Sun 504 Distributor tester; Sun 1215 computer II car analyzer; L-Tec welding/cutting system; 30+ Curtis drawer organizers; 4 bolt bins-Full; Craftsman tablesaw; Shop vac; Blackhawk car jack; Everlast punching bag; File cabinets; Roller carts; 3 woodstoves; Creepers; Rigidig portable tablesaw; Rigidig portable Milwaukee compound miter box; Cast iron radiator; Delco cabinet full of new Delco parts; 4 floor jacks; Honda powered power washer; Hoffman brake lathe; Red Arrow 70T press; Metal bandsaw; 2 large shop air compressors; Solvent tank; Ideal staple maker-cast iron; Lincoln siphon tank; 3 barrel pumps-80/90, 80, grease; Sun Vat 40 battery tester; Pedestal shop fans; Big Easy lockout set; Ammco 705 on car brake lathe; Air hose reel; Squirrel cage fans; Stihl gas powered blower/sucker; Total trolley; Shop cabinets; Lots of fishing poles; Toboggan; 2 wheelers; Sentry safe w/combo; Lincoln welder; Jack stands; Oil buckets; Large collection of Mitchell Service manuals; Jumper cables; Cord reels; Shop lights; Many new filters; Bottle jacks; Temp scan tool; Open & short locating system; Spark plug extractor; Axle bearing puller; Jump pack; Butane torches; Hood lights; Lots of new oil & antifreeze; BG flush kits; Gas powered hedge trimmer; Ratchet straps; Ford Fan clutch wrench set; BG power steering flush kit; BG fuel injector cleaner; Case of 134A freon; Porter Cable saw; Grease guns; Corvette valve covers; Slide hammer; Chain hoist; 2-on car brake lathes; Many drop cords; 12V wench; Air tanks; Receiver hitches; Trolling motor; Timing lights; Small arbor press; Paint guns; Lots of a/c gauges; Battery testers; Freon analyzer; Vacuum pump; Body tools; Bench grinder; C Clamps; Stihl chainsaw; Bearing splitters; Old radios; Battery powered saws; Jigsaws; 1/2 drills; Porter Cable cordless tool sets; House jacks; Elec filet knife; Fishing equip; Router table; Coolers; Ammo boxes; Brace & bits; Bench belt sander; Box fans; Camping equip; Sound board; Dog kennels.

Advertising/Signs: Delco bearing box; BG power booster stand; Breeze clamps display; Crescent Chevy clock; A/C Delco clock; Motorcraft clock & display; Anco hose reel stand; Can't Kink brake line stand; Vintage Delco boxes; Texaco cans; Auto Lite cabinet; Briggs & Stratton gas engine sign; Cara Care Council sign; A/C Delco battery sign; A/C Delco Quality Parts sign; A/C Delco Trained Service technicians; A/C Delco Air Condition sign; A/C Delco Batteries sign; BG Power Booster sign; Prairie Farms milk box.

Toys: Structo livestock trailer; Structo auto transport; Structo livestock trailer & truck; Tonka Army jeep; Tonka bulldozer; Tonka car carrier; Tonka rescue; Tonka hyd truck; Tonka farm truck; Nylint roadster; Ertl IH pickup; Hot Wheels & Match Box cars.

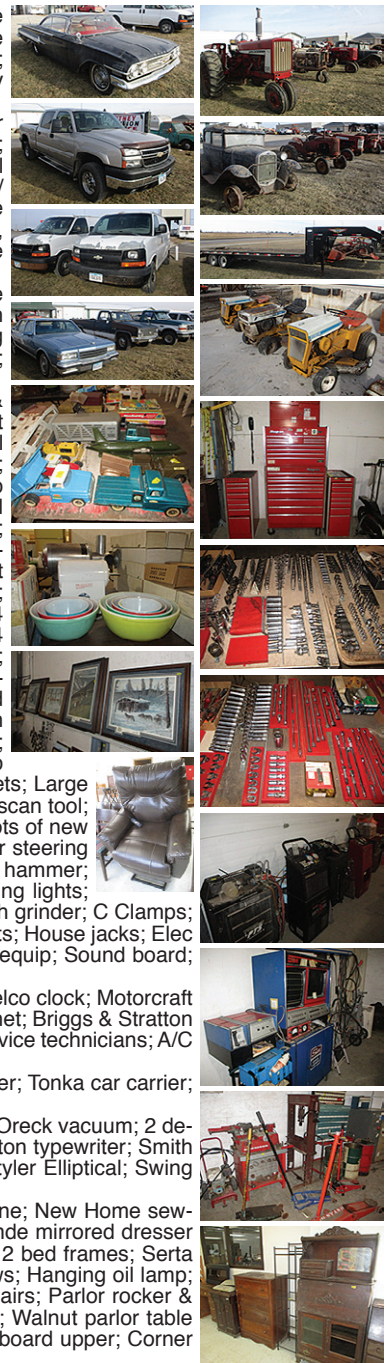
Appliances/Electronics/Exercise Equipment: Kenmore side by side refrigerator; Whirlpool gas stove; GE upright freezer; Oreck vacuum; 2 dehumidifiers; Keg-O-rator; Elec hanging fireplace; Zenith Stereophonic; HP printer; Brother sewing machine; Remington typewriter; Smith Corona typewriter; Zenith digital TV tuner; Johnson guitar; Body Fit BF-2937; Schwinn Precision Path; Sears Lifestyler Elliptical; Swing Line Gravity Machine.

Furniture: Bakers rack-NIB; Beveled glass secretary w/glass doors; Wooden desk; Household treadle sewing machine; New Home sewing machine; 3 drawer secretary; Matching mirrored dresser & chest of drawers; Modern entertainment center; Blonde mirrored dresser & chest of drawers; Blonde mirrored dresser & bed frame; Office desk; Home computer station; Chest of drawers; 2 bed frames; Serta loveseat; Coffee table; Lane cedar chest; Quilt rack; Folding stools; Various end tables & nightstands; 4 church pews; Hanging oil lamp; Square kitchen table; Duncan Phye w/chairs; Small drop leaf table w/3 chairs; Square table w/4 rolling padded chairs; Parlor rocker & chair; Matching swivel rockers; Piano bench; Leather lift chair w/massage; Lamps; Walnut piano stool w/glass feet; Walnut parlor table w/glass feet; Small trunk; Office chairs; TV trays; Child's table & chairs; Baby stroller; Baby play chair; Kitchen cupboard upper; Corner floor lamp.

Household, Collectibles, Antiques & Primitives: 1921-1926 silver dollars; Corelle Ware; Pyrex mixing bowls; Board games/puzzles; Costume jewelry; Sewing baskets; Mikasa crystals; Albums & 45's; Refrigerator dishes; Futura china; Cutlery; Meat grinders; Canister set; Color wheel; Ruby Red glass; Oil lamps; Serving trays; Cooling racks; Charlie the Bartender; Hen & nest; Binoculars; Howard Miller clock; Cast iron pans; Coffeepots; Linens/material/doilies; Jewelry boxes; Rolling pin; Fiesta ware; Keurig; Kitchen scale; Colored Pyrex nesting bowls; Juicer; Food dehydrator; Super meat grinder; Milk glass; Boy Scout clothing; Silver & copper items; Vintage & newer cameras; Pressure cookers; Afghans; GI Joe doll; 1000+ baseball cards; Tiger tin shooting target; 100+ vintage newspapers-WWI & WWII; Pie plate; Cookie jars; Cookie cutter; Brass candlestick holders; Bell collection; Vintage ice trays; Totes; Cookbooks; Carnival glass; Candy dishes; Vintage Viewmaster photos; Sewing boxes; Sewing & craft supplies; McMemories from McDonalds-dolls, ornaments, plates & figurines; Glass baskets; Blender; Painted china; Steins; Glass juicers; Roach boot shoe; Baseball memorabilia-some graded card, some autographed items; Game Boy advance; Game Boy color; Atari controller; Wire baskets; Metal artwork & home décor; Bowling balls; Match collection; Trinket adv; Candlewick; Enamel roaster; Toy guns & holsters; Little Golden books; Winchester belt buckle; AMT & Revell models; Holiday decor; Seashells; Nutcracker; Coleman cooks set; Advertising buckets; Luggage; Ice cream maker.

Artist Proofs by Larry Anderson: Yukon Wolves, Yukon Black Bear, Yukon Caribou, Yukon Dall Sheep, Spooked, Black Forest Mallards, Black Forest Pheasants, Mountain Monarch, Yukon Grizzly, Yukon Moose, Black Forest Bucks, Black Forest Bobwhites; Other assorted wall hangings.

And many more items left to be unboxed. Unique items to be discovered!



View Photos online @
www.putneyauction.com
&
www.auctionzip.com

Putney Auction Service

Mark Putney - Auctioneer
907 W 2nd Ave • Indianola, IA 50125
Cell 515-249-3676 • Office 515-961-4124

LIKE US on Facebook:
[Putney Auction Service](https://www.facebook.com/putneyauctionservice)