

LAND AUCTION

Live & Online Auction: 2 properties, 1 day

#1 DECATUR COUNTY | 198± AC, 2 Tracts

KILOTERRA is proud to represent the Reigler property – a perfect mix of recreation & farmland. Located east of Pleasanton on Hwy J66, this investment opportunity includes a pond & multiple building sites.

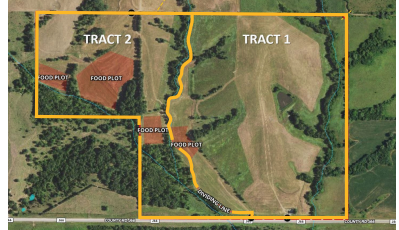
LAMONI COMMUNITY CENTER 108 S Chestnut St.
12:00 PM | THURSDAY, JAN. 27



Tract 1: 120± ac (Nearly 90% tillable)

Tract 2: 78± ac (Hunting & row crop)

- Sec 22 & 23 Hamilton Twp, IA
- Sold Buyer's Choice
- 10% due day of auction



#2 DECATUR COUNTY | 38.35± AC

KILOTERRA is proud to represent the Porter farm – an income property with hunting potential. This farmland is located adjacent to & directly east of Tract 1 above.

1:00 PM | SAME LOCATION



- 32.57± tillable acres, Paved frontage
- SW 1/4, NE 1/4 Sec 23 Hamilton Twp, IA
- 10% earnest due day of auction

Complete details, soil maps, & bidder registration
available online: www.KILOTERRA.com



chuck@kiloterra.com // 515.442.7709 // **CHUCK JOHNSON**

