

DAVISS COUNTY REAL ESTATE FARM & MOVING AUCTION

Auction

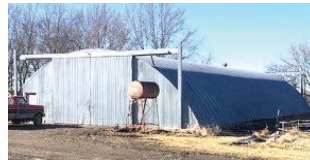
14509 State Hwy YY, Jamesport, MO

9:30 a.m.
Monday,
Feb. 4, 2019

Since we are moving out of state to help with family health issues, we will sell the following at 14509 State Highway YY, Jamesport, MO 64648. From Jamesport, take Highway 190 north approximately 7 miles to Granite Avenue; go west (or left) on Granite approximately 2 miles to Highway YY; go north (or right) on YY to first house on left side. From Gilman City, go south on Highway K to Highway B; turn east (or left) on B and go to Highway YY. Turn south (or right) on YY to second house on right side. Follow auction signs on sale day.



Real Estate: Consisting of 3 bedroom, open kitchen and living room floor plan, 1 bath upstairs with full basement and stool downstairs. Also includes full walkout basement access. French door in kitchen for access to outside on west side, small deck with 36" exterior door on north side and 36" exterior door facing the road on east side. Home has been remodeled. There is still some sheetrock that needs to be hung in hallway. There are 4 interior doors that need to be installed. Home sells as is / where is with no guarantees. Included in this 5.63 m/l acres is a 100' x 50' Quonset building with 2 slider doors at each end and a 36" walk-thru on front side. A very nice storage and shop area is wired for electricity and ready to go. There is also a 40' x 80' machine shed that is in good condition on this property. This tract is all about location — location with real good views. Anyone wanting to view this home should call 660-247-1914 for an appointment. Buyer to pay 10% down payment on sale day, made payable to Grand River Title in Gallatin, MO. Balance due in 30-45 days or on the day you close. Down payment is not refundable. This is a hard tract to find. You don't want to miss this one!



Truck & Farm Machinery & Skid Steer:

1993 Ford F250 single cab long bed 4x4 showing 251,566 miles, 7.3 turbo diesel engine, manual transmission, lock-out hubs. Truck has Meyer snow plow attachment that will sell separately.
1988 Ford 4x4 single cab and chassis, no bed, lock-out hubs.
2006 Gehl model 5640 turbo skid steer, 909 hours, diesel engine, a wheeled unit, sell with flat bucket (a real nice machine).
2017 United Trailers bumper hitch, 14' enclosed with smooth sides & V nose, tandem axle trailer & side door with 2 doors on rear (very sharp trailer).
Big Tex bumper hitch, 24' long trailer with 20' tilt bed & tandem axle, a really nice trailer.
2016 Polaris Ranger model 570, side by side 4x4, tilt bed with only 1029 miles at time of listing. Super nice and only one owner.
2001 Bayliner boat model 2455 with trailer, 24.6' long, inboard & outboard 305 engine. Also has canopy that sells with it (a real nice boat).
1977 CJ5 Jeep 4x4, manual transmission. Truck is being rebuilt & sells with many new parts.
IH Farmall 504 gas tractor, wide front with 3-point & fast hitch, same-as-new rubber on rear. Has a canopy & suitcase weights. Tractor has 239 hours on complete overhaul. The torque works (real nice tractor).
Terrain King 5' 3-point brush cutter (really good).
IH Fast-Hitch 2-bottom plow (real good).
IH 3-point Dirt Tumble bug scoop
IH model 990 hay conditioner
John Deere 4-row planter
John Deere cultivator
3-point bale stinger
Bumper hitch cargo carrier
Shop Tools & Hand Tools:
Parts washer (same as new)
Wooden 10' shop bench
72 hole bolt bin, metal
5 drawer metal tool parts organizer (very nice)
6 drawer parts bin
Craftsman table top drill press
Simpson 3000 psi power washer (new)
Old wood stove
Electric branding irons



Farm & Ranch 2/40 amp battery charger
Honda ES 6500 watt generator (really nice and good)
Acetylene torch cart and hoses
Snap ring pliers
Needle nose pliers • Screwdrivers
Very large lot of open end tool sets
Easy outs
Craftsman, Mac, and SK wrench and socket set
Impact sockets
Evercraft torque wrench
Lisle clutch wrench set
2 Husky tool cabinet 4 drawer rollabout
Husky 18 drawer and 10 drawer ball bearing drawers locking cabinet on wheels (very nice)
Complete set of vise grips
ATV 2500 LB 12 volt winch (nib)
Troybilt pole chainsaw, gas powered
Toro gas push mower
John Deere model F925 front mount mower with rear steer
2 Stihl 170 chainsaws, 1 same as new
Gold log chain (nib)
Several metal cabinets • Large pry bars
Propane weed burner and cart
Contractor scaffolding yellow rollaround
Toro GT model 2200 riding mower, 50" deck
Rigid 10" compound slider miter saw on 4' table and cart (real nice)
Craftsman 10" table saw with aluminum top on rollabout stand (real good)
2 portable air compressors
Husky model 1850 generator
4 shelf metal cabinet
Trailer tie downs
Grease and motor oil
105 gallon slide-in fuel tank with 12 volt pump
100 gallon slide-in fuel tank with 12 volt pump (looks new)
Cordless tools and air tools too numerous to mention
Weaver 220 air compressor (works excellent)
Lincoln AC225 electric welder
Auto darkening welding helmet
20 ton hydro press
Napa 3 1/2 ton floor jack • Jointer planer
Auto unlock kit • Slide-in toolbox
Organ rechargeable chainsaw
2 wheel dolly

Antiques & Collectibles:
Old tobacco cutter • Old florist crimper
Old metal bladed electric fan
2 metal white kitchen cabinets
Large lot oil lamps
Large lot meat hangers & saws
Antique commercial grinder
Kenmore commercial sewing machine &

Singer heads with factory heavy table
Large lot of metal ammo boxes
Handmade table top with glass top with memorabilia & buffalo nickels embedded (very nice)
Aluminum lunch pail
Westinghouse refrigerator in GM design (very rare)
Adv. tins & boxes
Sheep bell & cow bell
Wooden chicken coop with 1922 date
Large 4 gallon cookie jar
Sad irons • Tonka toys
Old antique kitchen cabinet with 2 flour bins, excellent condition
Old pulls
Wenzelmann wooden box hay rack adv.
Enamel top kitchen table with drawer
Ladder back wicker bottom chair
Green Army trunk
Old Bachelors 6 drawer chest (really nice)
Gentleman's dresser
Wood frame mirror, approx. 3'x3' (really nice)
Old Army tote
Old metal bed
3 metal white locker cabinets (really nice)
Cast iron floor register
Several metal toys
John Deere color 2 compartment sink
'50s style ladies' bicycle
Decorative garden bench
Decorative metal star
Cast iron park bench
Double yard windmill whirligig
Roll of decor barbed wire
Pepsi crate
Several old wooden house doors (very nice)
Huffman metal oil can
Antique wooden scribes
Cow stanchions
Antique barbed wire display
Metal tackle box
Reel type push mower
Old antique cook stove (very rare)
Kids' rocking horse, no frame
Galvanized bucket & coal hod
Wooden stool with secret hiding place
Old oak 7 drawer file cabinet
Rods, reels, & cane poles
Household & Misc.:
8' wooden table • 3 burner cast iron Turkey cooker • Bistro table
Egg incubators • Patio heater (nib)
Single inflatable kayak
Standard wall clock
Teter back swing exerciser
Frigidaire side-by-side refrigerator with ice &

water in door (very nice)
4 high back bar stools, 1 with no back
GE gas kitchen range
Hot Point electric washer & dryer, matched set (very nice)
Ashland wood heating stove (in excellent condition)
Clothes rack • 5 shelf metal cabinet
China hutch • Old china hutch
White sewing machine cabinet
3 drawer dresser with hankie boxes & mirror (very nice)
Walnut full size bed with fancy engraving in headboard
Lawyer's book shelf
Shark steam cleaner
Kitchen cookware, lots of it
Various kinds of ladies' boots & shoes (nib)
Electric bag seal cooker
Large variety kitchen cooking herbs & spices
Large lot of dry food & canned goods
Red plates & bowls
York Town dishes • 2-step stool
Queen size Lodge Pole pine bed (really nice)
Beveled edge mirror with black frame, approx. 4'x8'
5 drawer dresser with mirror (very nice)
Lots more household items too numerous to mention
White Kitchen Aid mixer
Pressure canners & several food warmers
Lots more



Guns & Gun Safe & Camping Gear:
4 hunting blinds • Cabela's dehydrator
Ice chest, large size • 10-gun gun safe
Eagle Arms 5.56 cal. AR15 semi-auto rifle (very nice)
DPMS AR15 rifle, 5.56 cal. semi-auto with scope
Russ & Alexander rifle, 32 cal. rim fire, hex barrel, very nice collector (very rare)
Winchester model 55 single-shot 22 cal. semi-auto
Knight .50 cal. black powder rifle
Acura .50 cal. black powder rifle with scope
Marlin model 60 semi-auto .22 cal. rifle
2 man ladder tree stand 20' tall
Coleman 13'x13' canopy (new)
Set camping tables

Special Interest Items:
Portable chicken house & 6 chickens
Walk-in freezer 10'x12' with cooling unit & 8'x12'dry walk-in storage, sells as 1 complete unit
Platinum man's wedding ring with 5 diamonds
2 beehives, 2 smokers and hat, honey extractor and all bee keeping supplies
Some copper scrap wire
Montana Silver Smith watch
Large lot of scrap steel

Grain bin to be moved or scrapped
Livestock & Equipment:
10 head Angus cross calves, born in Nov., 5 steers, 5 heifer calves
4' walk-thru gates • 15 panels 3'x8'
Electric fencing posts (new)
Stay Fix electric fence

Auctioneer Note: There are many more items too numerous to mention and list in each category. This will be a large auction, expecting to run 2 rings part of the day. If roads are closed, will postpone to later date. All merchandise will sell to highest bidder. Bring a friend and spend the day with us. Something for everyone.



Owner: Aaron & Kathleen Strine 509-429-5842

See our website for more pictures at RoppAuctions.com

Food Catered By Power Wagon

conducted by

RoppAuctions

Auctioneers: Norman Ropp and Terry Caldwell 660-247-1914

We bring high \$\$\$ bidders to our sellers.

Porta Pots Available

