

LAND AUCTION

FRIDAY, MARCH 6, 2015 10:00 AM

SALE TO BE CONDUCTED AT THE PROPERTY LOCATED

6 Miles West of Packwood, Iowa or

3 Miles East of Farson, Iowa, then 1 Mile South at 22nd Avenue

Auction Signs Will Be Posted

140 Acres m/l

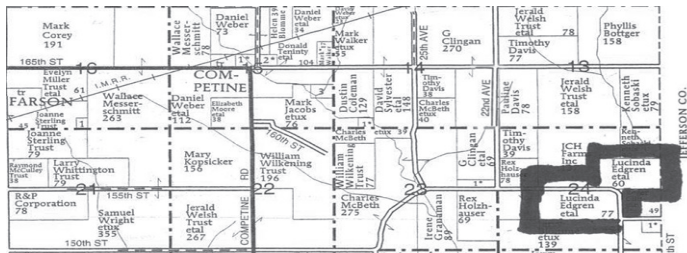
Competine Township, Section 24, Wapello County, Iowa

Selling in 2 Tracts

TRACT I - 80 Acres m/l with 76 NHEL tillable acres. CSR2 of 84.7.

TRACT II - 60 Acres m/l with 57 tillable acres. CSR2 of 71.6.

These tracts of land include high-production capability soil types.



TERMS: 20% down day of sale, balance in cash upon delivery of a Warranty Deed, accompanied by Abstract of Title showing merchantable title. Real estate taxes will be pro-rated to possession date, possession given upon settlement.

REAL ESTATE WILL SELL PROMPTLY AT 10:00 AM

For further particulars or an appointment to inspect the property,
please call the auction company: 641-682-5465.

Announcements made day of sale take precedence over any advertising.

EDGREN FAMILY FARMS, OWNER

Auctioneers:

Jim Kosman

Roger Clingan

Todd Carroll



AL MARTIN REAL ESTATE & AUCTION CO.

307 Church Street
Ottumwa, Iowa
641-682-5465

www.almartinauction.net

Find us on facebook at [AlMartinRealEstateAuctionCo](https://www.facebook.com/AlMartinRealEstateAuctionCo)