

Saturday, February 13, 2016 • 11:00 AM

Dallas County Fairgrounds
28057 Fairgrounds Rd. • Adel, IA

Visit our website for more pics!

For questions regarding items please call:
Kevin Frey @ 515-205-1212 or
Dave Polich @ 515-205-8046

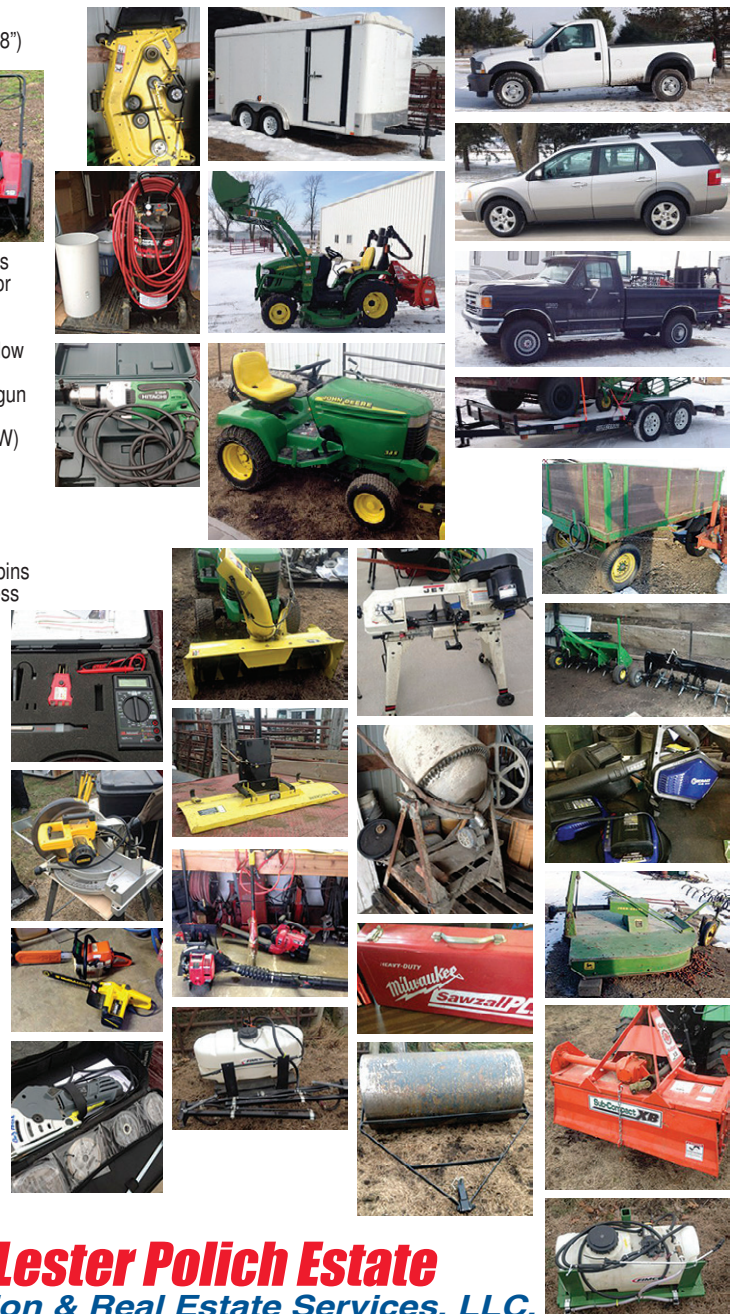
Vehicles & Machinery

- 2003 Ford F350 Super Duty 2WD 60,000 miles
- 2007 Ford Freestyle SEL (3rd seat) 130,680 miles
- 1990 Ford F250 4x4 unknown miles
- 2008 Sure-Trac car trailer
- 2005 Interstate enclosed trailer (inside- 14' 5", outside- 17' 8")
- Pickup box trailer
- 2012 JD 2320 4x4 tractor 290 hrs
- JD 200CX loader
- JD 62D drive over mower
- King Cutter XB Sub compact tiller 4'
- JD 345 lawn tractor 722 hrs
- JD 42" snowblower
- JD mower deck 48" bagger
- JD push blade 48"
- Yard roller 48", 3 pt sprayer - boom - 28 gal, 3 lawn aerators
- Receiver hitch sprayer 15 gal, 3 pt lawn spreader elec motor
- Push-pull lawn spreaders, lawn thatcher w/brackets
- 2 wheel utility trailer, (2) 3 pt mower - 509
- 3 pt blade, 3 pt Carry-All, 200 gal water tank, 10' 3 pt chisel plow

Miscellaneous Tools:

- Craftsman 600 watt generator, concrete mixer, Senco nail gun
- Box misc-1T chain hoist, Stihl weedeater, elec weedeater
- Floor jack, chopsaw - stand - 14", 3 pt posthole digger (NEW)
- 3000 lb elec winch, DeWalt compound mitre saw 12"
- Honda pressure washer, Toro pushmower w/bagger
- Snapper snow thrower, 8" bench grinder, Honda tiller
- 3000 watt Kipor generator, Mantis tiller, JD weedeater
- Victor acetylene torch - oxy - medium size, lights w/stand
- Delta dust collector, tablesaw, Hitachi tablesaw, hardware bins
- Lincoln 225 arc welder, 4'x8' storage cabinet, Rigid drill press
- Milwaukee 7145 finish nailer, Milwaukee J615-21 router
- Hitachi D13VF 1/2" drill, Cambell Haus air wrench chisel
- Battery charger, Bosch jigsaw, Chicago elec sawzall
- Northern circular saw, Craftsman 19V angle drill
- RotoZip rotosaw, DeWalt 4' sander, Hitachi impact driver
- Coleman 50 - 80,000 heater, heavy duty jack stands
- Performax multi cut saw w/base, Xantrax power inverter
- Elec multi meter, Waterloo toolbox/tools, NAPA tap & die set
- RV cords-tank-hoses, All Pro heater 30 - 50,000 BTU
- 8 gal shop vac, Ryobi 10" drill press, Jet 1/2HP bandsaw
- Shop parts washer, Cambell Haus 28 gal air compressor
- Shovels, jack stands, handheld sprayer, plastic gas cans
- Wheelbarrow, bottle jacks, hyd jacks, DeWalt 4" grinder
- Small Craftsman toolbox, Porter Cable sander, drill bits
- Milwaukee sawzall, glue gun, solder gun, air blow guns
- Ingersoll Rand 3/8 air ratchet, elec pole saw, fire ext.
- TroyBilt leaf blower, Stihl chainsaw, Milwaukee 16" chainsaw
- Jumper cables, Uni flame charcoal grill

- * Browning 20 gauge auto shotgun
- * Ruger 22 rifle
- * Miscellaneous household items



Robert Lester Polich Estate
Daugherty Auction & Real Estate Services, LLC.
 Chad Daugherty, Kelly Daugherty ~ Auctioneers

416 Greene St. Adel, IA (515) 993-4159 ~ d_auction@hotmail.com
 See Us on the Web at www.daughertyauction.com

The information in this brochure is from sources deemed to be reliable but it cannot be guaranteed by Daugherty Auction and Real Estate Services, LLC.