

# FARM LAND AUCTION

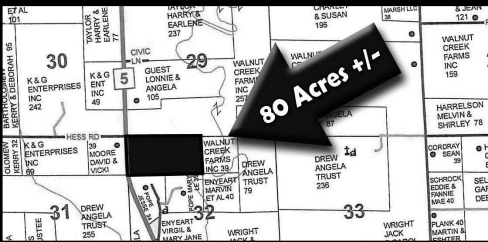
*Keytesville - Mike - Marceline Area, MO Area*

## FRIDAY MARCH 8

## 10 A.M.

We will sell at Public Auction the following farm. Farm sells on location. Take Hwy. 5 - 8 miles north of Keytesville (or 11 miles south of Marceline) to farm on east side of Hwy. 5. \* Real Estate Only - Please Be Prompt! \*

**Great Combination Farm \* Highway 5 Frontage!**



**FARM Consists Of 80 Acres m/l** - In N 1/2 of NW 1/4 of S -32, T-55, R-18, Chariton County - Gently Rolling Land - Great Combination Farm - Presently In Improved Pasture - Majority Armstrong Soils - Possible Tillable Acres - Good Ponds & Cattle Water - 1/4 Mile Frontage To Hwy. 5 - Several Home Sites - Rural Water Accessible - Barn - Excellent Hunting - Several Acres Woods To The South - Few Open Acres In Bottom Surrounded By Woods (Great For Food Plots) - Abundant Deer & Turkey - Close To Mussel Fork Creek - Easy Access In Convenient Location - Yet Private Setting - Don't Miss It! Terms @ ImanAuction.com



# LONNIE & ANGELA GUEST, SELLERS

## IMAN AUCTION COMPANY



Ben Iman/Office 660-388-6235 • Greg Clark 660-788-4298 • Gavin Clark 660-414-7830