

Aglron[®] Mt. Pleasant

Steffes Group Facility,
2245 E Bluegrass Rd, Mt. Pleasant, IA

THURS, MARCH 14, 2019 | 9AM

**CONSIGNMENTS
ACCEPTED ON:**

Mon., March 4th thru
Thur., March 7th, 8am-5pm
**LAST DAY TO CONSIGN
is Thurs., March 7th, 5pm**

AUCTIONEER'S NOTE: Please join us for this multi ring equipment auction with both live on site and online bidding available. Loading assistance will be available after 2:00PM on sale day. Cars and pickups may enter the grounds at 12:00 Noon for self-loading. Registration, terms, and details at SteffesGroup.com. Equipment must be removed by Friday, March 22, 2019, unless other arrangements are made. Contact auctioneers for owner information, new consignments or changes at 319.385.2000

4WD TRACTOR

John Deere 8640, 8,000 hrs., 50 series motor, 260 hp, cab, 3 hyd., 3 pt., 1000 PTO, (new motor), new air conditioning & turbo charger

MFWD TRACTORS

2011 Kubota M135X, 7,065 hrs., partial powershift, cab, 2 hyd., 3 pt., 540/1000 PTO, heat, A/C, LH reverser, sells w/ Kubota LA 2253 loader, joystick controls

2003 John Deere 8220, 7,500 hrs., powershift, cab, active seat, 3 hyd., 3pt., quick hitch, Lg. 1000 PTO, hammer strap draw bar
1996 John Deere 5300, 1,558 hrs., open station, 2 hyd., 3 pt., 540 PTO, ROPS, sells w/ JD loader

2WD TRACTORS

Massey Ferguson 2805, 5,500 hrs., partial powershift, cab, 3 hyd., 3 pt., Lg. 1000 PTO, Perkins V8 diesel

MF 85, diesel, 2 hyd., 3 pt.

Allis Chalmers D15 Series II, gas, WF

Farmland M, gas, NF

UTILITY TRACTOR

2017 John Deere 2032R, 10 hrs., MFWD, 3 pt., 540 PTO, loader

CRANE & WHEEL LOADER

1965 Linkbelt LS98A, crane, 471 Detroit engine, w/ 80' of boom section, 24" tracks, sells w/ 1 1/2 yd. drag line bucket, 279 hrs. on complete overhaul

Case W20, Wheel Loader diesel, 4x4, hydrostatic drive

SKID LOADER

1997 Bobcat 773, 2,016 hrs., Kubota, 46 hp., Lexan sides, no door, heat, foot controls, manual detach, aux. hyd., sells w/ 68" tooth bucket

CONSTRUCTION EQUIPMENT

1995 Etnyre, chip spreader, owner states approx. 1,603 hrs., (computer shows 103 hrs.), self propelled, 8.0L Cummins, hydrostatic drive, ground speed radar, automatic gate controls, 2WD, 12' hopper

FEC, Pipe Driver w/ 80' of leads, self firing engine, 8 ton drive Industrial forklift baskets & racks

PLANTERS

White Agco 8200, 12x30", front fold, flex bar, trash whips, spike closing wheels, drag chains, seed firmers, hyd. bi-fold markers, 1000 PTO, vacuum units w/ 2 sets of corn plates, & 1 set bean plates, monitor, 3 section shut offs, lights

John Deere 1760, Conservation, 12x30", pull type, front fold, vacuum, ground driven, no till coulters, insecticide, HD spring down pressure

John Deere 7000, 12x30" ground driven, extended hitch, trash whips, insecticide boxes, monitor

John Deere 7000, Conservation, 6x30", no-till coulters, liquid fertilizer, monitor

John Deere 7000, 6x30", liquid tanks ground driven, NT coulters

John Deere 7000, 4 row, dry fertilizer boxes, row cleaners

IH Cyclo Air 900, 6x30", ground driven, pull type, markers, sells w/ corn & bean drums & monitor

DRILL

Great Plains 2000, 20', 30 x 10" spacing, ground driven, w/ CPH-20 No-till caddy, S/N GP103202, hyd. coulters depth adjustments, hyd. markers, 2 bar spring rear drag harrow, seed firms, lights, pull type

John Deere 750, 15', ground driven, dolly wheel hitch, pull type, small seed attachment, meters

John Deere 750, 15', pull type, dolly wheel, grass seed, Yetter markers, spike tooth harrow

John Deere 515, no till drill, 15', on yetter cart, grass seed box

Sunflower, 40'

Houck, Hitch for JD 750 drill tandem pulling, swinging drawbar w/ spring assist

TILLAGE

Great Plains VT3030 Ultra-Till, vertical tillage, 30', 8" coulters spacings

Kewanee 1020, disc, 20', pull type, hyd. fold, tandems,

Gates Magnum, harrow, 48', pull type, 4 bar spring tooth harrow, rear fold, 30" tines, front jack

IH, row crop cultivator, 12x30"

John Deere, plow, 5 bottom

GRAVITY WAGONS

DML, 350 bu.

Unverferth 325, 325 bu., extendable hitch, LH dump

Killbros, 300 bu., center dump

Killbros, 300 bu., center dump

GRINDER MIXER & SEED TENDER

Owatonna 83, grinder mixer, 540 PTO, 2 ton, drag

Shop Built, seed tender, hyd. drive auger, single axle

MOWERS

1998 Schulte, rotary cutter, 540 PTO, 15', wing fold, pull type, front & rear chain guards, tandems across

Woods HD315, rotary cutter, 540 PTO, 15', pull type, wing fold

TRUCKS

1994 Freightliner 9100, grain truck, 923,100 miles, Detroit Series 60, Rockwell 9 spd., air shift PTO, air ride seat, air brakes, 600 bu. aluminum dump bed, rear combination door, roll tarp, tandem axle w/ front tag axle

1988 Mack Econodyne RD690S, dump truck, shows 421,610 miles, Mack E6-300 hp., Mack 12 spd., air ride seat, 17' Koenig dump body w/ manual gate, air shift PTO w/ air controls, Cambelback suspension, rear pintle hitch w/ air brake actuated pintle ring slap reducer

1986 Ford F800, w/ 2500 gal. SS tank, 16 hp. Honda pump

Ford C7000, firetruck, 1500 gal. steel tank, 350 gpm PTO pump

1998 GMC 3500, cube van, approx. 104,000 miles, (newer transmission)

TRAILERS

1980 Dorsey, flatbed semi trailer, 40', tandem axle, spring ride

1980 Trail King, tandem axle, 14'x79", pintle hitch, fold up ramps, 10,000# GVWR

Deckover Trailer, 7000# triple axles, 14'x8' + 4' dovetail, front tool box, dual folding ramps

NEW FENCING

(120) 20' 6 Bar Continuous Fence Panels w/ clips & connections

(60) 10' Interlocking Corral Panels

EQUIPMENT

Farm King, snow blower, 74", 3 pt., 540 PTO, (NEW, NEVER SOLD)

Westendorf WL-42, loader, w/ JD mounts, left handed controls

John Deere, pallet forks

Rhino 350, blade, 12', 3 pt., quick hitch ready, hyd. angle, hyd. shift, hyd. pivot

Hesston Stackhand 10,540 PTO, rear slide discharge

3 pt. bale/stack moving attachment
Grain cart tire (Fits Kinze 1050 Cart)

LAWN MOWERS

2017 Ferris 3200, 100 hrs., zero turn, 72" deck, gas, suspension seat, non-flat front tires

2016 Simplicity

Broadmoor SCS, 21 hrs., riding mower, 48" deck, Briggs & Stratton 25 hp.

2016 Simplicity Prestige SCS, 10 hrs., riding mower, 52" deck, Briggs & Stratton 25 hp., 4WD, power steering

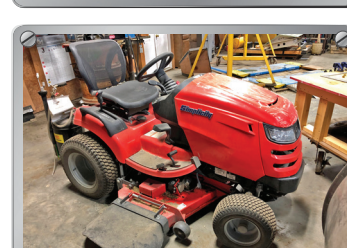
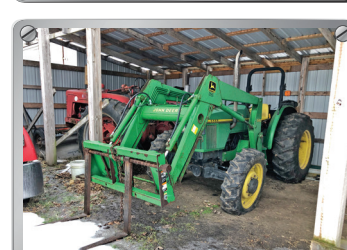
2016 Simplicity Prestige SCS, 10 hrs., riding mower, 50" deck, Briggs & Stratton 27 hp., electric deck lift, power steering

Kubota ZG222Z, 672 hrs., zero turn, 48" deck, Kubota V-Twin gas, 22 hp., electric start

Honda self-propelled lawn mower

SHOP EQUIP.
NEW SKIDSTEER ATTACHMENTS

ITEMS ADDED TO THE WEBSITE DAILY. SEE THE COMPLETE LISTING AND LOT PHOTOS ONLINE!



TERMS: All items sold as is where is. Payment of cash, check or credit card must be made sale day before removal of items. Statements made auction day take precedence over all advertising. \$35 documentation fee applies to all titled vehicles. Titles will be mailed. IA Sales Tax laws apply. Canadian buyers need a bank letter of credit to facilitate border transfer.

SteffesGroup.com ONLINE BIDDING

Steffes Group, Inc. 2245 East Bluegrass Rd, Mt. Pleasant, IA | 319.385.2000

