

**Retirement CONSTRUCTION
EQUIPMENT AUCTION**

WED., MARCH 6TH @ 9:30 A.M.

SALE TO BE HELD ONSITE AT: 1036 Highway S56, Russell, Iowa



DOZERS: '05 Caterpillar D6RXW dozer, tach shows 11,704 hrs.; '00 Caterpillar D7RXL dozer, tach shows 19,201 hrs.; '01 Caterpillar D6RXW dozer, tach shows 15,240 hrs. **EXCAVATORS:** '05 Caterpillar 325CL excavator, tach shows 6,549 hrs.; '05 Caterpillar 304CR mini excavator, tach shows 2,610 hrs. **LOADER BACKHOE, TRACTOR, SCRAPER & ROLLER:** '12 Caterpillar 420E 4wd loader backhoe, tach shows 3,916 hrs.; International 1066 tractor, tach shows 4,335 hrs.; CAT 435 18 yard pull type scraper; 8' double drum sheeps foot roller. **TILING EQUIPMENT:** '00 Buckeye 7200 "Magnum" wheel trencher, tach shows 3,282 hrs.; (5) Maxi Stringer tile trailers. **TRUCKS & TRAILERS:** '00 Peterbilt 377 day cab semi, shows 1,009,195 mi.; '06 TEREX Load King 55 ton removable gooseneck triple axle trailer; '91 Ford F-600 single axle utility truck, shows 34,425 mi.; '88 Chevrolet C65 single axle fuel truck; '05 Ford F-150 Lariat 4wd extended cab pickup, shows 156,878 mi.; Ridgeline 8'6" x 24' tandem axle bumper hitch trailer; Shop built 8' x 32' triple axle gooseneck trailer; 8,500 gal. alum. fuel trailer; '75 Ford F-700 fuel truck, non running. **LASER EQUIPMENT:** Spectra GL722 Precision Laser; Apache Bullseye 3 guidance system. **FARM EQUIPMENT & SHOP TOOLS:** Allied 695 loader, w/joystick control, 60" pallet forks, off of IH 1066 tractor; Thermoline Power Plus TA 10/270 H welder/generator, Honda engine; Quantity of quality shop & business related items.



ALEXANDER CONSTRUCTION INC. - SELLERS
Craig Alexander - President • Phone: (641) 344-0808
AUCTION MANAGERS:
John Probasco (641) 856-7355 • Jim Huff (319) 931-9292

**Jefferson County, Iowa
LAND AUCTION**

MON., MARCH 11TH @ 10:00 A.M.

Auction Venue: Lockridge Community Center, Lockridge, IA



40 ACRES± • 1 TRACT

The Steele Farm is located in Section 16, Lockridge Township, Jefferson County, Iowa. (3/4 miles north of Lockridge, Iowa.) This property offers productive tillable farmland that is currently in hay production, improved pastureland and attractive recreational acreage. There are several nice home building sites on this property and Rathbun Rural Water as well as electricity is in close proximity.

Jerry D. & Mary L. Steele - Sellers

ATTY: Tim B. Kuiken • Foss, Kuiken & Cochran, P.C. • Fairfield, IA • Ph: (641) 472-3129
AUCTION MANAGERS: Jim Huff (319) 931-9292 • Jeff Hoyer (319) 759-4320

**No-Reserve FARM
EQUIPMENT AUCTION**

FRI., MARCH 15TH @ 9:30 A.M.

SALE TO BE HELD ONSITE AT: 1995 Hwy. 5, Knoxville, Iowa



HIGHLIGHTS: '09 JD 8530 MFWD tractor; '07 JD 7810 MFWD tractor w/740 loader; '09 JD 9860STS 4wd combine; '09 JD 608C 8R30" corn head; '09 JD 630F 30' flex platform; 32' & 30' head trailers; '04 JD 4710 sprayer; '08 JD 1770NT CCS 16R30" planter; '05 JD 1790 CCS 16/31 planter; '13 Brent 882 grain cart; JD 712 17-shank disc chisel; JD AMS equipment; '04 Freightliner Columbia truck; '00 Freightliner Century truck; '13 Wilson 43' hopper bottom trailer; '11 Wilson 43' hopper bottom trailer; '12 Utility 50' van trailer; Flatbed sprayer tender trailer; '17 Load Max 30' gooseneck flatbed trailer; Batco 1335 belt conveyor; Westfield WR80-31 truck auger; '17 Mitsubishi forklift; (2) Feed Train 155 cattle creep feeders; Nice selection of farm support items.



JIMMY GOFF • CELL: (641) 820-4633

MANAGERS: Luke Sullivan (309) 371-5214 • Michael Sullivan (309) 333-0916

**No Reserve
RETIREMENT AUCTION**

THURS., MARCH 7TH @ 10 A.M.

SALE TO BE HELD ONSITE AT: 22552 150th St., Bouton, IA



Please join us for this nice auction of low houred Case-IH farm equipment! Every item was purchased new by the Hoffmans and has had the best of care. This will be a small auction that will last less than 2 hours, so please be on time. **HIGHLIGHTS:** Case-IH 9330 4wd tractor, 2,800 hours; Case-IH 7220 MFWD tractor, 2,020 hours; Case-IH 2166 2wd combine, 2,838 hours; Case-IH 1020 25' platform; Case-IH 1063 6 row 30" corn head; Unverferth 25' head trailer; IH 900 Cyclo-Air 12 row 30" planter; Unverferth 7000 grain cart; Case-IH 4800 34' field cultivator; DMI Tiger-Mate 30' field cultivator; DMI 527 disk ripper; IH 710 6-bottom plow; IH snow blower; IH 30' rotary hoe; IH 183 12 row 30" cultivator; '80 Chevrolet C70 grain truck; Large selection of farm items.



RICHARD HOFFMAN ESTATE

AUCTION MANAGER: Matt Sullivan (309) 221-7001

**Jefferson County, Iowa
LAND AUCTION**

MON., MARCH 11TH @ 2:00 P.M.

Auction Venue: Packwood Community Center, Packwood, IA



40 ACRES± • 1 TRACT

The Garrels property is located in Section 8, Polk Township, Jefferson County, Iowa. (4 miles northwest of Packwood, Iowa.) Make plans now to attend this upcoming Jefferson County, Iowa land auction. This farm offers productive tillable farmland, has a CSR2 of 75.6 and is in an excellent state of fertility. We urge you to take a look at this nice tract that sells with full farming rights for 2019.

Cecil C. Garrels Farm Inc.

REPRESENTING ATTORNEY:

Philip McCormick • Whitfield & Eddy Law • Mt. Pleasant, IA • Ph: (319) 385-9522

AUCTION MANAGERS: Jim Huff (319) 931-9292 • Jeff Hoyer (319) 759-4320

**Marion County, Iowa
LAND AUCTION**

MON., MARCH 25TH @ 11:00 A.M.

Auction Venue: Cobblestone Hotel & Suites, Knoxville, IA



97 ACRES± • 2 TRACT

Open House: Friday, March 15th from 4:00 - 5:00 P.M.

The property is located in Section 8, Knoxville E Township, Marion County, IA in the southeast portion of Knoxville, IA. This property features highly productive tillable farmland with a CSR2 of 80.3! There are 2 ponds on the farm and it offers unlimited potential for future development. Tract 2 consists of nearly 3 acres and features a very nice shop building that has a concrete floor, an older mobile home and includes an attractive new home building site.

Central Iowa Recreational Development Company - Seller

Rep. & Closing Atty: Craig S. Shannon • Pella, IA • Ph: 515-245-4300

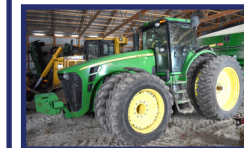
ATTY: James V. Hicks • Knoxville, IA • Ph: 641-842-2197

AUCTION MANAGERS: Jim Huff (319) 931-9292 • John Probasco (641) 856-7355

**No-Reserve FARM
RETIREMENT AUCTION**

MON., MARCH 11TH @ 9:00 A.M.

SALE TO BE HELD ONSITE AT: 404 S. 1st Street, Edina, Missouri



HIGHLIGHTS: '13 Challenger MT765D track tractor, 2,053 hours; '07 JD 8430 MFWD tractor, ILS, PS, 4,461 hours; '97 JD 8400 MFWD tractor, 6,124 hours; Kubota M135GX MFWD tractor w/LA2254 loader, 2,676 hours; Kubota M126X MFWD track tractor w/LA2253 loader, 3,197 hours; '12 JD S680 4wd combine, 1,836/1,219 hours; '18 MacDon FD135 35' flex draper head; '11 Gleaner 9250 35' flex draper head; JD 608C 8 row 30" corn head; Unverferth AWS-36 36" head cart; Camoplast 36" combine tracks; '11 JD 4730 self-propelled sprayer, 1,605 hours; (2) JD GS3 2630 displays; (2) JD StarFire 3000 receivers; '13 JD 1790 CCS 16/31 planter; Great Plains 1500 15' no-till drill; Meridian 400 SLD seed tender; Great Plains 3000TM Turbo-Max 30' vertical tillage tool; Great Plains 8332 32' field cultivator; Sunflower 1435 26' disk; Great Plains NP1540AA Nutri-Pro 17-knife NH3 applicator; Killbros 1175 grain cart; BBI MagnaSpread 14' fertilizer spreader; Doyle 35' field loader conveyor; '13 JD R450 self-propelled windrower, 959/672 hours; '14 MF Hesston 2250 large square baler; '14 JD 569 Premium round baler; '15 Kubota TE4052T 4-basket tedder; Tube-Line TL6500AX2 bale wrapper; Plus much more!



RON YORK • RON'S CELL: (660) 341-0202
AUCTION MANAGER: Matt Sullivan (309) 221-7001

**Des Moines County, Iowa
LAND AUCTION**

THURS., MARCH 14TH @ 6:00 P.M.

Auction Venue: Danville Community Center, Danville, IA



75 ACRES± • 1 TRACT

The JP Wagner Farm is located in Section 4, Danville Township, Des Moines County, Iowa. (1/2 miles northwest of Danville, Iowa.)

This farm features highly productive tillable farmland and offers an outstanding CSR2 of 87.4! This property sells with full possession for 2019 and is conveniently located just north of Danville, IA.

JP Wagner Farm

Pamela Day, Jill Bowers & Mark Wagner - Sellers

ATTORNEY: Andrew L. Mahoney • Burlington, IA • Ph: (319) 753-6201

AUCTION MANAGERS: Jeff Hoyer (319) 759-4320 • Jim Huff (319) 931-9292

**Wayne County, Iowa
EQUIPMENT & LAND AUCTION**

TUES., MARCH 26TH 2019

PLEASE NOTE THE TWO TIMES & LOCATIONS:

EQUIPMENT AUCTION @ 9:30 A.M.

To be held on the farm at 29614 Lineville Road, Lineville, IA



HIGHLIGHTS: '08 JD 9870 4wd combine; '10 JD 635F grain platform; '09 JD 608C cornhead; '08 Case IH 180 Puma 180 MFWD tractor selling complete w/ Case IH 770 loader; '05 McCormick CX85 MFWD tractor; '72 JD 4320 tractor; '64 International 706 gas tractor; '53 Farmall Super M tractor; '04 Freightliner Columbia semi, 12.7 Detroit engine; '00 JD 850C dozer; CAT 463 pull type scraper; Soil-Max Gold Digger Stealth ZD tile plow; Case IH MRX690 5 shank disc ripper; JD 2018 20' batwing mower; Parker 839 grain cart; Several other pieces of quality farm equipment & farm related items.

163.29 TAXABLE ACRES± • 1 TRACT

LAND AUCTION @ 4:00 P.M.

To be held at the Lineville Community Center, 213 Main St, Lineville, IA

The Vogel Farm is located in Section 18 & 19, Grand River Township, Wayne County, Iowa. (1 1/2 miles west of Lineville, Iowa)

This farm offers improved pastureland with excellent fences, several ponds with concrete waters and there are several frost free waters located on the property. There is also high signs of all species of wildlife including whitetail deer and wild turkey on this property.

Brad & Joan Vogel - Sellers

ATTY: Tonita Helton • Helton Law Offices • Leon, IA • Ph: (641) 446-8664

AUCTION MANAGERS: Jim Huff (319) 931-9292 • John Probasco (641) 856-7355