

MOVING AUCTION

SATURDAY, MARCH 14TH, 2015 • 11:00 AM

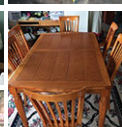
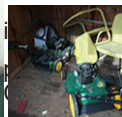
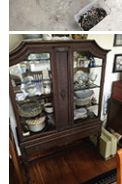
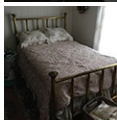
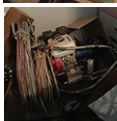
1020 East Main • Lamoni, Iowa

Mr. and Mrs. Lawrence have sold their acreage and are moving.
Will be offering the following at Public Auction:

Restored 1973 John Deere model 820 tractor; Hotsy steam cleaner; Poulan chainsaw; Elec welder 35-230; Pressure washer; Airless paint sprayer w/Honda motor; Snow Devil Snowblower w/elec start--this unit is like new; Cub Cadet lawn tractor 52" cut; Battery charger; Air compressor; Rear blade; 2 btm plow; Woods RM59 mower, all have 3 pt hitch. 12' alum boat; Yard cart; New & used wood posts; steel gates; 2 pushmowers; Exhaust fan; PCV pipe; plumbing supplies; Truck toolbox; roto-roter snake; shovels & rakes.

Furniture: Dining room table & 8 matching chairs; Antique Flat glass china cabinet; Antique dresser & mirror w/matching dresser; Oak dresser & mirror; Antique brass bed; Metal bed; Square lamp table; Floral wing-back chair & matching sofa; end tables; round coffee table; treadmill; canning jars; plus kitchen

Terms of Sale: All items must be day of sale. Good checks &



SALE ARRANGED & CONDUCTED BY



**Graham
Auction Service**

Auctioneer: Rollie Graham

Toll free 1-866-685-3144 • 515-707-4269

Like us on Facebook

www.grahamauction.com