

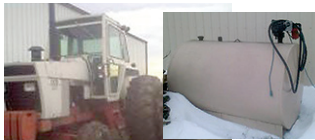
# SPRING CONSIGNMENT AUCTION

**MARCH 23 @ Madison County Livestock Auction • Winterset, IA**

**SALE STARTS AT 11:00 AM - Starts with Hay then Moving on to Other Items**

**Check [www.bestauctionservices.com](http://www.bestauctionservices.com) for Additional Pics and Info.**

**Web Site Updated Daily. Items May Start Arriving March 17. See Partial Listing Below.**



**TRACTORS:** Case 1370, 4837 hrs, duals, clinch hitch, good front tires 50% rear, 1000 RPM PTO only, 12 FWD gears, dual hyds; International 3788 2+2, 2856 hrs, model 88 series, 08847 serial #, 3 hyds, 1000 RPM PTO; Ford 8600, 4829 hrs, clean, dual hyds, full set of frt wrts & set rear wrts, 540 & 1000 RPM PTO, heat AC, good tires; Farmall M, Low hrs on major OH, needs rear tires & paint, good straight tin; Massey-Harris 30, restored, new tires on the back; International 806, WF w/loader, front end recently overhauled.



**VEHICLES & TRAILERS:** Ford F350 2000, 4 dr dually, 6 spd, 7.3 dsl, banks turbo, custom front & back bumpers, 264,000 miles; GMC SLE 2500, 1997, 4x4, New trans, 8.1L 454, auto, PW, PL, 200,164 miles, 5th wheel, wiring needs work; Ford Taurus, 1997, 6 cyl, 4 dr, 176,000 miles; Mercury Sable, V6, 141,000 miles, needs tires; Stock Trailer 7x16, new floor & brakes, wheel bearings recently repacked; Transcraft log trailer 1985 model #TL90K-45 w/boom & grapple, steel floor, 2 stage pump.



**AG EQUIPMENT:** JD 7000, 8R planter, front fold, 36" spacing; spring tooth attach fits the front of a 6R planter; IH 900 air 4R planter, both drums, monitor (pending); 13 ft JD field cult w/gauge wheels; Danuser posthole digger 3 pt; Danuser post driver 3 pt; CIH manure spreader w/slop gate & new steel floor; JD 1209 hay conditioner, field ready; NH 56 rake; JD 37 sicklebar mower, 9' bar, new sickle, parts only; 3 pt 6' field cult; Auger wagon (PTO shaft bent) w/top; JD 7000 4R planter; 13' IH disk; 1000 gal nurse tank on cart, new briggs/stratton 550 transfer pump; Tuffline 5' ATV disc, one yr old; Homemade 6 bale trailer; hay stabbers; Land pride 8' rotary mower; International 46 small sq baler; JD model 40 bale thrower fits 336-337-448 w/elec thrower.



**TOOLS & MISC:** Hypertech power programmer, for 1999 to 2000 GM truck; 60 gal pickup spayer; 500 gal fuel barrel w/pump; new wooden bunks; set of 18.4x38 tractor chains, like new used very lightly; creep feeders (4 hole); set of clamp on duals 18.4x38 fits IH; set of bolt on duals 18.4x38 fits IH hub; 100 gal fuel tank w/manual pump; 15' bulk bin w/auger & motor; farmstar creep feeder on wheels; alum topper fits full size chevy; 20' bale conveyer w/elec motor; grease guns; misc hand wrenches; air box sander; air grease gun; topper fits 4 dr ford 2000 to 2007 fiberglass.



**4 WHEELER & GO-KART:** 1998 Yamaha 4 wheeler, 2WD, 350 warrior; 2006 Kazuma 50cc 4 wheeler; Go-Kart 5HP briggs (needs clutch); 1995 Starcraft slide-in pickup camper, gas, elec, heat, stove, fridge.

**HAY (SOLD BY THE BALE):** 100 mixed grasses lrg rounds pending net wrapped; 102 mixed grasses net wrapped; 63-3x3x8 large squares mixed grasses; 11 CRP bales.

**TOM BRADLEY 515-202-7687 • SCOTT EVANS 515-669-1768  
TIM CHRISTENSEN 515-290-6925**

**TERMS OF AUCTION** - Cash or good check, bid number will only be received with picture ID; All items paid for day of sale; not responsible for theft, accidents, or inadvertent errors in advertising ; all announcements made day of sale take precedence over advertising; all items sold as-is, where-is, with no warranties; buyers have one week to remove items.

**RESTROOMS ON SITE • SALE BARN CAFE WILL BE OPEN DAY OF SALE**

***Selling a reputation you can trust, one client at a time !***

