

FARM RETIREMENT**CASE IH**

AUCTION

TIMED ONLINE**Closes: Tuesday, April 3, 2018 at 1PM****Equipment Located:** 1585 275th Street Letts, IA

Preview & loadout will be by appointment

AUCTIONEER'S NOTE: RD Hafner Farms have operated in the Letts area for more than 60 years. Andy has decided to retire and has rented his farm ground. Most all pieces were purchased new and stored inside along with being waxed, detailed and serviced at the end of each season.**MFWD TRACTORS**

'11 CASE-IH Magnum 315, 555 hrs., MFWD, 19-4 powershift, lux. cab

'09 CASE-IH Magnum 335, 1,857 hrs., 19-4 powershift, lux. cab

'94 CASE-IH 5240, 1,083 hrs., MFWD, 16 spd, powershift, cab

COMBINE

'06 CASE-IH 2377, 1,258sep./1,639eng

HEADS & HEAD TRAILERS

'07 CASE-IH 1020, grain platform, 25'

'95 CASE-IH 1063, corn head, 6x30"

Killbros utility transport, gear style, 20'

EZ Trail 25', wagon gear style

PLANTER

'09 CASE-IH 1250 Early Riser

TILLAGE

'03 Landoll 9800, field cultivator

Case-IH 690 Conser-til, disc ripper

TRAILER

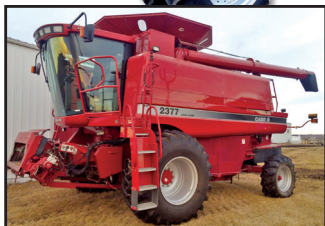
'13 Victory Cargo Trailer, 12'x6'

FORK LIFT

TMC, forklift, 8,541 hrs.

BATWING MOWER, GRAIN CART & WAGONS, SNOWBLOWER, TECHNOLOGY, LAWN MOWER & SHOP EQUIPMENT**ANDY HAFNER**

Contact Russ Lamp of Steffes Group, 515.432.6000 or by cell, 319.212.0774

**SteffesGroup.com**

319.385.2000

Steffes Group, Inc., 2245 East Bluegrass, Mt. Pleasant, IA