

WAGNER-DENT AUCTIONS CONSIGNMENT SALE

Front street (US 65) • Humeston, Iowa 50123 (Near Caseys & Grocery Store)

THURSDAY, MARCH 29TH, 2018 • 10 AM

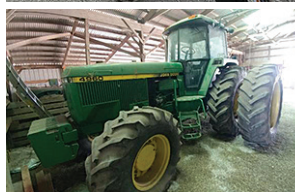
Guns & Misc Items 10 AM: Winchester Win-lite 12 gauge automatic, improved cylinder; Ted Williams 22 automatic rifle w/ Sears scope; HR model 649 22 cal revolver w/6" barrel; some 22 ammo & other supplies; (12) 6.5 Caterpillar brand skidsteer tires; lawnmowers; riding tractor mowers; chainsaws; Couplamatic hydraulic hose crimper; Coates 1010 tire machine-super power model; other small items, tools & etc.

Machinery Approx 11 AM

Haying Equipment, Mowers, Balers, Accumulators, Rakes & Processors: Hay Buster New Holland 282 16x18 hyd tension square balers sells with Farm Hand; 8 bale accumulator w/quick attach for above balers; Farm Hand 8 bale grabber for loader; Kuhn 8 bale grabber for loader; New Idea 5410 10' 3 PT disc mower; Woods 55" Batwing mower; Haybuster 2650 bale processor, near new, SN# 461850; Kelderman 10 wheel rake; 8' Rotary Sythe; (2) Vermeer WR-20V rakes; 10 wheel V rake; extra nice Vermeer Rebel 5500 round balers, shaded; extra nice Vermeer TM disc mower, pull type, sledged; 2630 disk mower conditioner w/rubber crimping rolls; (2) 456 New Holland 9' sickle mowers; several basket rakes-IH, New Holland, John Deere; John Deere 14T square baler, stored inside; Evans built 6 bale HD bumper hitch hay transport; House 6' rotary 3 PT cutter.



Tillage Equipment-Plows, Field Cultivators, Harrows, Etc: McFarland 28' flex harrow; IH 510 5 bottom 16" steerable plow, nice; IH 540 4 bottom 14" steerable plow, nice; Krause narrow spaced finished disc; McCormick 12' disc w/6' spacing's; nice Case IH 24' model 4600 Vibrashank field cultivator; near new Delta chain harrow; 24' John Deere 230 black gang off set disc, SN#021168A; (2 or 3) 4 section harrows w/carts; Krause 24' disc.



Tractors: John Deere 4450 tractor, hours unknown, quad-rang transmission, SN# H026694, near new 18.4x38" rears w/duals, 11.00x16" front tires, 3 remotes, approx 500 hrs on re-built engine & transmission; John Deere 4960 FWA tractor, big PTO, triple hyd, axle mount 20.8x42" rear tires & duals, 18.4x26" fronts; 2009 Case IH magnum tractor, MFD, 2125 hrs, 46" rear tires w/duals, 4 remotes, 540-1000 PTO shafts; IH 706 gas tractor, wide front, recent overhaul, new radiator, wide front, 15.5x38" rear tires; Ford 7700 tractor, wide front, 5409 hrs, new long block, spin out wheels, 540 and 1000 PTO shafts, new battery & new tires all around, excellent tin & glass, sharp tractor; D-14 wide front AC tractor, new 13.6x26" rear tires; Foton 404 FWA tractor, 439 hours, cab, air & heat, sells w/Westendorf TA-25 loader.



Trailers: 2014 Alum-line 7x21 aluminum livestock trailer, never titled, 0 miles, sliding center gate, spare, sells w/original warranty; Kiefer industrial 16' low profile trailer, 2' beavertail w/ramps; Blair 30' GN flatbed trailer.

Vehicles: 1992 White-GMC road tractor; new air bags; new drums & brakes, a little over 1M miles, 11.1 liter Detroit diesel engine w/Eaton-Fuller 9 spd transmission, drive tires 60% rubber; 1993 Chevy 4x4 3/4T, diesel pickup, automatic; 1968 Ford F-750 grain truck, Custom Cab, 16' steel box w/hoist; 1973 Ford F-700 Custom Cab, V8, 5&2 trans, all steel 18' box & hoist, white color, stored inside, 62,000 miles; 1962 Chevy 60 truck, 4x2 trans, 14' box & hoist; Cub Cadet 4x4 UTV; Polaris Explorer 4x4 SN#9958968300; Kawasaki 400 4x4 Prairie; from the Spurgin estate-V10 Dodge 4x4 extended cab pickup & Ranger V6 4x4 pickup extended cab, automatic.



Sprayers, Planters & Tanks: 2007 Kinze 1223 planter, center pivot w/KP2 Max monitor, corn & bean units, 2000 acres on rebuild; John Deere 7200 Max Emerge Vac 12 RN planter, set up for liquid fertilizer; White 12 RN 5100 planter, setup for liquid fertilizer; 45' boom trailer w/elec pump & controls w/500 gal poly tank; 80' boom sprayer GPS Raven Pro switch controls, Sprayer Specialties XLRD 1000 gal tank; 1275 gal, 1650 gal, 1700 gal & 2500 gal White poly tanks used for water only; John Deere 7000 8R narrow planter, ridged frame, Yetter trash wipers, dry fertilizer; John Deere 8R wide planter, no till coulters, Yetter trash wipers; 12 RN 7200 John Deere ridged planter, Donahue trailer to sell separately.

Fencing Equipment: (30) New cattle panels; (500) used steel T posts; (60) steel fence braces; never used Shaver 8" post driver w/all attachments; Danuser digger w/12" bit.

Wagons: Parker 300 bushel gravity flow on HD gear; HD Kewanee 47 gear w/Parker 300 bushel box; HD gear w/center dump gravity box, John Deere 953 gear w/hoist (needs all new tires).

Other: Ford-New Holland 155 single axle manure spreader, hauled one load; 24' bale conveyer w/electric Motor; 3PT blades from 6'-8'; NH3 toolbars; (8) square tube 30' parking lot light poles; few 220 light fixture for above poles; John Deere end-gate seeder, 3 PT seeder; 50 gal square fuel tank w/hand pump; Grain-O-Vator; Jet PTO wire winder; 14.5' sweep auger; Cox PU bale stabber w/controllers; John Deere 148 loader w/4430 mounts. Gleaner F-2 diesel combine, sells w/4R narrow corn head & 12' grain table. **Other items expected & arriving daily.**

Terms: Cash, check or credit cards. No items will be removed until settled for. Sellers or auction company are not responsible for accidents, errors in listings or lost items. Announcements made day of sale take precedence over any printed matter. When registering for a buyer number proper I.D. will be required. More pictures online. Lunch by Morman Trail After Prom Committee.

Don Wagner, 641.931.6832

Owner/Auctioneer

DonaldWagner44@yahoo.com

Jason Dent, 515.231.5176

Auctioneer

ImagineRodeo@gmail.com

Art Snider, 641.777.6413

Auction Setup & Phone Bids

Snifarm@GRM.net

Wagner-Dent

Box 435, Humeston, Iowa 50123

Don Wagner
Owner/Auctioneer



www.Wagner-DentAuctions.com