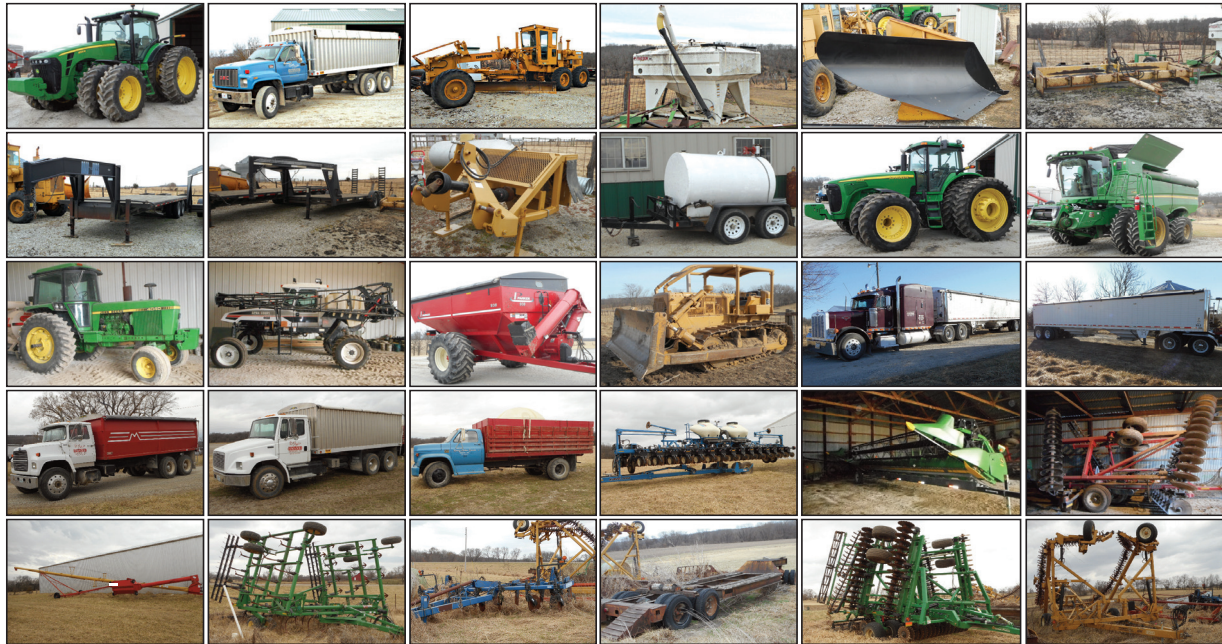


# FARM MACHINERY & EQUIPMENT AUCTION



## SATURDAY, APRIL 8, 2017 • 10:00 AM RONNY & HELEN SWANK

793 NW Hwy 146, Brimson, MO

**DIRECTIONS:** From Trenton, MO, go W on Hwy 6 to Hwy 146, then N approx 9 miles to sale site. From Bethany, MO go E on Hwy 136 to Hwy 146, then approx 23 miles to sale site. Watch for Arnold Auction sale signs

**Tractors:** **2005 John Deere 8520**, RW8520P026390, 8.1L engine, 2002 hours, MFWD, ILS, 42 gpm hydraulic pump, 4 outlets, Large 1000 pto, 16 speed powershift, guidance ready, GreenStar ready, Firestone 480/80r50 rear duals, Firestone 480/70r34 front duals; **2010 John Deere 8320R**, 1RW8320REAP006409, 9L engine, 829 hours, MFWD, ILS, 60 gpm hydraulic pump, 4 outlets, Large 1000 pto, 16 speed powershift, HID lighting, guidance ready, GreenStar ready, Firestone 480/80r50 rear duals, Firestone 480/70r34 front duals; **1979 John Deere 4040**, 4040H002130R, 1950 hours showing, 359 diesel engine, quad range transmission, 2 hydraulic outlets, 1000/540 pto, new Firestone 18.4-34 rear, 9.00-24 front, new paint.

**Farm Machinery:** **2012 John Deere S660 combine**, 1H0S660SCC0747291, 760/492 hours, premium cab w/HID lighting, guidance ready, yield monitor, deep tooth chaffer, high capacity, fold away unloading auger, power fold hopper extensions (400 bu.), PRWD, 3 speed transmission, Goodyear 520/85r42 duals, 600/65r28 rears; **2012 John Deere 630F platform**, 1H00630FPC0746520, course tooth sections, short stone dam; **2009 John Deere 608c corn head**, H0608cx731991, 30" knife rolls; 8 row corn head reel; John Deere 2630 monitor, autotrac, very little use; John Deere Starfire 3000 receiver, SF1; **4450 spray coupe, 60' boom**, 708 hrs, Perkins engine, automatic transmission, Raven 460 controller, 3 section, 400 gallon tank, new tires (12.4-24 rear, 9.00-24 front); **2012 Kinze 3600 planter**, 6500 acres, 16/31 row, bulk fill, mechanical bean units, precision planting corn units, precision planting rowflow, air clutches, row cleaners, Keeton seed firmers, kpm3; Great Plains 24' drill, 7.5" spacing, Yetter markers; John Deere FB-A, 9' grain drill, 3 boxes (primary seed box, grass seed box, fertilizer box); Phillips 45' rotary harrow, Case IH RMX340 30' disk; John Deere 400, 20' rigid rotary hoe; John Deere 980 34' field cultivator; Glenco 8 row cultivator; 30' Great Plains vertical tillage tool; New Holland 270 square baler, 56" pickup; Westfield drill fill grain auger for 10 wheeler; Westfield MD 100-71 swing away hopper; Rem 2100 grain vac, hydraulic fold auger; IH 560, 6 bottom plow; **Parker 1000 bushel grain cart**, new vertical augers; Torex ditcher-3pt, 540 pto, 40" wheel, like new; Blu-jet ripper, 7 shank, drawbar caddy; 1983 Landplane; 2-4yd dirt scoops; 12' box scraper; 2-3pt bale spears; 3 pt bale carrier; John Deere 3 pt, 7' brushcutter; Friesen 220 seed tender, GX 160 Honda engine; Itco 1200 gal water tank; John Deere 200 gal saddle tanks; tractor duals.

**Bulldozer & Graders:** Caterpillar D-6C dozer, tilt blade, good, SN76A3055; 1983 720 Champion grader; 104 Galion grader.

**Truck & Trailers:** **2000 Peterbilt 379**, N-14 Cummins 525 hp, 13 speed, 4 new batteries, new alternator, new AC condenser, new starter, 10 mo warranty on motor; **2002 FL80 Freightliner diesel**, 223,595 miles, 7.2L 3126 Caterpillar engine, automatic transmission, 22.5 tires, 18' KANN aluminum grain bed; **2002 GMC C8500 diesel**, 112,343 miles, 7.2L 3126 Caterpillar engine, automatic transmission, 22.5 tires, 20' KANN aluminum grain bed, flow divider for drill fill; **1983 Ford 9000 diesel**, 185,243 miles, Cummins engine, 7 speed transmission, 22.5 tires, 20' Wheeler 3 way rock/grain bed; **1974 Chevy C60**, 66,805 miles, 327 gas engine, single axle, 16 ft bed, 8 speed; **25' combine header wagon; 30' combine header wagon;** Wilson 2012 Pacesetter, 42'x96" w/72" sides, all aluminum wheels, electric tarp (1 yr old), aluminum sub frames, both ends, new brakes, air bags, shocks, & brake pads; Titan 7x18' flatbed trailer; Road Boss 8x23' flatbed trailer; gooseneck trailer, dually; 28' equipment trailer; 500 gal Woodworth fuel trailer; LOWBOY w/single axle dolly under 5th wheel; pickup bed trailer.

**Lawn Mower:** John Deere 62" deck lawn tractor.

**Auctioneers Note:** More items added by sale date. Outstanding, well maintained, clean machinery! The Swanks have a strong reputation for good farming practices, superior equipment and machinery maintenance. **Letter of credit suggested for purchases over \$100K.**

**Terms:** Cash or good check only. Statements made on sale day take precedence over any printed materials. No items removed until settled for. Not responsible for accidents or theft. Concessions available. Restrooms provided.

For more info call Arnold Auctions at 660-789-2365 or 660-358-4900 or Ronny Swank at 660-789-2825.

## ARNOLD AUCTION CO.

Ed Arnold (660) 789-2365 • Lonnie Sewell, Guest Auctioneer • [www.northwestmissouri.com](http://www.northwestmissouri.com)