

ANNUAL "NO RESERVE" COLLECTOR CAR AUCTION

EXPECTING 500 LOTS! CHECK OUT SEVERAL HUNDRED EARLY CONSIGNMENTS ONLINE!

YES!

STILL TIME TO
CONSIGN!

MON., APRIL 4, 2016 AT 9:00 A.M.

OPEN HOUSE: SUNDAY, APRIL 3RD • 12:00 - 5:00 P.M.

SALE TO BE HELD AT SULLIVAN AUCTION SITE LOCATED 1 1/2 MILES EAST OF HAMILTON, IL ON HWY. 136



'71 CHEVELLE CONV. - BIG BLOCK 396



'72 PLYMOUTH CUDA - AAR BADGING



ONE OF SEVERAL FIRST GENERATION CAMAROS



'69 CHEVELLE SS - BIG BLOCK 396, 4 SPD.



ONE OF SEVERAL GREAT TRI FIVE CHEVY'S



'67 CAMARO SS CONV. - BEAUTIFUL 4 SPEED!



'60 LINCOLN CONTINENTAL CONV. - WOW!



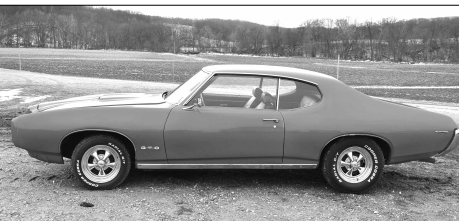
'71 CAMARO ZL427 CONV. W/ 15K MILES



'74 FORD BRONCO 4X4 - FRAME OFF!



'66 CHEVY CHEVELLE CONV. - FRAME OFF!



'69 PONTIAC GTO - 400 V8 - 4 SPD.!



'48 CHEVY THRIFTMASTER - GREAT RESTO MOD

Make plans to attend this gigantic annual "No Reserve" collector car auction that has grown to be the largest held ANYWHERE in the Midwest! This year's sale will include the highest quality and largest quantity of muscle cars & classics that we have ever sold.

We invite everyone to come out for an Open House that will be held Sunday afternoon, April 3rd, from 12 Noon - 5:00 P.M. Pre-registration will be available at the Open House to help beat the huge Monday morning rush. Food will be available both days. Be prepared and bring an extra bidder as we will be running (2) indoor auction rings simultaneously. Once again, we hope to see you at this year's Spring Collector Car Auction.

Thanks! Sullivan Auctioneers!

- '68 Chevy Camaro Coupe
- '67 Chevy Camaro SS Conv.
- '11 Chevy Camaro ZL427 Conv.
- '69 Chevy Camaro Coupe
- '68 Chevy Camaro Coupe
- '98 Chevy Camaro SS
- '89 Chevy Camaro IROC Z28
- '72 Chevy Camaro Coupe
- '71 Chevy Chevelle SS Conv.
- '66 Chevy Chevelle Conv.
- '69 Chevy Chevelle SS
- '64 Chevy Chevelle Conv.
- '71 Chevy Chevelle - Big Block
- '62 Chevy Impala Conv.
- '67 Chevy Impala 2-Door HT
- '64 Chevy Nova II
- '67 Chevy Nova 2-Door
- '68 Chevy Corvette Coupe - 327/4 spd.
- '69 Chevy Corvette Coupe
- '71 Chevy Corvette Conv.
- '82 Chevy Corvette Coupe
- '75 Chevy Corvette Coupe
- '93 Chevy Corvette Conv.
- '96 Chevy Corvette Conv.
- '01 Chevy Corvette Coupe
- '88 Chevy Corvette Conv.
- '79 Chevy Corvette Coupe
- '84 Chevy Corvette Coupe
- '75 Chevy Corvette Coupe
- '75 Chevy Corvette Conv.
- '82 Chevy Corvette Coupe
- '74 Chevy Corvette Coupe
- '74 Chevy Corvette Coupe
- '67 Ford Mustang Coupe
- '99 Ford Mustang Conv.
- '66 Ford Mustang Coupe
- '66 Ford Mustang Coupe
- '91 Ford Mustang Conv.
- '98 Ford Mustang Coupe
- '67 Ford Mustang Coupe
- '62 Ford Galaxy 500 2-Door HT
- '67 Ford Fairlane 500 2-Door HT
- '73 Mercury Cougar XR7 Conv.
- '72 Plymouth Cuda Coupe
- '69 Plymouth Barracuda
- '72 Dodge Challenger
- '74 Dodge Charger
- '69 Plymouth Roadrunner
- '69 Pontiac GTO 2-Door HT
- '71 Pontiac Firebird Coupe
- '72 Pontiac Grandville Conv.
- '99 Pontiac Trans Am Conv.
- '62 Pontiac Tempest Lemans Conv.
- '77 Pontiac Lemans
- '87 Pontiac GTA Coupe
- '00 Pontiac Trans Am Coupe
- '79 Pontiac Trans Am
- '00 Pontiac Firebird Coupe
- '96 Pontiac Trans Am Coupe
- '78 Pontiac Trans Am
- '68 Olds Cutlass Conv.
- '75 Olds Hurst W25
- '62 Buick Invicta Conv.
- '67 Buick Skylark Conv.
- '48 Chevy Thriftmaster Pickup
- '42 Chevy Rat Rod Pickup
- '69 Chevy Stepside Show Truck
- '65 GMC Stepside Show Truck
- '36 Chevy Pickup
- '54 Chevy 3600 Pickup
- '57 Chevy Pickup
- '67 Chevy Pro Street Pickup
- '97 GMC EXT Cab Show Truck
- '67 Chevy Pickup
- '78 Chevy Stepside 4WD P/U
- '80 Chevy Stepside Pickup
- '82 Chevy S10 Show Truck
- '68 Chevy C10 Pickup
- '96 Chevy 1500 EXT Cab Show Truck
- '54 Ford Pickup
- '77 Chevy Pickup
- '73 Chevy Pickup
- '76 Chevy Cheyenne
- '39 Ford Pickup
- '63 Chevy Corvair Pickup
- '18 Ford Model T Truck
- '25 Ford Model T Truck
- '57 Chevy Cameo Pickup
- '87 Ford Pickup - 1,479 mi.!
- '74 Ford Bronco 4x4
- '70 Chevy 4x4 Pickup
- '72 Chevy 4x4 Pickup
- '91 Chevy Custom Show Truck
- '80 GMC 4x4 Pickup
- '89 Dodge Ram Charger 4x4
- '48 Chevy Snub-Nose Car Hauler
- '51 Ford Rat Rod Pickup
- '50 Chevy Truck
- '95 Ford F150 4x4 Pickup
- '94 Ford Bronco XLT 4x4
- '89 Ford F150 Short Bed Pickup
- '99 Ford F350 Crew Cab Dually P/U
- '12 Ford F150 EXT Cab Pickup
- '78 Ford F150 Short Bed 4x4 P/U
- '67 Chevy C10 Pickup
- '01 Jeep Wrangler 4x4
- '03 Chevy Short Bed Pickup
- '78 Dodge 150 Pickup
- '97 Jeep Grand Cherokee 4x4
- '90 Chevrolet 4x4 Blazer
- '68 Dodge M601 Military Transporter
- '60 Lincoln Continental Conv.
- '56 Mercury Montclair Conv.
- '56 Mercury Montclair Conv.
- '56 Mercury Montclair Phaeton
- '55 Mercury Montclair
- '50 Mercury 2-Door Sedan
- '62 Mercury Monterey Conv.
- '64 Ford T Bird Conv.
- '05 Lexus SC430 Coupe
- '55 Chevy Bel Air
- '55 Chevy Bel Air
- '55 Chevy 2-Door
- '29 Essex "Super Six"
- '52 Chevy Deluxe 2-Door HT
- '30 Ford Model A w/ rumble seat
- '27 Ford Model T Touring Car
- '26 Ford Model T Doctor's Coupe
- '26 Ford Model T Touring Car
- '29 Ford Model A Car
- '29 Ford "T Bucket"
- '26 Franklin Car
- '51 Ford 2-Door
- '56 Ford Crown Victoria
- '41 Oldsmobile Hydromatic
- '54 Hudson Hornet
- '74 Mercury Monterey
- '52 Plymouth Cranbrook
- '79 Mercury Cougar XR7
- '67 Ford Galaxy 500 Conv.
- '97 Ford Thunderbird Limited
- '67 Lincoln Conv.
- '49 Plymouth Special Deluxe
- '57 Ford Carryall
- '70 Cadillac Hearse
- '78 Datsun/Ferrari 250 GTO
- '36 Chevy 2-Door Standard
- '73 Chevy Monte Carlo
- '71 VW Conv.
- '61 Sunbeam Conv.
- '50 Morris Minor Car
- '89 Cadillac Allante Conv.
- '94 Chevy Impala Super Sport
- '08 Saturn Sky Conv.
- '04 Ford T Bird
- '94 Buick Park Avenue
- '83 Chrysler E Class
- '59 Chrysler New Yorker
- '84 Olds Delta 88
- '91 Chrysler Lebaron Conv.
- '93 Chrysler Lebaron Conv.
- '88 Pontiac Fiero GT
- '96 Chevy Impala Super Sport
- '79 Mercedes
- '81 Mercedes
- '85 Mercedes
- '88 Lincoln Mark VII
- '70 Mercury Marquis Show Car
- '71 Olds Ninety-Eight
- '78 Lincoln Town Car
- '88 GMC Vandura Van
- '08 Cadillac Deville
- '07 Dodge Caravan
- '99 Cadillac Sedan Deville
- '58 Edsel Pacer
- '60 Edsel Ranger
- '58 Edsel Ranger
- '58 Edsel Ranger
- '00 Chevy Tahoe 4-Door
- '03 Buick Park Avenue
- '02 Mitsubishi 3000GT
- '73 Buick Centurion Conv.
- '79 Olds Cutlass 2-Door
- '68 MG MGB GT
- '65 MG Conv.
- '65 MG Conv.
- '02 Ford Winstar
- '06 BMW 4 door - Nice
- '69 Chevy El Camino
- '47 Ford Coupe
- '00 Harley Davidson - low rider, 3k mi.
- '07 Harley Davidson - Softail, 6k mi.
- '07 Harley Davidson - FXDWG
- '04 Harley Davidson - Softail, 8k mi.
- '01 Harley Davidson - Fatboy
- '08 Harley Davidson - Knightster, 2k mi.
- '55 Harley Davidson - 7200 Sportster
- '00 Harley Davidson - FXDWG Dyna
- '92 Harley Davidson - FXDC Dyna
- '08 Harley Davidson - Ultra Classic
- '07 Harley Davidson - Ultra Classic
- '05 Harley Davidson - Softail
- '72 Norton 750 Commando - Wow!
- '68 BSA Cafe Racer 650 - Rare!
- '07 Kawasaki LT 900
- '05 Honda VTX 1300 Retro
- '06 Pioneer 250cc
- Kawasaki 900
- (2) '85 Honda CB125
- '04 Custom Special
- '03 Honda CBR 600 F2
- '98 Suzuki 800 Intruder
- '07 Suzuki DR 650 Dirt Bike
- '05 Big Dog Motorcycle
- '67 Honda Dream
- '07 Yamaha Majesty Scooter
- '11 Yamaha Raptor ATV
- '09 Polaris Razor Side-by-Side
- JD 850i Gator - like new
- '16 Look 24' Enclosed Car Hauling Trlr.
- '15 Stealth 24' Enc. Car Hauling Trlr.
- '13 Forest River Enc. Car Hauling Trlr.
- '07 Enclosed Car Hauling Trlr.
- '01 Haulmark 26' Car Hauling Trlr.
- '00 Continental Enc. Car Hauling Trlr.
- '93 International Multi Car Hauling Trlr.
- '00 Kaufman Car Hauling Trlr.
- Numerous Open Car Haulers
- '04 Alpha Gold Class A Motorhome
- '00 Admiral Rambler Motorhome
- '05 Cherokee 5th Wheel Camper
- '06 "Little Guy" Retro Trlr.

Also Selling
Local retired fire trucks, Suzuki 660 Mini Truck w/ bed & 4x4, Cushman 3-wheeled vehicle w/ 2-cyl engine, 1907 John Deere Surrey w/ original brass tag, child-sized gas operated vintage car, vintage Northway snowmobile, competition racing go cart w/ wind deflectors. Select memorabilia including authentic all metal real deal 59 Chevy El Camino rear clip made into a man cave sofa, Snap On rolling tool cabinet "Dale Earnhardt" Series, Large NOS Coca Cola Metal Sign, (2) Coca Cola Button Signs, restored vintage gas pumps from repeat consignors, a lighted Jeep dealership sign and a lighted Dodge dealership sign.

LARGEST NO RESERVE COLLECTOR CAR AUCTION HELD "ANYWHERE" IN THE MIDWEST!

SULLIVAN AUCTIONEERS, LLC • 217-847-2160 • WWW.SULLIVANAUCIONEERS.COM • IL LICENSE #444000107