



ANNUAL SPRING FARM MACHINERY CONSIGNMENT AUCTION

Saturday, April 4th • 9:30 AM

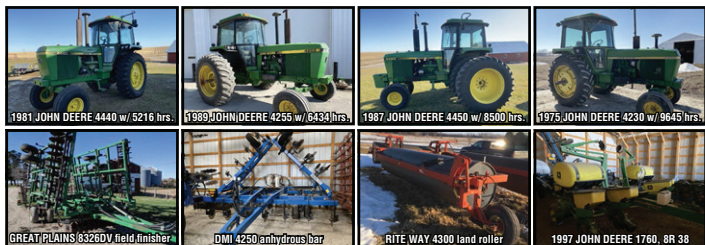
Tama Co. Fairgrounds, 1217 175th St. • Gladbrook, IA

We will continue to consign items all week until NOON on Friday. Call 319-269-4024, 641-485-2712, or 641-750-3057. Just a reminder this salebill was created nearly 3 weeks before the sale. Please go to spankyandsonsauction.com to get more details & see many pictures as they are updated. We are honored to bring to auction a complete line of equipment on behalf of the retirement of Dick Palmer, Carol "Pinky" Doak & Don Ryan and the Estate of Roger Wacha.

We will be running 2 rings starting with hayrack items at 9:30 sharp.

Machinery will begin at 11:00 AM. Bid LIVE or ONLINE.

To bid online go to spankyandsonsauction.com



DICK PALMER RETIREMENT DISBURSEMENT

'81 JD4440 5216 hr, quad range, 3 remotes, 3 pt; '87 JD4450 w/duals 8500 hr, powershift, dual remote, 3 pt, 8 suitcase weights; '64 JD4020WF w/ Hiniker cab synch row, 3 front slab weights, dual remotes; JD7000 8-row planter w/Kelderman fold; JD980 24 ft field cultivator.

TRACTORS & MACHINERY

'89 JD4255 w/cab 6434 hrs – 1 owner, 2 remotes, wheel wts; '75 JD4230 w/cab 9645 hrs, 1 owner, 2 remotes, wheel wts; '65 JD4020 WF w/cab 6103 hrs, 2 remotes, 3 pt quick hitch, slab front wts; JD MoCo 535 super clean; JD2020; JD5225 w/542 loader; AC D15; AC WD w/loader; '90 Ford 7710 II FWA 3498 hrs, 2nd owner; IH 560 WF w/dual loader, 4064 hrs; DMI 4250 anhydrous bar 15-shank; Landoll vertical tillage 7431-33; JD1760 8R wide Conservation planter w/MaxEmergePlus VacuMeter LIKE NEW 2000 acres; JD7000 6R w/liquid fertilizer, corn & bean units; JD235 Disk; Rite-Way 4300 land roller; Unverferth 1225 rolling harrow 26 ft; Great Plains 8326DV; AC little round baler w/white top; Asgrow Friesen Bulk Express seed tender w/Digi-Star scale; Knight 2300 reel auger feed wagon w/scale; Ashland 130 dirt scraper; '05 Kinze 3600 16-31 planter; (2) Heider wooden box wagons; NH256 side rake; NH258 side rake; JD14 cultivator; JD MX7 7 ft rotary mower; JD 3X plow; Stanhoist wagon; 6-place bale trailer; Wilmar fertilizer buggy; JD34 spreader; JD1065 barge wagon; Barge wagon on JD gear; DMI BigLittle D320 gravity flow; Dakon 250 on Hiniker gear; 500 gal dsl barrel on cart; 6-bale inline trailer NEW; Gehl 325 manure spreader; (2) 7X12 Stanhoist barge boxes w/silage endgates.

VEHICLES, TRAILERS & OTHER EQUIP

'99 Chevy 2500 w/Meyer plow 73047 miles; '05 Jeep Wrangler; '03 Ford F450 dually 2WD w/Texas Hauler flatbed dsl, new rubber, auto; '99 Sterling Daycab w/wet kit M11 Cummins 10-spd; '06 Dodge 1500 4x4 4-dr; '98 Diamond D 7X20 livestock trailer; '02 Chilton Snow trailer 20 ft; ForMost working chute on wheels w/palpation cage; JD zero turn rider mower w/48" deck; Utility trailer w/rear fold up ramp.

WE WILL CONDUCT AUCTION EVEN IF INTERNET MALFUNCTIONS.

Terms for LIVE auction bidders: We accept Credit Cards or Cash or good check w/photo ID.

Terms for ONLINE auction bidders: are posted online at spankyandsonsauction.com
Online bidding powered by Tractor House EquipmentFacts.

ALL product must be removed from the auction site no later than April 25th. All announcements on day of sale take precedent over all written material. Lunch on site in support of our local 4H Wolfcreek Whirlwids Club.

**Spanky & Sons
Auction**



David "Spanky" Boldt, Auctioneer

319-269-4024

Jerry McCoy

641-750-3057

www.spankyandsonsauction.com

