

No Reserve - Timed Online RETIREMENT AUCTION

MONDAY,
APRIL 10TH
@ 10:00 AM CST

This family has been in the bridge building business for over 50 years and you'll find their equipment has been well maintained and is ready to go to work for you!

EQUIPMENT INSPECTION: FRI., APRIL 7TH • 9:00 AM - 3:00 PM CST

LOCATED: BLOOMFIELD BRIDGE & CULVERT | 24007 ORANGE TRAIL | BLOOMFIELD, IA 52537

Dozer

- 2006 Cat D6RXW Series III dozer, EROPS w/ air & heat, limb risers, 30in. pads, 12ft. tilt blade, 9,000 hrs., SN CAT00D6RLMRT00207

Compactors

- Bomag BW 142PD compactor, OROPS, w/ canopy, Deutz engine, hydro trans., 56in. padfoot drum w/ vibrator, 60in. blade, 12.4-24 tires, 6,060 hrs., SN 101510500243
- American 48in. double drum sheep's foot compactor, pull type, rear hitch

Excavators

- 2004 Cat 322 CL excavator, 32in. pads, 12ft. stick, 36in. hoe bucket, 6,470 hrs., SN CAT0322CKBKJ00519, one owner
- 1997 Komatsu PC220LC-6 excavator, Cummins engine, 32in. pads, 36in. bucket, 8,300 hrs., SN A82284
- 1994 Komatsu PC220LC-6 excavator, Komatsu engine, SN A80331
- 48in. excavator bucket tooth cover

Wheel Loader

- Cat 930 wheel loader, enclosed cab, 96in. material bucket, quick detach, 17.5-25 tires, showing 8,597 hrs., SN41K11909
- Selling separate 44in. pallet forks off of Cat 930

Cranes & Attachments

- P&H Omega 4WD rough terrain crane, diesel engine, 70ft. boom, outriggers, 20.5-25 tires, showing 9,600 hrs., SN 44045
- American 4250 40 ton track crane, GM diesel engine, 32in. pads, 80ft. boom, SN GS10214
- American 106 5299C 50 ton track crane, Cummins 6.7L engine, 36in. pads, 120ft. boom, SN GS18757W, Engine SN 73170568
- American 4250 40 ton track crane, Cummins diesel engine, 36in. pads, 80ft. boom, SN GS11537
- (3) GAR-BRO Equipment 4600lb ¼ yard crane lay down concrete buckets
- (2) 40in. crane drag buckets,
- Owen 28in. crane clamshell bucket
- Crane ½ yard hopper style concrete bucket
- Link Belt 98 60ft. boom only

Semi's

- 1999 Peterbilt 379 day cab semi, CAT C12 engine, 15 spd. trans, twin screw, air ride, air lift axle, air slide 5th wheel, Merritt aluminum headache rack, 11R24.5 rear tires & 8 aluminum wheels, 285/65R/22.5 front tires & aluminum wheels, showing 647,229 miles, VIN 1XP-5DU9X-6-XD456121
- 1985 Mack RW600 Superliner semi, 36in. sleeper, Mack engine, 13 spd. trans, twin screw, Mack rear end w/ camel back suspension, aluminum headache rack, 11R24R22.5 rear tires & steel wheels, 11R24.5 front tires & aluminum wheel, showing 222,991 miles, VIN 1M2AY04Y2FM001211, One Owner

Trucks

- 1999 Kenworth W900 dump truck, CAT C12 engine, 10 spd. trans, twin screw, air ride, air brakes, 11R24.5 rear tires & steel wheels, 385/65R22.5 front tires & aluminum wheels, sells complete w/16ft. contractors dump box, showing 648,830 miles, VIN 1NKWLU9X2XR815233
- 2000 Ford F650 Super Duty truck, CAT diesel engine, 7spd. trans, spring ride, air brakes, wet kit, single axle, sells complete with Knapheide 18ft. steel flatbed, hoist, 10R22.5 tires, showing 130,557 miles, VIN 3FDWF65A7YMA15287
- 2004 Chevrolet 3500 4wd pickup, dual rear wheels, crew cab, 8.1L gas engine, auto trans, 8ft. bed, fully equipped w/ leather interior, gooseneck ball hitch, 259,993 miles, VIN 1GCJK33GX4F240815, One Owner

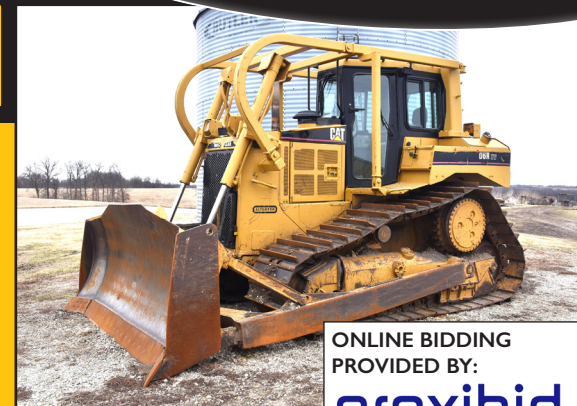
Trailers

- 2004 Trail King Advantage Series 55 ton 53ft. RGN trailer, triple axle, 26ft. well, self-contained hyd. system w/ Honda gas engine, outriggers, 255/70R22.5 tires, VIN 1TKJ053384B125466
- Selling separate 2017 Trail King TKFA1 air tail axle off of 2004 Trail King RGN, VIN TTKR00513JM085430
- 1997 Lufkin Paymaster 102in. x 53ft. flatbed trailer, 10ft. top deck, spread axle, air ride, 2 side toolboxes, 255/70R22.5 tires, VIN 1L01B5326V1125967
- 1980 Aztec 96in. x 42ft. flatbed trailer, spring ride, 24.5 tires, VIN 63116
- 1974 Daco 96in. x 42ft. flatbed trailer, spring ride, VIN 1332
- 2000 Kiefer 1000 Series, 102in. x 24ft. flatbed trailer, gooseneck hitch, 10,000lb tandem axles, (2) hide away ramps, 16in. tires, VIN 1DVDF2421YA005932
- 1999 Interstate 7ft. x 20ft. enclosed vee-nose trailer, tandem axle, cargo doors, 15in. tires, VIN 1UK500J29X1029258
- 1995 United Express 7ft. x 22ft. enclosed trailer, tandem axle, cargo doors, 15in. tires, VIN 48B500L24T1019769

Business Support Items

- 2021 Miller Bobcat 260 portable gas welder/ generator, 300 hours, SN 5102121343
- Atlas XAS 90 185CFM portable air compressor, Deutz diesel engine
- 100 gallon pickup fuel tank w/ GPI M-3025 12V pump
- GM Diesel Power Unit w/ twin disc clutch
- CH&E Model 4404 water pump, Wisconsin engine, SN 4404P83
- Danuser F8 3pt. post hole digger, 12in. & 16in. bits, 10in. extension, 540 PTO, SN069923
- 1500 gallon poly flat bottom storage tank
- Magic Screed Concrete screed, Honda GX35 4 Stroke engine, 8ft. & 10ft. heads
- Scotts speedy green 1000 walk behind yard spreader
- Kelly Duramfg Concrete screed, Honda GX 160 gas engine
- Shop built 32in. x 50in. rolling welding table
- Lincoln Wire-Matic 255 wire welder, less tank
- Lincoln AC-225-S Arc Welder
- Miller Spectrum 625 Xtream Plasma cutter, in case
- Chevron Rando HD 32 55 gal. barrel on stand
- Sokkia DT500A Electronic transit
- United Industrial 10 Ton Porta Power, model 49-PP10
- Large chain hoist
- (3) Multiquip 3in. trash pumps w/ Honda GX240 engines
- Multiquip 3600 generator, Honda 8.0 gas engine
- Mikasa plate compactor w/ Honda GX160 engine
- (12+) Concrete vibrators of various brands
- (2) Industrial torch outfits, no tanks
- Craftsman commercial bench grinder on stand
- Craftsman #15 ½in. drill press
- Blackhawk MC-11 cherry picker
- Indy automotive 5 parts washer
- Milwaukee 14in. cut-off saw
- Snap-on creeper
- North Shore 5/8in. bander & banding tool
- Beam Clamps
- 16ft. aluminum extension ladder
- Large quantity of wooden concrete bridge forms and other misc. lumber including 2in. x 6in. & plywood of various lengths.
- Pallet of misc. discharge hose
- Selection of barricades & traffic cones
- Selection of log chains & binders
- Quantity of nylon straps & lift straps
- LARGE selection of other tools and business support items!

**LOAD OUT:
TUES., APRIL 11
& WED., APRIL 12
9 AM - 3 PM CST**



ONLINE BIDDING
PROVIDED BY:
proxibid.



BLOOMFIELD BRIDGE & CULVERT

DARLENE GARRETT | DONALD GARRETT | DEBBIE GRAVETT

EQUIPMENT QUESTIONS:
DONALD GARRETT (641) 208-0463

Auction Representatives: John Probasco (641) 856-7355 &
Joey Croy (217) 617-0109

MERIT AUCTIONS
"Specializing in Farm Real Estate & Ag Equipment"

4502 Avenue O | Ft. Madison, IA 52627

319-405-0031 | 833.273.9300

WWW.MERITAUCTIONS.COM

*Additional
Photos Online!*