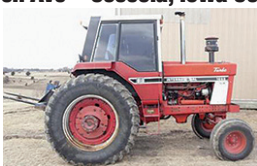


ESTATE AUCTION

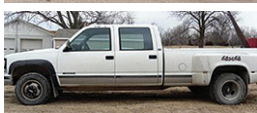
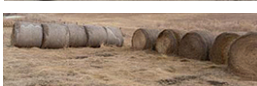
GAIL HEMBRY ESTATE ~ OSCEOLA, IA
SATURDAY, APRIL 19, 2014 ~ 10:00 A.M.

LOCATION ~ 1401 Warren Ave • Osceola, Iowa 50213

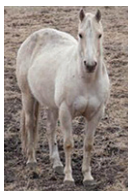
TRACTORS ~ LOADERS: Int'l 1086 6538 hrs, 75% rubber, 18.4x38 rear, 10.00-16 front, 2 hyd outlets, 540-1000 PTO, SN: 2610177U011866; White 2-85 new rubber all-round, 2 hyd outlets, 540-PTO only, approx 8500 hrs; A 26 Westendorf loader w/bucket & bale spear; 18.4x34 tractor duals; 18.4x38 tractor duals; 18.4x34 tractor chains.



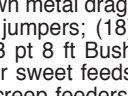
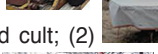
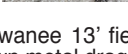
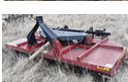
TRUCKS ~ STABBER: 1991 Dodge Power Wagon 250 w/Cummins 5 spd man trans, 4x4, brand new rear tires, lockout hubs, air ride system, 180,000 miles; 2003 Chevy Duramax, dsl, 2500HD, good tires, 4x4, heat, leather seats, 170,000 miles; 1993 Chevy 3500 Dual 454 motor, auto trans, 4x4, no rust, clean interior, AM/FM radio, A/C, 190,000 miles; Cox HYD single pt bale stabber.



HAY ~ HORSE: (77) net wrapped hay bales (this years hay); (26) twine wrapped bales (this years hay); 13 yr old Palomino riding horse; New Simco 13" youth saddle; Hereford saddle.



IMPLEMENTS ~ TOOLS: (2) 3 pt bale stabbers; seeder wagon 26" wide box; Yardman lawnmower 16 1/2HP, 46" deck; JD 2R horse drawn planter in working cond; continental posthole digger; barge box wagon w/6T wind power gear; sm torch set; calf puller; 2 cat 2 fast hitchers; horse wagon tongues; Big Ox 3 pt blade 8 ft; JD Harrow 2 section; calf hauler; Kewanee wagon gear; horse drawn hayrack on steel, metal ground packer; (3) metal hog huts; Kewanee 13' field cult; (2) horse drawn sleds on metal frames; horse drawn metal drag; 10 ft Howse brush mover 10 ft HD w/stump jumpers; (18) corral panels on carrier; (2) wire corn cribs; 3 pt 8 ft Bush Hog; (2) hayrack; JD bale un-roller 3 pt; super sweet feeds creep feeder; people hauler; (2) single sided creep feeders; (6) bale rings; (2) mineral feeders; Cox double sided creep feeder; Cory gravity flow 8 ft Kewanee gear w/cover; Kuhn GMD 700 disk mower; metal round pen; Palco working chute w/palpation gate; (2) metal feed bunks; plastic bottom feed bunk; (2) tire feed bunk; horse halters & bridals; neck yolk; double tree; feed wagon w/JD gear; (2) feed wagons w/cover; H&S wheel rake 12 wheel w/center kicker, high capacity; horse drawn buggy; horse sulky 2 btm plow; Int'l 45, 26' field cult w/walking tandems; pipe wrenches; wrench sets; pitch forks; shovels & misc tool; LOTS of hand tools; pitchforks; saws; ladders; etc; lots of hayrack misc.



Terms of Sale: Nothing removed unless settled for w/the cashier. Cash or good check only. All announcements made sale date take precedence over any & all printed material. Many items still to be unpacked on day of sale. **Restrooms & food on property** Not responsible for theft or accidents.

GAIL HEMBRY ESTATE AUCTION

WEBB AUCTION SERVICE

JEFF WEBB, AUCTIONEER ~ PHONE: 641-414-3000

DYLAN WEBB ~ 641-414-1025