

# ABSOLUTE DALLAS COUNTY FARMLAND AUCTION

OFFERED  
IN TWO  
TRACTS

12AC±  
FARMLAND

1.5AC±  
WITH HOUSE

OPEN HOUSE

SAT, MAY 20  
10AM-12PM

15148 Old Hwy. 6  
Redfield, Iowa 50233

AUCTION TIME & LOCATION:

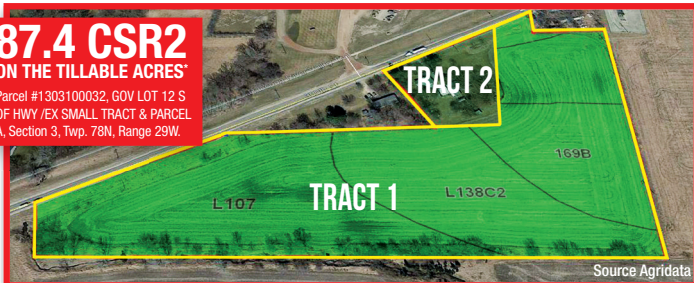
## THURSDAY, MAY 25 • 10AM

AMERICAN LEGION • 1116 THOMAS STREET • REDFIELD, IA 50233

**87.4 CSR2**

ON THE TILLABLE ACRES\*

Parcel #1303100032, GOV LOT 12 S  
OF HWY JEX SMALL TRACT & PARCEL  
A, Section 3, Twp. 78N, Range 29W.



**DAVID WHITAKER**  
Auctioneer/Broker  
515-460-8585



Whitaker Marketing Group  
AUCTIONS & REAL ESTATE

More details at:

**WMGAUCTION.COM**