

Public

Auction

"We Sell it the Day You Need it Sold!"

Thursday, May 19th, 2016 • 5:30 pm

1002 Grove St • Adel, IA

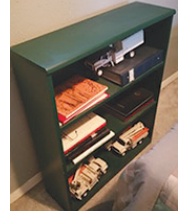
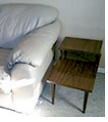
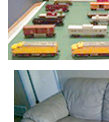
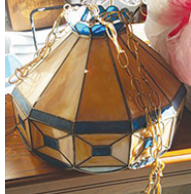
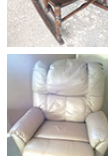
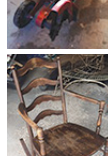
Just off Hwy 169 (Nile Kinnick Dr.)



- *2002 Grand Prix 4 door w/ leather interior approx. 147,000 miles
- *2009 Kawasaki Terex, new motor w/approx 150 hrs, new tires, new 2500lb winch, approx 3000 miles on the machine itself, hard cab & soft cab
- *5'x8' trailer w/ fold down ramp

Tools and Households:

Bicycles, leather recliner, Craftsman gas blower, garden tools
 Yard machine gas weed eater, hose reel, painting ladder
 Wheel barrow, 40 landscaping bricks, Craftsman gas edger
 Charbroil stainless steel 3 burner grill with side burner
 Snapper 5hp 20" snow blower, Whirlpool refrigerator
 Leaded glass hanging lamp, Aerodyne exercise bike
 3 steel shelves, Rubbermaid drawer set, antique plant stand
 1952 antique Lionel train set w/ 4 locomotives, approx 15 cars,
 track & several plastic buildings
 Antique rocking chair, antique Radio Flyer wagon, end tables
 4 drawer Hon file cabinet, 2 Longaberger baskets
 3pc matching leather set, full sized bed, roll top desk
 Dining room table w/ 4 chairs, dining room hutch
 Leather couch, misc. kitchen items, many other misc items
 Trampoline w/ safety net & side pads, dog kennel, dog bed
 Dog box - insulated, 2 dog, waterproof top lid, lock on top
 white aluminum clad



Shirley Hopewell, Seller

Daugherty Auction & Real Estate Services, LLC.

Chad Daugherty, Kelly Daugherty ~ Auctioneers

416 Greene St. Adel, IA (515) 993-4159 ~ d_auction@hotmail.com

See Us on the Web at www.daughertyauction.com