

Jefferson County Land
AUCTION

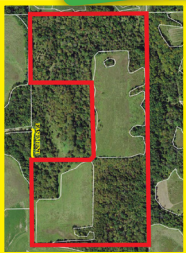
THURS, MAY 26, 2016 | 10AM

AUCTION HELD AT STEFFES GROUP. Land located 2 miles north of **LOCKRIDGE, IA** on Vetch Blvd, then ½ mile east on 195th St., then 1 mile north on Walnut Ave.

65 Taxable Acres
Hay & Timber Ground

1 TRACT

If you are looking for a secluded hunting or recreational getaway, then this may be the tract of land for you. Located down a dead end road is 65 acres that has 24.21 acres tillable with a CSR2 rating of 52.8. The tillable ground has been used as hay ground. Balance of the land is timber with no buildings on this property. Located in Section 14, Lockridge Township, Jefferson County, Iowa.



WATERHOUSE FAMILY

William R. Jahn, Jr. – Attorney

For details contact Lynn Richard at Steffes,
319.385.2000 or by cell 319.931.9090



Steffes Group, Inc. 605 E Winfield Ave, Mt. Pleasant, IA
Steffes Group, Inc. | 319.385.2000 | SteffesGroup.com