

Country Moving Auction

623 Hwy. F, Jamesport, MO 64640

9:30 a.m.
Saturday,
May 29, 2021

Since we have sold our farm & are moving out of state the following will sell to the highest bidder w/NO Reserve!

Directions: From Jamesport, Mo 4 way stop, go East on F Hwy for approx. 5 mi to auction site. Follow Auction signs on sale day.



Tractor & Trailers & Lawn Mower

J.D. GT model 275 riding mower hydro drive & 17 HP Kawasaki Engine; Massey Ferguson model #50 wide front w/gas engine 6445 hrs select spd may need a tune up; 2-3pt hay spears; 3pt tractor rear 6' blade; dump bed yard trailer; 3pt draw bar; 3pt 5' brush cutter bad gear box; Bonanza stock trailer 20' Goose Neck double axle w/center dividing gate (a real nice & good trailer); carry on flat bed trailer 12' long 80" wide 12" metal sides single axle w/ramp gate (a real nice trailer) 4-4wheeler tires; yard roller.

Scrap Iron & Metal

Scrap barn tin; 4 riding lawn mowers for parts; 3 LP gas grills for parts; old woven wire; several air compressors need work or for parts.

Livestock Equipment & Misc

Metal Bucking barrel; 7 cattle panels 16' long; some new rolls barb wire; several used rolls barb wire; 3 or 4 green corral panels 8' long; Poly 60 gal oval water tank; 3 Poly oval water tanks; 1 Rubbermaid oval water tank approx. 50 gallons; 1 sm 25 gal Poly water tank; approx. 31 Tee Posts 6' long; 3 riding horse saddles 1 is a Y; 3-saddle saddle rack; horse blanket; saddle bags; galv 150 gal round water tank; solar charging fence; Alum single saddle stand.

Shop Tools & Elec Tools

Plastic sawhorses; alum 2 wheel dolly; Kobalt SS 6 drawer tool cabinet on rollers; Ryobi 10" table saw bench top model; HD iron shop table; Kobalt wood chop saw; STIHL 290 chainsaw; air bubble; Clarke 130 EN mig welder w/leads; 6" insulated SS stove pipe; misc chains; Porter Cable elec hand plainer; 16' alum ext. ladder; alum loading folding ramps; air paint spray gun; Hydro hand jack; wheel barrow

Antique - Collectibles - Primitives

1 horse drawn cultivator for yard décor; Amish open buggy for yard décor; Buddy L metal dump truck 40's era; Buddy L metal power road grader 40's era; Tonka metal car hauler tractor & trailer; Texaco metal gas tanker tractor & trailer; white metal wrecker truck all in excellent shape! Walnut child's church bench; several quilts; Lionell metal train cars; log hook; child sled; metal HD Napa Auto adv sign; crosscut saw; Horseshoe chair (very nice) old white wicker child's rocker; youth mountain bicycle; Sears & Roebuck sport fisher 5HP out board motor; 10 gal cream can; single horse harness & collar; yard gate; flat top trunk; old Barbie doll set.

Special Interest Items & Misc.

2 large collapsible dog kennels; Pioneer vintage huge stereo system & speakers; wave runner trailer (no title); Vogel Zang 6' commercial smoker on stand; 300 gal fuel tank w/stand; 2 push lawn mowers; Verse front tine tiller (same as new); Statesman rear tine tiller; Alum handicap parking sign; 3 bales wheat straw; Fimco 4 wheeler 25 gal spray tank.

Rough Sawn Lumber

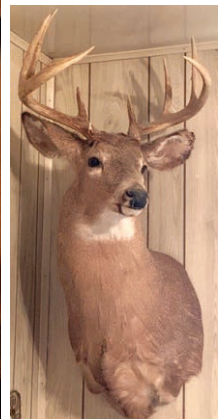
5 cedar slabs; 2.5" thick 8' long 15" wide; 2 cedar slab's 2.5" thick 6' long 15" wide; 1 cedar slab 2" thick 8' long 7" wide; 1 cedar slab 7' long 2" thick nice & clear; 2 cedar slabs 7' long 2" thick & 19" wide (very nice); 5 walnut 1"x6"x8' long; 4 walnut 1"x10"x8' long very clear lumber; 2"x6"x7' long walnut; 18 cedar 1"x4"x10'; a 1"x6"x8' walnut very clear; 1"x4"x8' cedar very clean; 5' cedar log; 6"x1"x8" cedar slab; cedar slab 12" wide 8' with lots of knots; 5' cedar log w/lots of knots; very lrg lot cedar limbs; 28-8' cedar poles 2" dia.; Pile misc. lumber; 34 pcs of red barn board lumber; 16 pcs red barn board trim; 15 psc 6"x1"x8" white barn board lumber; pile short walnut pcs lumber; 15 pcs 2"x6" CCA treated 16' long lumber; Juniper 4" thick 4' long coffee table top; 42"x 80" HD walnut door.

Household Appliances & Furniture

Quarter sawn oak china hutch 2 lrg & 2 sm doors; Whirlpool 2019 double door SS refrigerator has produce drawer & bottom freezer drawer has ice maker & water in door (same as new very nice); Marquette Cast Iron little gem nickel plated; Trim kitchen stove (must see pic on web) (very nice); Kenmore elec dryer; Maytag Centennial Elec Washer (both very nice); Kenmore upright freezer (works good); Sears refrigerator; apt size refrigerator; 4 poster 3 pc bedroom set; 110 window air conditioner; glass top table; HD steel clothes rack; wicker rocking chair; log pine round table; sm fancy table; Frigidaire apt size refrigerator; Tappan elec. kitchen range; butcher block table (very nice); cedar slab sofa table w/iron leg's 6' long; quarter sawn oak hall tree w/mirror (very nice); cedar slab coffee table & end table; oak lift up coffee table; a walnut cowboy TV stand (very unique); oak 3 pc king size bed (very nice); floral love seat; oak handmade sewing table; old roll top desk walnut in color; oak library 2 drawer table; Brother LS 1520 elec. sewing machine; 4 poster cedar log queen size bed w/real good mattress & box spring; child's table; quarter sawn oak cabinet; brown in color 2 pillow couch w/ recliners; lrg run of kitchen pots & pans cookware & misc. kitchen utensils & much more to numerous to list; 2 Oster deep fat fryers; oak dressing mirror.

Mounted Deer Heads Tanned Elk Hide

Tanned Elk hide; 2 shoulder mount whitetail deer mounts; 1 hang on deer hunting stand; some camping equipment; lrg lot deer antlers.



Auctioneer Note: This is only a partial listing. LOTS & LOTS more to numerous to list!

Owner: Steve & Lynn Jobe

See our website for more pictures at RoppAuctions.com

Food Catered By Power House Food Catering

conducted by

RoppAuctions

Auctioneers: Norman Ropp 660-247-1914, Richard Yoder

Any & all announcements made sale day take precedence of all printed material. Not responsible for theft of accidents.

We bring high \$\$\$ bidders to our sellers.

Porta Pots Available

