



LIVE ON-SITE CONSIGNMENT AUCTION

LOCATION: 100 INDUSTRIAL PARKWAY, GALLATIN 64640

SAT | JUNE 10 | 9AM

find us on facebook @ BS-Equipment-Auctions  join us on facebook!

PLEASE NOTE: PARTIAL LISTING -MORE TO ADD NEXT WEEK, OR CHECK ONLINE FOR THE UP TO DATE LISTINGS.

EXPECTING 650 PIECES, MANY INDIVIDUAL CONSIGNMENTS, RETIREMENT, ESTATES, SELLOUTS

Tractors/Loaders (Expecting 75-100 tractors)

JOHN DEERE
 JD 9520 4X4, duals, 5113hrs, C/H/A
 JD 8345R, MFWD, 4900hrs, duals, C/H/A
 JD 8295R, MFWD, 3596hrs, duals C/H/A
 JD 8270R, MFWD, 5300hrs, Duals, C/H/A
 JD 8330, MFWD, 8895hrs, duals, C/H/A
 JD 8430, MFWD, duals, 8640hrs, C/H/A
 JD 8770 4x4, 10315hrs, clean
 JD 8960, 4wd, 11336hrs C/H/A
 JD 8520, MFWD, 7700hrs, duals, ILS suspension, C/H/A
 JD 8310 MFWD, 7200hrs, duals, C/H/A
 JD 6125R, H340 loader, 4400hrs, 24 speed C/H/A
 JD 6125M, mfwd, 6781hrs, C/H/A
 JD 5085E, 520M loader, 992hrs C/H/A
 JD 7130, w/ H360ldr, C/H/A, 16spd, 2088hrs
 JD 7410 w/loader, C/H/A, 5400hrs
 JD 6400, 2wd, 4224hrs, C/H/A, Pto not working
 JD 5410 2wd, 7211hrs, C/H/A
 JD 5045D, 2wd, 158hrs, Canopy, clean
 JD 4630, 2wd, weights, duals, 8125hrs, C/H/A
 '90 JD 4055, 2wd, 3202 actual hrs, duals, C/H/A
 JD 4055, 2wd, 5153 hrs C/H/A
 JD 4250 2wd, 4200hrs, C/H/A
 JD 4240 w/loader, mfwd, C/H/A
 JD 4040, 2wd, 5124hrs, C/H/A
 JD 2950 w/720 loader, 3600hrs, C/H/A
 JD 2940 w/loader, OROPS
 JD 2020, WF
 JD 4010, gas, WF
 JD 950 w/loader, 2wd, 1350hrs
 JD 670, 1750hrs
CASE IH/INTERNATIONAL
 CIH MX285, mfwd, duals, 3435hrs
 CIH Magnum 250, mfwd, 4537hrs, C/H/A
 CIH MX255, MFWD, PS, duals, 7500hrs C/H/A
 CIH MX120 w/loader, mfwd, 8400hrs, C/H/A
 CIH DX40 w/loader, mfwd, 2226hrs, orops
 IH 4386, 30.5x32, 3 point
NEW HOLLAND/ FORD
 '15 NH T6.150 w/loader, mfwd, 2300hrs, C/H/A
 '15 NH T6.150 w/loader, mfwd, 2550hrs, C/H/A
 NH 5640 w/loader, 2wd, 5289hrs, C/H/A
 NH T6030, MFWD, LDR Ready, 7461hrs
 Ford TW35, Duals, 4490hrs,
KUBOTA/MASSEY FERGUSON/ MCCORMICK
 Kubota M7-152, mfwd, 230hrs, C/H/A
 Kubota M135X w/loader, mfwd, 2200hrs
 MF 8270, mfwd, duals, 4028hrs C/H/A
 MF 4707, w/ JD 931x Loader, 100hrs C/H/A
 McCormick MTX120, w/loader, mfwd, 7585hrs, C/H/A
WHITE/AGCO/ALLIS CHALMERS OTHER
 '18 Mahindra 8100, w/loader, mfwd, 268hrs, C/H/A
 Agco 5680, 2wd, 2204hrs
 Valtra 8350 w/loader, mfwd, C/H/A

Deutz DX120, 2wd, C/H/A
Other-Loaders
 JD H310 loader, unused
 JD 148 Loader
 Westendorf TA28 Loader, bale fork
 Westendorf TA28 loader, bucket
Combines/Headers/Harvest

(Stelzer Retirement)
 '14 Gleaner S77, one owner, only 500 engine hrs, 4wd, clean
 '11 Agco 9250 draper head, 30ft Agco 8r 30 corn head

CIH 2188 combine, 4wd
 CIH 1660 combine, 4wd
 CIH 2020 platform, 30ft, nice
 JD 220 platform
 JD 925 platform
 2- JD 343 corn heads
 Gleaner R52, 4152hrs, 4wd
 Gleaner R50, 2wd
Platforms/Draper
 Gleaner /Agco 9250 30' Draper
Construction
Excavators
 '22 Deere 35G, OROPS, 46hrs, thumb
 '22 Caterpillar 303.5CR, Erops, unused, thumb
 Caterpillar 312BL, Mech Thumb, 8025hrs

Skid Steers
 '19 Cat 249D, 1100hrs, open rops
 JD 259D, C/H/A, 1211hrs,
 Kubota SVL95-2S, 1500hrs, C/H/A
 '16 Kubota SVL95-2S, 2100hrs, C/H/A
 Deere 333G, 2391hrs, C/H/A
 Deere 325, 1764hrs, C/H/A
 Case TV380, C/H/A 2600hrs
 '14 Case SV300, C/H/A, 705hrs, C/H/A
 Case 450CT, 2421hrs, C/H/A
 Case 90xt, Hand controls, 900hrs
 Case SR210, 3426hrs, orops
 Case 445CT, aprox 2500hrs, C/H/A
 Case 430, OROPS
 Case 430 non runner
 Case 1845C, 2848hrs
 Case 1835, gas
 Takeuchi TL230II, C/H/A, 3104hrs
 Takeuchi TL230, C/H/A, 4265hrs
 Takeuchi TL140, 2200hrs, C/H/A
 Takeuchi TL8, mechanics special, needs turbo
 Gehl 5640, 2658hrs, OROPS
 NH LX865 skid steer, OROPS
 NH LS180 Skid Steer, OROPS
 '15 Bobcat S590, tires, 1330hrs, C/H/A
 '15 Bobcat T630, 2133hrs, C/H/A
 Bobcat 763, 2863hrs, Kubota diesel

Backhoes/Loaders
 '15 Caterpillar 420F IT, Backhoe, 3756hrs, 4 in 1
 Cat 420F IT, 6500hrs, 4x4, joystick controls, C/H/A
 '13 Case 580SN-WT, extend-a-hoe, enclosed cab, local machine
 Case 580, 2wd, 5712hrs, OROPS
Dozers
 Case 850C, angle blade, OROPS
 Komatsu D31A, 6 way blade
Other Construction
 Fiat Allis FR15B wheel loader, good rubber, C/H/A
 Cat 930 wheel loader, 8600hrs C/H/A
 Cat 620 self-propelled scraper, nice machine
 Case 321F wheel loader, QA, C/H/A
 Case 621B wheel loader, 4600hrs, new rubber, QA, clean, C/H/A
 Nissian 60 forklift, needs work
 Skytrak 4266, OS, 4x4, Good tires

Planters-Drills-Seed Tenders

Kinze 3000, 6-11, No till
 JD 7100 6R30 planter, 3pt
 White 6180 planter, 12R 30
 '12 Kinze 3800 ASD, 24-30
 '15 Kinze 3600 16/31
 '19 Kinze 3500, 8-15, no till
 Kinze 2600 12-23
 JD 7000 4r, NT, liquid fert, nice
 JD 7000 2row 3 point
Drills
 JD 750 drill
 Aitchison 3016C drill
 GP SS30 Drill, No till
 Great Plains , 30ft air seeder
 JD 1570 drill , 15in units
 JD 1520 drill, w/grass seed
 M&W Drill, 10ft
 JD 455, 25'
 Crust Buster 3400 DD 20x8
 Crust Buster DD22X8
 GP SS15
 IH 510, w/ grass
 IH 5100
 Tye 15' drill, w/grass seed
Seed Tenders
 '23 Killbros seedveyor 360, like new, scales
 Conveyall BTS290
 Meridian Titan II , 2 box
 Friesen 110 Seed Tender

Manure Spreaders/Applicators
 Rogator RG1100 dry spreader
 Terragator TG7300 floater, 1721hrs
 Rogator 664, 700gal, 80ft booms
 Stadium 80gal UTV sprayer
 Hardi SP750 Sprayer
 150 Gallon, 3 point
 Nurse Tank 750 gallon
 Several large poly tanks
Forage Equipment/Feeding Equipment
Grinder Mixers/Mills
 JD 3970 chopper
 JD 3960 chopper, 3RN head
 Artsway 500A Grinder
 NH 358, Grinder, Hay Table
 NH 355 Grinder
 JD 700 Grinder, drag
 NH 357 Grinder, w/ drag
 Several Grain O Vators
GRAIN CARTS/GRAIN HANDLING
 REM 2500HD grain vac
 Brent 1080, tarp
 Frontier GC1105, tarp
 Unverferth 9250 tarp, good rubber
 Several Gravity wagons, barge boxes, etc
 Westfield MK80-61

Hay Equipment
Balers/Mowers/Tedders/Rakes
Mowers
 JD 450 swather, self-propelled, 3600hrs, 16ft head
 Frontier DM1160, 3pt
 Vicon disc mower, 3pt
 Mahindra MDM9, 3pt
 Krone EZ Cut4013CV
 Kuhn GMD-3151TL, 3pt, low use
 Kuhn GMD-280, 3pt
 NH 6830
 2- JD 946
 CIH DC133 Moco, Like new
 CIH 8360 moco
 NH 456, 7' sickle
 NH 451, 7' sickle
 Reese 2400TL
 Ford 3pt sickle
 Rakes
 H&S Hy capacity rake, 18wheel
 CIH MX301 rake, 14 wheel
 Vermeer R2300
 Vermeer R23 Rake

JD 350 3pt rake
 Gehl 219 rake
 NH ProTed 3417
 M&W 10 wheel Hi Cap
 Tonuutti Wheel Rake -8 wheel
 NH 57 Rake, 3 point
 NH 258 rake, dolly wheels
Balers
 Agco 7110 in-line square baler
 JD 567 baler, twine/net
 JD 567 baler, twine/net, kicker, 8500 bales
 JD 530
 JD 430
 Hesston 560 Round Baler
 Hesston 5456A baler
 NH RB460, net
 NH BR780 baler

3 Point Equipment, Misc Equipment
 JD 5btm plow
 Fast-hitch brush cutter and rear blade
 Several 3 point blades
 Several 3 point brush cutters-5-6-7ft
Brush Cutters/ Finish Mower
 Bushwacker MD144, 12ft batwing, like new
 Rhino SE15 brush cutter
 Rhino 15ft
 JD HX15, 15ft
 JD MX10
 Landpride Ranger 12'
 Landpride F2784, 3pt
 Woods 10ft

Cattle Equipment
 Trailer with 12ft corral gates
 60 free standing panels
 50 hedge post
Disks/Vertical Tillage
 2- '12 Summers Supercoultter VT, 32ft
 '20 Case IH True Tandem 375, 26'
 CIH 340, 24'
 Salford 570RTS, 27ft
 JD 637, 25ft, 7in
 JD 630, 24ft, clean
 JD 630 27ft
 IH 496 disk
 IH 490 25ft, 7in
 IH 490 27.5 ft 9in
 AC HD CF 18' disk

Field Cultivators
 JD 2210, 34'
 CIH 4300, 28'
 JD 726- 28' finisher
 Sunflower 5135-42, 42'
 GP Disk-O-Vator Series VII
 GP 6324 mulch finisher
 GP 7553 cultivator, 53'
 IH 4600, 24'
 Wilrich 22'
 Krause 4100
 Kewanee 470, 30'
 IH 45, 26'
OTHER
 75 cubic ft mixer/blender
 Phoenix 3pt Harrow, 15'
 Degeleman dozer blade
 DR pull-type backhoe
 JD 1710 Disk Chisel

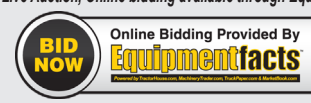
2-JD 400, 15' Rotary hoe
 3-40ft shipping containers, w/side doors
Vehicles/ATVS, LAWN Mowers
Grain Trucks/ Trailers
 '10 Ford F150, 4x4
 '08 Buick Enclave, 190,000 miles
 '04 Dodge 2500, gas, Butler bale bed
 '04 Chevy 3500, flatbed, Duramax, 4x4, 131,xxxmiles
 '05 Volvo Twin Screw, Day cab, DD12, 10 spd
 '04 Freightliner, - Detroit 60 series eng, 10 speed, single axle
 '17 IH twin screw, low miles, no bed
 '10 GMC 5500 Flat bed, Duramax, auto trans
 '88 Chevy 1 ton, 4x4, flatbed
 '94 Ford E350, Flatbed, Tool boxes, gas engine
 '81 Ford F800 Grain Truck, Gas, 5+2,
 '89 Ford F800 Grain Truck, Single axle, diesel
 5-older snowmobiles
Trailers
 New built HD skid steer trailer, pintle hitch
 '12 Triple B & J stock trailer, 14ft, bumper pull
 '22 Iron Bull GN Trailer, 12k axles, excellent shape, like new
 '18 Loadtrail, Hyd Dove, Hyd jack
 '02 Trail King Lowboy, Hyd dove
 '98 Timpte hopper trailer, 42'
 16' bumper hitch stock trailer
 '93 Hillsboro, 7x24, Stock Trailer, nice
 Chaparral Coachman Camper, 5th wheel
 8 bale trailer, gooseneck
ATV/UTV/BOAT/Mowers/Motorcycle
 '14 Harley Davidson, Heritage Soft tail, Black, 7682 miles
 2- Electric EZ-GO Golf carts
 JD Gator XUV825E, 721hrs
 Bad Boy zero turn, diesel
 Kubota ZD21 zero turn, 1334hrs
 JD 992 zero turn mower
 JD 500 riding lawn mower
 JD E140 riding lawn mower
 7-JD 652R Stand on mowers

Skidloader Attachments (All attachments are new and will sell with NO Reserve)- All attachments are Skid Steer Quick attach

OVER 150 ATTACHMENTS TO SELL
 JCT Brush cutters, post augers, grapples, sweepers
 Stout Brand, grapples , material buckets
 Lowe Post augers
 Tuff Ox Tree pullers, Container items, tool boxes, attachments, bathrooms, 40ft 4 bay container

Location: 1 mile west of Gallatin on Hwy 6, Gallatin Industrial Park

This is a Live Auction, Online bidding available through Equipmentfacts



ALL ITEMS MUST BE REMOVED FROM AUCTION YARD WITHIN 15 DAYS, NO EXCEPTIONS.

BandEquipmentSales.com | Office 660-663-3363 | Shay 660.605.0839 | Justin 660.605.2346

Terms: Cash, check w/proper ID. Nothing removed until settled for.

Not responsible for theft, accident or inadvertent errors in advertising. Statements made day of sale take precedence over printed material. Sale bill subject to change. Call for item availability.