

PUBLIC AUCTION OF COLLECTIBLES & TOYS

SUNDAY, JUNE 29TH, 2014 • 12:00 NOON

FAIRGROUNDS COMMUNITY BUILDING • WINTERSSET, IOWA

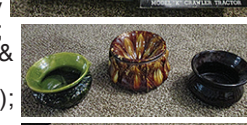
METAL & PORCELAIN SIGNS: First National Bank, Winterset; Copenhagen; Gargoyle; Mobil Oil; Chew Copenhagen; Skoal; Mail Pouch Tobacco large thermometer; American Legion Protect Our Children; St. Paul Lutheran Church; 2 round Mason signs; Evening Star Lodge #43; Snow Route; John Wayne Drive; No Parking Here to Alley; Winterset Order of the Eastern Star; Sinclair Credit Cards Honored; John Wayne Birthplace Home Center; No Animals in Park Area; Kiwanis International; Lions International; Highway 169-92 sign in Bridges of Madison County Movie prop; John Wayne Birthplace 1 Block East; and more.

TOYS: Wood Tabber Morse Steam Engine (works); Case 65HP Steam Engine; Charley McCarthy Puppet; 150 + Die Cast Toys...some w/metal tracks & some Limited Edition...most of them Caterpillar & most in boxes; Silver Edition Commemorative Tonka Truck in box; 4 Old Tonka Scrapers; Sev stamped steel toys; NAS-CAR items; Battery operated Giant Crane in box; Marx elec train; elec Race Car track & cars; elec football game; metal Honeymoon Express toy; Hop-a-Long Cassidy Advertising; Johnny West Buckboard w/Thunderbolt by Marx; Lone Ranger's horse Silver; Johnny West Covered Wagon in box; Custer & Sitting Bull dolls; and more.

MISCELLANEOUS COLLECTIBLES: Full-size Budweiser Racing Car hood; Bridgestone/Firestone thermometer; Old Santa Claus suit; Sev Big Little books; 25th Anniversary Winston Cup Matches; lots of Antique furniture parts; Sm oak display cabinet; Misc sm adv items; 1925 Madison County Map; Tobacco adv items...some from local stores; 10 City of Winterset Bonds... 1909-1984; 11 Madison County Atlases... 1908-1969; 1953 & 1954 WHS Basketball schedule; 12 metal & porcelain spittoons; 2-1945 Major League Baseball books; wooden Pioneer Brand Beef Jerky display; Foosball table; oak stick & ball spoon-carved parlor table; oil bottle; child's top; green Depression bowls; 2 Stoneware bowls; 3 lg Pyrex bowls; Graniteware; cast iron Griswold & Wagner skillets; Retro hanging light fixture; Metal Marble Bingo game; glass baby bottle; 1960 Boating & Trapping book; Jadeite Pitcher; Depression Water pitcher; Farm Service bowl; Earlham Co-op bowl; pie bird; Firestone Tennis racket; lg stoneware piggy bank; old gasoline road maps; Sev local & other metal adv thermometers; Lg 1934 Commercial Atlas; 1959 Adair County Atlas; marbles; Zig-Zag paper dispenser; Old Caterpillar Manuals; Case & other equip Manuals; and more.

SPECIAL MENTION: 1974 Harley Sportster (basket case...All There); Lots of Road King Harley parts.

TERMS OF SALE: ID is required to receive bid numbers. We accept cash or good checks. We are not responsible in the case of accident or theft. Thank You. Lunch by Diane & Donna



HARTMAN AUCTIONEERING

Steve Hartman 515-468-7857 • 515-462-4584

www.hartmanauctioneering.com