

Clark County

REAL ESTATE AUCTION

• TUESDAY, JULY 12, 2022 AT 10 AM •

**AUCTION LOCATION: THE CARE BUILDING
451 NORTH VINE STREET, KAHOKA, MO 63445**

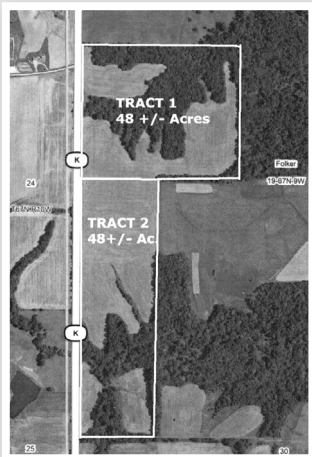
PROPERTY LOCATION: From Kahoka, Missouri take Highway 136 west 9.5 miles to Luray, MO, turn right on Highway K and go north 12 miles to the farm on the right.

96+/- ACRES TO BE OFFERED IN TWO TRACTS LOCATED IN TOWNSHIP 67N, RANGE 9W, SECTION 19 IN CLARK COUNTY MO

THE CLARK COUNTY FSA OFFICE
CALLS TO A TOTAL OF 98.63 ACRES
WITH 61.14 TILLABLE ACRES.

TRACT 1: consist of 48+/- acres with frontage and access directly off Highway K which runs along the entire length of the property. Tract One has lots of cropland with the balance being in mature timber.
TRACT 2: consist of 48+/- acres with frontage and access off Highway K which runs the entire length of the property. Tract Two is primarily open and in crop on the north end and with some mature timber on the south end.

**BOTH TRACTS OFFER SOME EXCELLENT
HUNTING AND RECREATIONAL
OPPORTUNITIES WITH CASH INCOME
FROM THE CROP LAND.**



This property has been owned by the same families since 1980 and has never been offered for public auction.

SELLERS: LARRY EHLMANN & RICHARD STOCKE

Visit wheelerauctions.com for more information!

Wheeler 
AUCTIONS & REAL ESTATE

23101 HWY. 24, PARIS, MO 65275 | 660-327-5890
WWW.WHEELERAUCTIONS.COM

For more information call
Charlie Nordwald | (636) 795-4552
Kirby Fecht | (217) 248-2906
www.wheelerauctions.com