

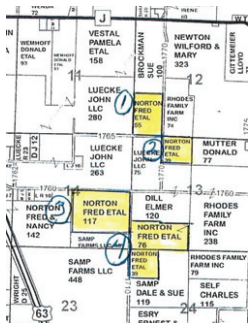
NORTON TRUSTS FARM LAND AUCTION

CAIRO-JACKSONVILLE, MO AREA

TUESDAY, SEPTEMBER 18, 2012 – 10AM

(ALSO SELLING A LINE OF LIGHT FARM EQUIPMENT ABOUT 11AM)

The Nancy N. Bowden Trust and the Fred & Nancy Norton Trust will sell at Public Auction the Norton Family Farm, located southeast of Jacksonville & northeast of Cairo in Randolph County, Missouri. This land was purchased by the parents of Norton family beginning in the 1950's & has been in the family since. All the land lies within Sections 12, 13, 14 and 24, Township 55N, Range 14W, Randolph County, Missouri. All tracts are highly tillable, level lying to gently rolling farm land. Auction held at farm. Follow signs from US 63 (north of Cairo & south of Jacksonville) about 3/4 mile east to farm on Co. Rd. 1760.



TRACT 1 – 55 ACRES, M/L, Section 12 – Nearly all tillable (FSA tillable acres 53.08) comprised mainly of Putnam and Mexico silt loam soils. Tract has gravel road frontage on south and east.

TRACT 2 – 39 ACRES, M/L, Section 13 – Nearly all tillable (FSA tillable acres totaling 37.61) comprised of mainly Mexico & Leonard silt loam soils. Tract has gravel road frontage on west.

TRACT 3 – 117 ACRES, M/L, Section 14 – Nearly all tillable (FSA tillable acres totaling 115.85) comprised mainly of Mexico, Keswick, Putnam & Leonard silt loam soils. Substantial tile & terrace plan recently executed on this tract. Improvements include an older, but livable, 3 bedroom home & two grain bins (10,000 bu. & 4,400 bu.) with fans. Tract has gravel road frontage on north & east.

TRACT 4 – 115 ACRES, M/L, Sections 13 & 24 – Highly tillable (FSA tillable acres totaling 92.43, including CRP land) comprised of Mexico, Keswick & Leonard silt loam soils. Tract lays level to gently rolling & has 21.3 acres in CRP thru 2021 paying \$2377 annually. Buyer to receive entire 2013 CRP payment.

Line of small farm equipment- Selling at 11 am

Visit www.landandauction.net for for terms & conditions and further details.

Walter S. Iman Auctioneer
660-281-0559

wally@landandauction.net

**COLDWELL
BANKER**

NORTH CENTRAL

Tom Kendrick
660-670-2678

Dave Atkinson
660-788-3333