

BUSINESS CLOSING AND COMMERCIAL PROPERTY AUCTION



Saturday, August 25, 2018 • 10 a.m.
309 W. Dallas St., Lenox, Iowa



PROPERTY/REAL ESTATE

Legal: Millers Sub Div LT10TR 150x150 NE Cor (PT of PGS CHG LT15) Corp Len Lenox

Property Description: A commercial steel framed 50'x70' metal shop building built in 1977. Building has 16' sidewalls, 2 -16'x13'6" overhead doors, 2 walk doors, 8" of reinforced concrete floor. Building is heated with a suspended gas forced air furnace. There is a 12'x16" elevated office area inside main entrance and above the counter and parts area. There is water and plumbing inside the building. Separate power meters for 110, 240 and 3 phase power access. Property is approx. one half acre in size. Property is selling as-is. No warranties or guarantees.

Auction Method: Property will be auctioned and sold to the highest bidder. Winning bidder will pay 10% down the day of auction and enter into a contract to purchase said real estate with balance due upon closing. Closing approx 45-60 days after auction. Engel/Maharry Law Office will handle all closing transactions/legal representation. Rod Maharry, Attorney. Todd Crill Auction is Auctioneer only. All verbal announcements day of auction take precedence over any verbal or written material. Not responsible in case of accidents.

METAL FABRICATION / WELDING MACHINERY / TOOLS

- Bridgeport Series I, 2 HP Milling Machine with digital readout, power traverse table, micro drop oil mister, Ser# J201062 Drive # 71061-2;
- Scotchman 65 Ton iron worker Model #6509 Ser# 4137M1090 3 phase 220V, Iron worker punching and additional tools on rolling stand;
- Miller Resistance Spot Welder, Model PSW-1020ATT Ser# KB096653, 220V, single phase;
- SouthBend 17" Turn-nado metal turning lathe 10' bed length with steady rest, Cat# CL170G Ser# 73GJ2316, 220, 3 phase;
- Rigid Model 535 Pipe Threader, Ser# 315974 115V on stand with additional tooling;
- Wells Model 8M metal band saw Ser# 16403;
- 6' metal roll with 6" rollers, 3 phase 220;
- Brilliant metal cut-off saw with stand model BDM33-7714, 110V;
- Miller Bobcat 225 portable welder/generator, 8500W Onan Performer 16HP Engine Ser# KK234192
- Lincoln Gas Powered DC Arc Welder Model #SA200F163, Ser# 572057;
- Linde Model V1 - 253 Wire Feed Welder Ser# B-74A05454 250 amp;
- Wilton Model Grit-Flex Multi-Tool Sander Model GF150, Ser# YR 9904088;
- Ohmstede Shape cutting machine, model# SC42 Ser# 918;
- New Little Giant Trip Hammer;
- Chicago Dreis & Krump press brake, 48" bed model #131 Ser# LW12654;
- Cincinnati 50 ton press brake, 10' bed, 4" stroke, No. 22399, 3 phase 240V (The E.A. Kinsey Co. Machinery, Cininatti/Indianapolis) Machine was under repair, very complete, many new parts;
- Cincinnati 1018 Shear No. 34356, capacity 1/4 mild steel, mechanical clutch, 3 phase 240V;
- Miller Constant Potential DC arc welder, model MP30E, Ser# HH008339 300 amp, 100% duty cycle;
- Thermal Dynamic - Thermal Arc Pak 7xR Plasma Cutting System Ser# M00214A1843 02, single phase 120 V;
- Miller Syncrowave 350 LX Factory reconditioned, Ser# LG141164L;
- Air-Co mini Arc 130;
- Lincoln Elec. SP-100;
- Lown Former 3' hand turn sheet metal roller; Elec Dynafire; Kenco Trip hammer for parts; unknown upright press for parts



ADDITIONAL SHOP ITEMS:

Trenton Anvil on stand; Black & Decker Industrial 8 gauge nibbler; Clipper #8 Lacer for belting; Commerical 30" Oscillating shop fan; Powermatic HD drill press; Craftsman drill press; air compressor; pedestal grinder; Waterloo Top/Bottom Tool Chest; Snap-On to include: open/box wrenches, punches, chisels, extractors, drill bits, plus more; Misc. socket sets; large selection of air tools; air hoses; ext. cords; log chain; shop vac; welding tables; shop vise; 2000 lb Dayton Job site tool box; (2) Hilti concrete hammer drills; Milwaukee drills; grinders; saws; Bostitch framing nailer; (2) Bostitch coil roofing nailers; Delta 14" band saw; soldering gun; portable sandblaster; heavy hyd. Porta power



FORKLIFT / HAND TRUCK / SHOP TRUCK

1985 Ford F-350 Truck with utility welding flat bed - NR; Clark 4 cyl. Gas fork lift, continental engine, two stage with forks, runs; Forklift boom; hyd. Grapple attachment for skid loader; Big Joe Model 10565 elec hand truck.



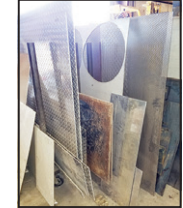
NOS STAINLESS STEEL / STEEL / NEW METAL PRODUCT / INVENTORY

Pallets of misc new flat steel; rack of auger flighting; 1000's of feet of stainless product to include rod, flat, angle, pipe; 1000's of feet reg. Steel product to include angle, flat iron, solid rod, square tubing; large shelving units complete with inventory to include nuts, bolts, hardware, misc. new product; very large assortments of stainless steel fittings; 20'+ 1/2 ton bridge crane cross beam



TRACTORS / ROAD GRADER / MISC.

Farmall B Tractor, NF good rubber, runs; Adams Motor Grader Model 201 Ser# 261 w/blade IH motor unit, said to run; Allis Chalmers 6G Crawler Loader, appears complete, non-running; Ariens Lawn Tractor; 2 other B Farmall carcass tractors; Case 300 NF tractor for parts; antique water wagon; buzz saws; saw mill; P&O 2 bottom plow; slip scraper on steel wheels; lots of steel wheels; commercial shelving.



Auctioneer Comments: Due to ongoing health battles, Larry and Sharon will be selling Weaver Welding and Fabrication Business and Real Estate. They have been in the business for many decades! Larry had the knowledge and equipment to weld or fabricate almost anything. This will be a huge auction of commercial equipment, tools, new metal product and the commercial Real Estate. Another all day event! Property and Large items sell at 1PM Hope to see you at the auction - Todd



Removal of large equipment will be the responsibility of the buyer

Weaver Welding and Fabrication Larry and Sharon Weaver - Owners

Auction conducted by Todd Crill Auctions, Creston, Iowa

Todd Crill, Auctioneer - 712-621-1453

Auctioneers: Matt Johnston • Nathan Ramsey

www.toddcrillauctions.com or follow us on facebook

PORTABLE RESTROOM AVAILABLE • LUNCH BY THE SWEET SIDE

Terms: Cash or good check. Mastercard and Visa credit cards welcome.

[proxibid www.proxibid.com/toddcrillauctions](http://proxibid.com/toddcrillauctions)

TODD CRILL

AUCTIONS
 Your Estate Auction Specialists

