

Public



Saturday, August 26, 2017

11:00 am

2191 M Ave. • Woodward, IA

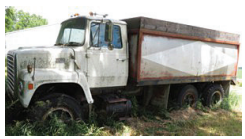
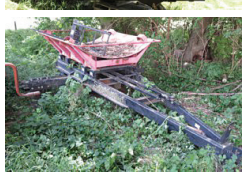
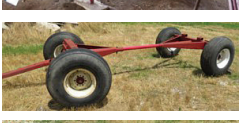
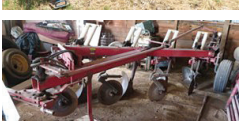
Auction

"We Sell it the Day You Need it Sold!"



**For questions please call:
Chuck Smeltzer 515-321-1510**

- *2013 JD 1750 planter 532.4 acres total, dry fertilizer 6 row x 30", finger pick-up, cast closing wheels no till, JD 350 monitor, w/corn & bean meters, insecticide
- *2013 Hardi Ranger 2000 sprayer 550 gal, 45' eagle booms HC2500 monitor, foam marker, vacuum pump
- *JD 7000 series saddle tanks, 200 gal each side (brand new)
- *2008 PJ tandem axle gooseneck 32' long, all new rubber 23,500lb rating
- *2008 Starlight tandem axle trailer 18', 10,000lb
- *1975 Ford LN-800 351 gas engine, titled, 73,000 miles
- *Case IH 1300 sickle bar mower (like new), 9' bar
- *2011 Farmall 40 w/ L350 loader (1 owner) 110 hours quick hitch, single outlet, 540 PTO, 17.5 x 24 tires
- *2000 JD 7610 1330 hours, (2nd owner), 4 front weights power shift, 3 hydraulics, 18/4/42, 540/1000 PTO
- *Kinze 1500 cultivator, new sweeps, single sweep no till
- *Frontier GM2072 finish mower 72" w/ floating hitch
- *Case 446 lawn tractor w/ blade, front mount PTO & mower deck
- *2010 Toreq 9000 scraper 10 yard (like new)
- *McCormick Farmall Super C
- *JD 3020 3587 hours
- *Buhler model 80 8" blade
- *IH 720 4 x 18" plow
- *DMI Tiger Mate 21' cultivator
- *New Holland 256 hay rake
- *New Holland 273 hayliner w/ thrower
- * 2 row cultivator for Super C
- *DMI gear model 866 w/ 14L x 16.1 SL
- King Kutter II tiller, Rhino 3pt blade light duty
- Troy Bilt 25hp zero turn 50" deck 200 hours
- Poly dump truck box w/ hoist, 6,000 gal water tank
- 2,500 gal water tank, 1,000 gal water tank
- (6) new Farmall wheel weights, water tank



Chuck Smeltzer, Seller

Daugherty Auction & Real Estate Services, LLC.

Chad Daugherty ~ Owner/Auctioneer
Kelly Daugherty ~ Auctioneer
416 Greene St. Adel, IA (515) 993-4159 ~ d_auction@hotmail.com
See Us on the Web at www.daughertyauction.com