



## Sunday, September 11, 2016 • 12:00pm

17450 Meredith Dr. • Clive, IA

**For Questions Call Larry @ 515-240-0237**



Like us on Facebook:  
[www.facebook.com/daughertyauktion/](http://www.facebook.com/daughertyauktion/)

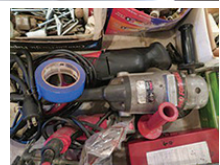
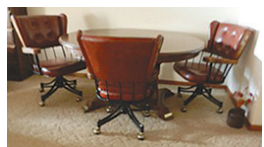
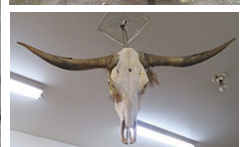
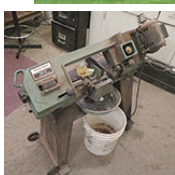
Follow us on Pinterest:  
[www.pinterest.com/daughertyau0091/](http://www.pinterest.com/daughertyau0091/)

- \*1961 560 Farmall (350 hrs, diesel, IH turbo manifold, WF, ride ready)
- \*Kiefer gooseneck tandem axle trailer (24' w/5' tail, fold up ramps)
- \*John Deere X495 diesel mower (62" deck front snowblower & blade, spray tank, chains & weights)
- \*CAT skid loader (2800 hrs, toothed bucket, forks, grapple forks, log splitter, 8' snow blade, 12" jib)
- \*7' Agri-Fab aerator & thatcher, leaf sweeper
- 8' snow blower blade-skidloader attachment
- IH #100 sickle mower (fast hitch, restored)

### Antiques & Lots of Tools:

Industrial pressure washer 2000 psi, (2) 5 gal drums, rivet gun  
 Antique Stanley mitre saw, wrenches, David White transit  
 Wheel Horse lawn & garden sprayer Briggs & Stratton motor  
 Antique tools, manure spreader-pull behind (like new) sockets  
 Crescent wrenches, 5,000 Honda generator, elec fence  
 3' Swensen sheet metal shear, elec sander, rolling creeper  
 Industrial chipper, welding table on castors, Porta Power  
 Vise grips, welding clamps, drill bits, bolt bins, pliers, pullers  
 Car tote, Hobart welder 210, acetylene set, hammer stapler  
 Stihl 320 gas leaf blower, Stihl 400 gas concrete saw  
 Small hand saws, antique wagon wheel wrench, angle grinders  
 Pickup tire chains, shelved storage cabinets, 3T floor jack  
 (3) Go-Carts, (2) Briggs & Stratton motors, elec heater  
 Romex wire stapler, tractor cab deer blind, (4) bolt cabinets  
 Many containers of nuts & bolts, fasteners, screws, nails  
 levels, straight edge, Coyote & turtle trap, stepstools  
 Hand branch trim saw, battery speed boat, shop safe (no keys)  
 Old GM repair manual, (2) meat smokers (gas & elec)  
 Steel stands, tractor splitting stand, live traps, Drill Doctor  
 Honda generator (5000 watt), hammers, tin snips, truck chains  
 Electric drills, Porter Cable 60 gal 220 air compressor  
 Large cutting torch w/tanks, air & elec impact tools  
 Airless paint sprayer, DADO saw blades, scaffolding platforms  
 10" tablesaw, mis hand tools, pipe vises & wrenches  
 Concrete form rails & stakes, shop floor vacuum, cherry picker  
 Large OTC bearing pullers, LP round floor heaters, IH tow bar  
 Flood lights (large stadium type), concrete bits, gas weed eaters  
 '01-07 Chevy bed liner 6 1/2", erosion mating & tubing, scroll saw  
 New skill sawzall, wood chipper, rolling steel scaffolding  
 Engine stand, drill press & bits, Stihl chainsaws, 8' stepladder  
 Alum telescope ladder, Tradesman steel bandsaw  
 3/4 sockets, torque wrenches, battery chargers, hog smoker  
 Cattle clippers, bearing pullers, 24' ext ladders  
 Hand conduit bender, worm drive 7 1/2" saw  
 (2) deer mounts, elk horn mount, (12) deer hangers  
 Long horn skull & horns, 33 record albums, (3) antique trunks  
 (2) dining room tables, primitives, 4 drawer file cabinet  
 Antique sausage press, wrought iron table & chairs, hornet nest  
 Outdoor love seat, steel desk, tables (wooden & banquet)  
 Antique potato slicer, Stop sign, antique cans, Christmas trees

\*There are a lot more items on the sale too numerous too mention!



## Larry Griggs, Seller

### Daugherty Auction & Real Estate Services, LLC.

Chad Daugherty ~ Owner/Auctioneer  
 Steve Maynes ~ Auctioneer  
 416 Greene St. Adel, IA (515) 993-4159 ~ [d\\_auction@hotmail.com](mailto:d_auction@hotmail.com)  
 See Us on the Web at [www.daughertyauktion.com](http://www.daughertyauktion.com)