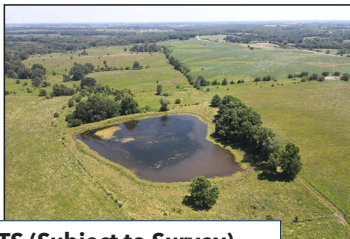


**VIRTUAL ONLINE**



# **ADAIR COUNTY, MISSOURI LAND AUCTION**

**Wednesday, September 21, 2022 at 10:00 AM**



**358 ACRES± • 5 TRACTS (Subject to Survey)**

- ✓ **PRODUCTIVE CROPLAND!**
- ✓ **IMPROVED PASTURELAND/HAY PRODUCTION!**
- ✓ **PRIME RURAL BUILDING SITES!**
- ✓ **EXCELLENT HUNTING/RECREATIONAL ACREAGE!**

The farm is located approximately 4 miles northeast of Kirksville, MO and approximately 8.7 mi southeast of Greentop, MO in Sections 14 & 23, T63N•R15W, Benton Township, Adair County, MO.

**Charles C. Alexander & Judy K. Alexander**

**Representing Attorney:** David Rouner | Rouner Law Office LLC  
400 N. Franklin Street | Kirksville, MO 63501 | (660) 665-7515

**Title Work:** Pickell Abstract Company  
115 S. Franklin | Kirksville, MO 63501 | (660) 665-8324

**Auction Managers:**  
Bill Fretwell (660) 341-7735 & Jennifer Wood (217) 257-8812



**SULLIVAN  
AUCTIONEERS, LLC**

**(844) 847-2161**  
[www.SullivanAuctioneers.com](http://www.SullivanAuctioneers.com)  
License #444000107