

FARM & HOUSEHOLD AUCTION

Saturday, September 21st @ 10:00 a.m.

Real Estate Sells @ 12:00 p.m.

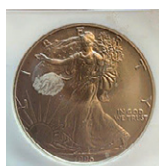
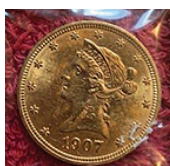
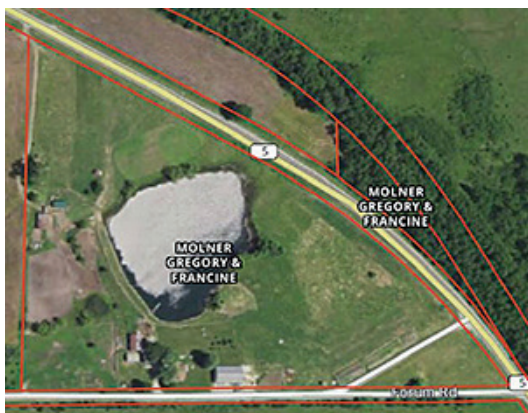
Francine Molner, Owner

Francine Molner has decided to sell the following personal property and real estate located at 19745 Forum Rd. Purdin Mo at public auction. Her and her late husband lived at this location for many years and have collected several items so there will be something for everyone. You don't want to miss this auction. This property offers several outbuildings, a large shed as well as a nice clean pond area complete with a dock and diving board. From Hwy 36 turn north on Hwy 5 follow Hwy 5 through Purdin and go approximately 1/2 mile to Forum Rd turn left. From Milan go south on Hwy 5 through Browning go approximately 10 miles to Forum Rd turn Right Watch for auction signs.

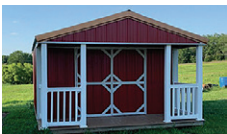
TRACT OF LAND: 17

Acres grass farm that has a park-like setting w/a nice 2 story home w/3 bedroom 2 bath & unfinished basement w/central heat and air. It has a newly poured garage that is ready for you to finish the way you want it. A beautiful 2 acre stocked lake sets behind the home that you can enjoy from the deck. There are multiple out buildings consisting of a 40x70 machine shed w/a finished office w/heat &

air, horse barn, chicken coop, loafing shed, a nice hoop building that can be used as an indoor riding arena. There is also a small orchard in the backyard. This property is ideal for the horse lovers or family wanting a small acreage.



COINS & GUNS: 1908 \$2.50 Indian gold, 1912 \$5 Indian Gold, 1881 s \$5 Liberty gold. 1907 \$10 Liberty gold, 1881 s Morgan PCGS MS 64, 1995 Eagle MS 69, 2012 p Kangaroo High Relief MS70, 4 Silver Eagle rounds, 8 Silver Liberty silver rounds, 5oz Liberty silver round, 13 copper Liberty rounds w/more to add by sale day. Remington 16 ga shotgun, Smith & Wesson 270 w/scope. **TRACTOR, CARS, TRAILER & SHED:** Kubota MX 5200 4x4 w/LA 1065 loader 1095 hrs, RCR1272 Land Pride brush cutter, Front forks quick attach, Bale Spike, 2004 Ford Explorer 4x4 185000 miles, Honda Civic 283000 miles, Station Wagon 400000 miles, 2 Horse bumper hitch trailer. New 12x16 Portable shed w/front porch. Large selection of various dimensions of lumber. **FARM EQUIPMENT:** Fuel barrel w/stand, 2T feed bin, chicken coops, 2-12' feed bunks, 1 corral panel w/bow gate, 8 corral panels, silage feeder panels, calf huts, combination panels, cattle panels, snow fence, large selection of T posts, elec fence posts & wire, hay ring, poly water tanks, Briggs & Stratton generator like new, 55 gal barrels, chicken feeders & waters, Salamander heater, feed buckets, alum trash cans, feed & salt blocks, seed, concrete blocks, 4 wheel yard wagon, portable stainless milking machine, squirrel cage fan, 5 gal buckets, plastic barrels, central air unit & furnace. **ANTIQUES, PRIMITIVES & COLLECTIBLES:** Pioneer Maid wood cook stove, 4 drawer dresser w/mirror, small wooden desk, oak 24 drawer library cabinet, steel wagon wheel, 2 dr wooden cabinet, wardrobe, child's sewing machine, doors, wooden cupboard, shoulder eggbeater dowel cutter, post vise, house jacks, wooden crates & boxes, wooden high chair, wooden porch swing, egg beater drill, oil cans, draw knife, wire basket, scales. **FURNITURE & HOUSEHOLD:** Dresser, corner bench, trunk, chest of drawers, china cabinet, metal filing cabinets, wooden shelves, wooden cabinet, refrigerator, 3 chest type freezers, commercial glass fronted cooler, ice machine w/box, commercial stainless freezer, pressure cooker, ice cream freezer, new canning jars, pots, pans & kitchen utensils. **TOOLS & GARDENING:** 2 portable air compressors, wheelbarrows, handyman jack, drawbar, receiver hitches, air hoses, Stihl 4 mix trimmer, Bostitch air framing hammer in case, dust mizer, skil circular saw, Makita chop saw, deep cycle battery, corn knives, sawzall, ext cords, drill bits, Mr. Buddy heater, Dura heater, 68000 BTU DeWalt propane heater still in box, elec heaters, sledge hammers, chain booms, sheetrock square, bolt cutters, sockets, toolboxes, crowbars, hammers, screwdrivers, levels, elec fencer, battery charger, 2-8 ft alum stepladder, 24 ft alum ext ladder, 6 ft fiberglass ladder, sawhorses, brooms, rakes, shovels, wooden stepladder, rolls of romex wire, nuts & bolts, breaker boxes, live traps, grease guns, wood clamps, hand saws, vise grips, gate hinges, plastic totes.



TERMS: Real Estate: 5% non-refundable payable day of sale. Sign a binding real estate contract day of sale. Seller will provide title insurance & close within 30 days.

Croy Auction Service

Lance Croy, Auctioneer

816-284-2140

This is a partial listing--more added at sale time. No responsible for accidents. Statements made day of sale take precedence over printed material. Cash, all checks will require valid driver's license & credit cards accepted w/a 5% convenience fee.