

2 DAY AUCTION OF RICH MCCORMICK'S COLLECTION

SATURDAY, SEPT. 8TH, 2012 STARTING AT 11:00 A.M. • SUNDAY, SEPT. 9TH, 2012, BEGINNING AT 12:00 NOON
310 N. 10TH STREET, WINTERSET, IOWA

SATURDAY

Eclipse 8' wooden top on steel tower working condition wind mill; Eclipse 1/2 moon windmill weight; 34' Dempster annual-oiled 8' metal fan on steel 4-legged tower, complete and ready to go; windmill fans, blades, tails, & asst parts; Cast iron wheel; Nutting Depot track cart; sm cast-iron Rumely power grain mill; Jones cast-iron & brass scale; old license plates; old road maps; gas lamps parts & shades; Farm Life rubber stamp set; tin banks; asst tins; erector set; Dazey 2 qt churn; GE TV & Radio Service clock; milk bottles...Northland cream top w/spoon, 4 Blue Grass milk bottles w/carrier, Flynn cream top & more; sev yardsticks; 17 1/2" cast iron bell w/yoke; blue granite coffee pot; adv wood boxes; oil lamps; metal Aladdin w/glass shade; Superior cream separator; 3 wooden egg crates; 6 lightning rods, 8 balls...2 light blue acorn, 2 amber, 2 pink, 1 white, 1 light blue; Murry Western Flyer pedal car (restored); A.R. Smith coaster snow ski; Radio Line coaster; Case Tractor Morrissey Machinery Co, Winterset IA mirror; The Home of Perfection Seeds 50 Years of Service 1891-1941 mirror & thermometer; The Aultman & Taylor Machinery Co metal sign; barn & railroad lanterns; 12'-14' wooden wind charger; wooden seed cleaner & grate No. VI exc; old car lights, lenses, ah-ooga horn & more; Sandwich wooden corn sheller New Corn King excellent; Emerson dockage tester Hart Carter Company excellent; wooden barrels; 44" wood pulley and other wooden pulleys; copper & galvanized boilers; Lansing Company barrel mover; 10 gal divided galv water can; 2 nice oil bottles w/spouts Polarinc Standard & ISO-VIS Standard Oil; cherry pitter; sev adv broom holders; Emerson brass bladed fan; 8" brass steam whistle; Old Milwaukee air compressor w/flatt belt driven; approx 30 old tractor & engine magnetos; 2 wooden cased wagon wheel oilers; good paper adv; JD wooden walking plow exc; nice 3'x4' Chevrolet Service Price Guide (1943); feed sacks...Ames, Pioneer, Earl May, Sargent, Watkins, Wayne Feeds, Dekalb, Purina & more; hay fork, hay knife; a few road signs including 16" cast iron circle IA 16; old plastic AC Fire Ring Spark Plug clock; Goodrich metal tire holder; Texaco Neon clock (rebuilt); misc other smalls.

STONEWARE: 7' Sleepy Eye pitcher (hairline); Splash Proof Buttermilk feeder w/base; 50 gal Western (cracked); 30 gal Western; 2-25 gallon Westerns; 6 & 8 gallon Westerns; 12 gal Western w/bales; 3 gallon Western; Union Birchleaf to include, 2,3,4, & 15 gallon; 2 gallon Red Wing; 20 gallon Red Wing big wing; Red Wing Ko-Rec feeder w/base; 3 gallon Ruckles; Wier canning jar; crock jug; 12 gal Fort Dodge crock; Stoneware books, other stoneware items & more.

TOYS: Cast iron Avery 40-80 tractor; Keystone Ride'em steam shovel; 2 Keystone dump trucks; Structo truck; steel cargo trailer; Structo Jeep; Structo livestock truck & trailer; Tru-Scale trailer; Tonka Jeep; Precision JD 4020 1/16th scale; Precision model A JD 1/16th scale; Ertl Cockshutt 560 diesel; Blackhawk 50; Blackhawk 20; Ertl Hesston 980 DT tractor; Allis-Chalmers WD-45; 1934 JD model A tractor; Case "L" tractor; 1/16th Case 600; Toy Farmer; JD 1957 Model 720 Hi-Crop; JD 1928 Model GP standard; McCormick-Deering model M; JD model R; 1915 JD Waterloo Boy; JD Model R; JD 1961 4010 gas; JD 4010 w/cab; JD 1953 model D tractor; Ford Golden Jubilee tractor; older Ertl 8550; Allis Chalmers 70/30 w/cab; Gleaner L2; Allis Chalmers flare-side wagon; JD flare-side wagon; Oliver bailer; Oliver 77; Oliver 1850; Tru Scale 890; True scale 2 btm plow; True Scale tandem disk; True Scale hayrack; True Scale elevator, loader, trailer; Grey toys out of Eldora, IA...all 1/16th scale...F-30, W-9 Int'l, Allis Chalmers E, Oliver 70, JD GP, Hartparr Massey, Challenger, Case steam engine, McCormick Deering 1024, mounted corn picker, tractor; Ertl Ford 7710 tractor 1/16th; JD model M tractor; JD compact utility tractor; JD Utility wide end loader; Case Agra-King; JD Sound-guard; McCormick WD-9 tractor; JD 2755 Utility tractor; 8N Ford; Allis Chalmers 4W-305 w/cab; Deutz-Allis; JD 1953 model 60 Orchard tractor; Allis Chalmers D-21; JD 2520; Int'l 1856 w/cab; Allis Chalmers 7045; International 966; Allis Chalmers D-19; Ford 4600; Fod 981; JD lawn tractor; JD model D; 1/43rd; Massey Harris Challenger; Ford 8-N.

GAS ENGINES: 4HP Root & Vandervoort Hit & Miss on skids, older restoration (running not a side shaft); 2 single cylinder Maytags; 2 Briggs & Stratton model F.H. (older restoration, runs); Clinton older upright 1 cylinder model # D1102B2A (unrestored loose); 3HP Fuller & Johnson Hit & Miss nice original on tracks (unrestored runs); Gade Bros. 2 1/2HP low base hit & miss Iowa Falls on Gade tracks, bronze carburetor (older restoration runs); JD 1 1/2HP hit & miss on tracks (older restoration runs); T. Eaton 3HP Canadian engine on tracks, unrestored runs; Cushman upright Model C (stuck).

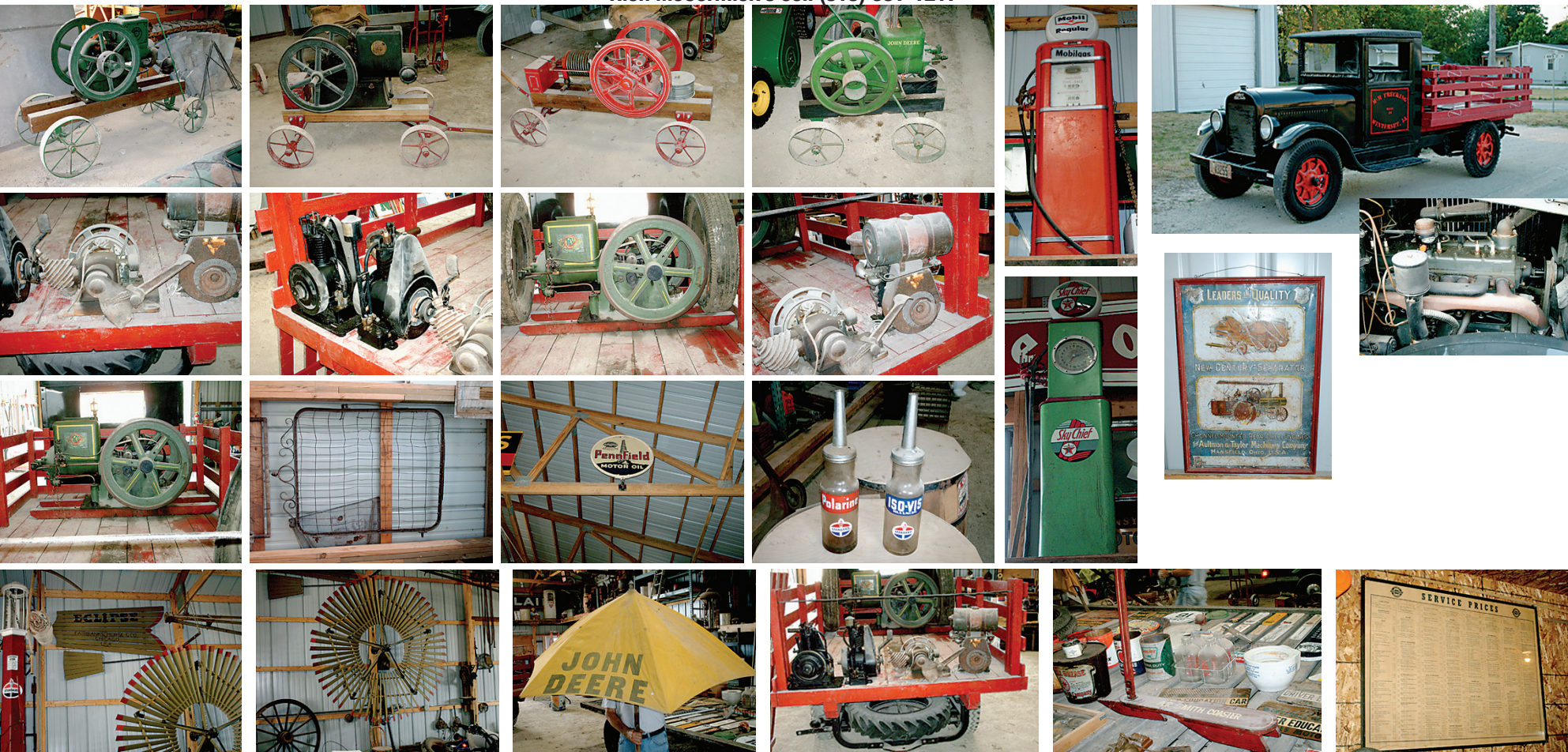
TRUCK: 1928 REO Speed Wagon pickup, 2nd - owner all restored. Needs brake work then drive home if you want. Nice old truck.

AUCTIONEER'S NOTE: This is a great auction w/many very nice items throughout the sale. Check out our website for more pictures. Local motels...Super 8 in Winterset (515) 462-4888; Edetowner Motel in De Soto (515) 834-2641; Many motels in West Des Moines w/easy access to Interstates 35 & 80, approximately 25 miles. Stay over, enjoy the Covered Bridges, the John Wayne Birthplace & other great points of interest in the area.

TERMS OF SALE: We need to see proper ID in order to give out bid numbers. We accept cash & good checks only. We are not responsible in the case of accident or theft. Thank You.

Kybo

Rich McCormick's cell (515) 681-1217



HARTMAN AUCTIONEERING

Steve Hartman 515-468-7857 • 515-462-4584

www.stevenshartmanauctioneers.com