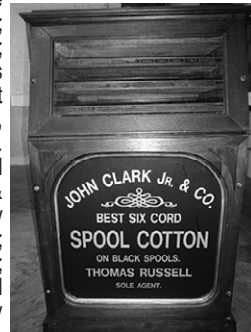


ESTATE AUCTION

Located Duwa's Auction Building 1365 Hwy 22, Wellman or 1 1/2 mi West of Wellman on Hwy 22

Sat. – Sept. 17, 2022 – 9:00am

SPOOL CABINETS – DYE CABINETS – 6 FEATHERLITE SINGER SEWING MACHINES – VINTAGE SEWING MACHINES W/STANDS – 80 CHILD'S SEWING MACHINE COLLECTION: Walnut 34"x18"x21" John Clark Jr & Co spool cabinet; Oak J&P Coats 3 dr & 6 dr spool cabinets; Crowley's Oak 10 dr Needle cabinet; Crowley's Oak 1 dr Needle cabinet; 2-Walnut double sided Diamond Dyes cabinets; Walnut Dy-o-la double sided Dyes cabinet; Walnut German Household Dyes-for Wool-Silk-Cotton or Linen cabinet; Wall hung Rainbow Dyes cabinet-One Dye for all Fabrics; Wall hanging walnut German Seed cabinet; Sew Handy-Standard Featherlite sewing machine; Howe, Stitchwell & Singer machines w/cabinets; Astra & New National port machines; Ideal, German Singer treadle machines, **20 Child's Cast sewing machines:** Willcox & Gibbs, Singer, Mother's Helper, Spenser, Smith & TGGE, Baby, The Little Comfort, Grain, Essex-Made in England, Made in Germany, Baby Grand, Peter Pan, Stitchwell, etc, **60 Tin Child's sewing machines:** The Little Mother, Lindstrom-Little Miss, Diana, Junior Miss, Gateway, Casiges, So Toy, Sew Master, Little Betty's, The Tabitha, assorted w/decorative stenciling-Made in Germany & others; Belding silk thread-Brothers & Co mini holder; Floor style sewing caddy/cabinets; Table clamp on pin cushion; Shaker style sewing baskets; **FURNITURE – QUILTS – LONGENBERGER BASKETS:** Simmons Hdwe Co–Oak White Clad ice box; Pine pie safe w/6 punched tins; 48" rd oak table w/5 leaves & 6 dining chairs; Walnut 3 drawer dresser; 38" Oak church pew; Pine dough box; Wooden tub; Hickory rocker; Child's high chairs; Oak sewing stands; Walnut drop leaf dining table w/5 leaves & 6 caned bottom chairs; Quilt rack; Rocking cradle; Green Arrow child's wagon; Child's chairs/rockers/school desk; Yarn winders; Wicker doll buggies; Benches; Wooden ironing board; Little Plate chalkboard; Walnut doll chest; **Prints:** DeLaval Adv poster/tin; 1992 Al Koenig Amish print; P Buckley Moss-Old Country Store by the Yard; **Vintage Quilts:** Log Cabin, Trip Around the World, Postage Stamp, Sun Dial, Tulip, Christmas stripes, Dresden Plate, Lone Star, Assd variations of colors & styles of 9 patch, Wool black/red/green quilt; 1990 Dorothy Miller Preheim-Quilted by Freeman Academy, Morning glory, Road to Kalona quilt & others; ABC baby size; Quilted Wall hangings: Assorted solid colored vintage hangings, Ocean wave, basket, Trip Around the World, 9 patch, Red/White & Blue, Log Cabin, Denim, Crazy, 1988 Log Cabin Voyager w/local names, Cutter quilts; Many vintage linens; **33+ Longenberger baskets:** Traditions Collections: 2-Generosity, Hospitality & Community; Gathering baskets; Planter; Collector's Club, Bonnie's 90th Birthday; Pie baskets; '91, '93, '95 & '99 Christmas Collection & others; **STONEWARE – PRIMITIVES:** Salt glazed jugs: 2 gal Beehive w/Cobalt design-Somerset Pottersworks, 2 gal w/mesh design-Return to James Fe & Bros- Rochester NY, 2 gal w/bird design-Whitestraca?, 1 gal w/flower design-NY Stoneware Co; 2 gal churn-Hamilton & Johnson-Greensboro, PA; 1/2 gal churn; E.S.&B. New Brighton PA jardinière; **Salt glazed Crocks:** 2 gal-NY Stoneware Co, 1 gal, 3 gal w/dragonfly design, 1 gal tall, 1 gal E.B. Norton, 2gal Red Wing w/Target, 2 & 3 gal; **Misc Stoneware:** 5 gal Western crock & jug; 2 gal star & sugar crocks; Butter crocks; Chicken water; 1 gal Western jug; **Primitives:** Wooden & Metal butter churns: Dazez #80 glass churn; 22+ Butter Molds including: Double Pineapple, Flowers, Sheep, Bird, Many unique shapes & sizes; 25+ Butter Pat collection: cow, flowers, etc; White Mountain Jr Salesman Sample & #2-1 qt ice cream freezers; Adlake NYCS RR lantern; 3 doz wooden egg carrier; Cast iron, granite, tin & wooden buckets; Arcade Imperial coffee grinder; Watkins wooden carrier; Watkins tins; Garden gate; Jack Spratt & other early Kitchen tins; Gray graniteware; Cast iron salesman cream separator; Nutmeg grinders; Unique beaters; Gray Enameled covered jar, unique funnel, sugar/cream; Cast iron pea huller; Gray granite wall hanging w/cup; Primitive kitchen utensils; Chocolate molds; Wooden canister spice set; Child's telephones; Vintage bar soap; **Tin Toys:** Child's Dayton wheel barrow; Wagon, Sand dump; Jack & Jill went up the hill-Wishing Well; J Chain & Three Little Pigs wash tubs; Sand bucket-Ohio Art; 2-ABC plates; Kitchen & doll house sets; Snow White & Dwarf's pail; Blue granite child's dinnerware, Red Riding Hood tine dinnerware & other tin dinnerware; Santa Clause dinner pail; Tin chicken/cart toy; **5 SALESMAN SAMPLE COOKING STOVES – CHILD'S WASH MACHINES:** Eldora No 110 wringer washer w/stand; 2 large wooden wash tubs; Salesman Sample-Maytag wringer washer; **Wash Machines:** Glass Modern Mist & Busy Betty #354, Tin-Walt Disney, 2-J Chain-Dolly's Laundry, 2-J Chain-Three Little Pigs, The Princess, The Wolverine, Deluxe & others; Wooden Wee Washer, Horseshoe Brand Salesman sample wringer; Salesman sample-Banner #30 wringer; **GLASSWARE:** Aladdin lamps; kerosene lamps w/match holders; Finger lamps; Single angle lamp; 3-Doll glass whipper jars; Oneida 12 piece set of silverware; **ADVERTISING:** Walnut 25"x11"x18" DeLaval Cream Separator cabinet; DeLaval Holstein, Guernsey & Jersey cow/calf sets; 2 Jersey cows, DeLaval match holder & oil tin; **Tip Trays:** Bettendorf Steel gear wagon & pin, DeLaval Cream Separators, Quick Meal Ranges & Fairy Soap; **Pot Scrapers:** Junket, Sharples, King Midas, Grand, Penn & Fairmont; King Midas flour scoop; Early children's books-Dick & Jane, etc; **APPLIANCES & HOUSEHOLD FURNITURE:** Maytag Super Cap Nat. gas range; Frigidaire 20cu ft upright freezer; Kenmore Elite washer & ele dryer; Floral blue/ivory couch; Tan w/oak trim couch, loveseat & matching oak end tables; 4 piece Oak like Bedroom set w/Highboy, dresser, night stand & bed frame; Maroon Lazy Boy recliner; Office chairs; Storage cabinets; Shelving; Card tables/chairs; Park bench; **Sewing Machines:** JC Penny Model 6984A, 3-Singers, Nelco, White Treadle, Singer 301 & 301A & other port Singer machines, Many quilt frames, books & patterns; Loads of quilt fabric yardage/pieces; Fabric measuring machine/ table; Sewing supplies; Electrolux vacs; **KITCHEN – HOUSEHOLD MISC:** Oneida cookware; Blenders; Roaster; Slow cookers; Baking pans; Mixing bowls; Corningware; Corolle dinnerware; Silverware; Canning jars; Cookbooks; Little Middleton dolls in boxes; Large collection of Beanie Babies; Religious books, CD's, Cassettes & VCR's; Household linens; Garden cart & tools. **OPEN HOUSE:** Friday Sept 16th - Noon-7pm. **ORDER OF SALE:** Two rings throughout the day w/Household & collectibles. 11:30am-Appliances. 1:30pm-Spool cabinets & furniture.



SARA A. MILLER ESTATE: owner

AUCTIONEERS: Dwight Duwa 319-646-6775 – Jeff Wille

Web: duwasauktion.com

Terms: Cash or ck w/ID

Lunch: Good Samaritan's

Not responsible for accidents/theft