



McAfee/Hayes Auction Service, LLC
375 S Johnson • Kahoka, MO
660-727-3796
www.mcafeeauctionservice.com

TIMED ONLINE ONLY ESTATE FARM MACHINERY AUCTION

LOTS START ENDING AT 10 AM ON
TUESDAY SEPTEMBER 14TH



SELLING TRACTORS,
TRUCK, ROTARY CUTTER,
TILLAGE & MISC.
EQUIPMENT, SALVAGE,
FARM RELATED

CHECK OUR WEBSITE FOR COMPLETE DETAILS

ITEMS CAN BE VIEWED SEPT 9TH- SALE DAY 9-5 DAILY
LOCATED AT 3599 JOHNSON ST. ROAD, KEOKUK IA
(AUCTION STAFF ONSITE SUNDAY SEPT 12TH
10 A.M. - NOON TO START TRACTORS)

DWIGHT NELSON ESTATE



McAfee/Hayes Auction Service, LLC
375 S Johnson • Kahoka, MO
660-727-3796
www.mcafeeauctionservice.com

TIMED ONLINE ONLY FARM MACHINERY & TOOL AUCTION

LOTS START ENDING AT 10 AM ON
TUESDAY SEPTEMBER 21ST



SELLING TRACTORS, COMBINE, RTV, TRAILERS, ROTARY CUTTERS,
FARM EQUIP, FARM RELATED, SHOP & TOOLS RELATED.

CHECK OUR WEBSITE FOR COMPLETE DETAILS

MAJORITY OF ITEMS CAN BE PREVIEWED ON OUR LOT
AT 375 S JOHNSON, KAHOKA (COMBINE & GRAIN CART OFF SITE)

THE FAMILIES OF
CLIFFORD & LOLA GARES, GEORGE T. MARTIN & OTHERS



McAfee/Hayes Auction Service, LLC
375 S Johnson • Kahoka, MO
660-727-3796
www.mcafeeauctionservice.com

Clark County, MO

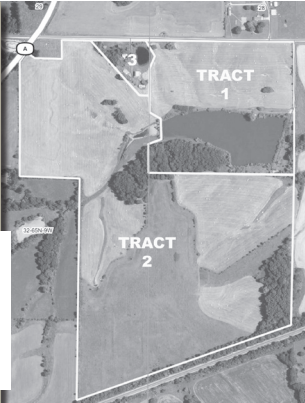
LAND AUCTION

Sale will be conducted at the Care Building located at
451 N. Vine Street Kahoka, MO

160 ACRES/ 3 TRACTS

Tracts located 1/4 miles north of Wyaconda, MO on Hwy A.
(Address : 11980 Co Rd 127-EW, Wyaconda MO)

Productive
Tillable
Farmland,
CRP Income,
9.63 Acre Lake,
Homestead/
Out Buildings



**Tuesday,
October
12TH
at 6 PM**

THE FAMILY OF GEORGE T. MARTIN



McAfee/Hayes Auction Service, LLC
375 S Johnson • Kahoka, MO
660-727-3796
www.mcafeeauctionservice.com

Clark County, MO

LAND AUCTION

Sale will be conducted at the Care Building located at
451 N. Vine Street Kahoka, MO

TUESDAY, OCTOBER 19TH - 6 PM

334 ACRES/ 5 TRACTS



The Gares farms are lying South and Southeast of Kahoka, MO
ranging from 2 miles to 4 3/4 miles from town. These tracts
offer attractive combination farms with productive rowcrop
acreage, pasture land with fencing, lake, ponds, several building
sites and a homestead with several desirable outbuildings.

THE FAMILY OF
CLIFFORD & LOLA GARES, SELLER
DENNIS W. SMITH, REP. ATTORNEY