

Real Estate

4 2 acres m/l Polk County

Auction

"We Sell it the Day You Need it Sold!"

Thursday, October 10, 2013 • 10:00 a.m.

Sale Site: Airport Holiday Inn ~ Rm. 298

6111 Fleur Dr • Des Moines, IA

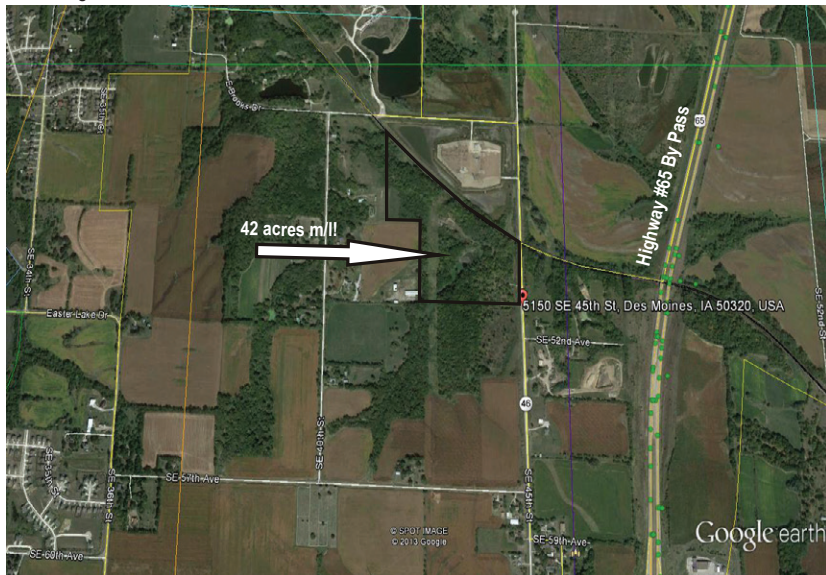
Location of Property: 5150 SE 45th St. Carlisle Iowa

Take the Highway #65 Bypass on the south east side of Des Moines, to Exit 73 (SE Army Post Road), west on Army Post to SE 45th St., North to property.

General Description: Offering 42 acres mostly timberland located just off the US Highway 65 Bypass near Avon w/frontage to SE 45th St. Pond!

Zoning: A-1 ~ Agricultural District

Taxes: \$ 1,812.79



Terms: Cash, 10% down payment day of auction with balance due on or about November 10, 2013 at closing. Property is offered in "AS-IS" Condition.

Marjorie Tinlin & The Estate of Norman Tinlin

Daugherty Auction & Real Estate Services, Inc.

Kelly Daugherty, Chad Daugherty ~ Auctioneers

416 Greene St. Adel, IA (515) 993-4159 ~ d_auction@botmail.com

Horstman Realty, Broker & Closing Agent

3523 E 26th St. Des Moines Iowa 50317

Verlen "Vern" Dableen, Real Estate Counselor

515-265-5211

See Us on the Web at www.daughertyauction.com

The information in this brochure is from sources deemed to be reliable but it cannot be guaranteed by Daugherty Auction and Real Estate Services, Inc.