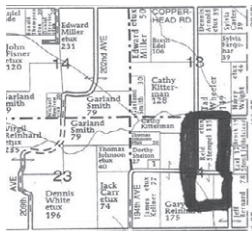


LAND AUCTION

FRIDAY, OCTOBER 25, 2013 10:00 AM

120 ACRES M/L

SECTION 24, ADAMS TOWNSHIP, WAPELLO COUNTY, IOWA



TRACT I – 40 ACRES m/l: Bare land, approximately 13 Acres of open pasture. balance in timber.

TRACT II – 60 ACRES m/l: Approximately 20 Acres tillable, currently used as hay land. Balance in timber.

TRACT III – 20 ACRES m/l: All in timber.

These 3 tracts are prime hunting land, superb whitetail deer and turkey hunting. These 3 tracts of land will be offered with buyer's choice, in which they may elect to buy one or more parcels.

TERMS: 20% down day of sale, balance in cash upon delivery of a Warranty *Deed*, accompanied by Abstract of Title showing merchantable title. Real estate taxes will be pro-rated to possession date, possession given upon settlement.

REAL ESTATE WILL SELL AT 10:00 AM AT THE PROPERTY LOCATION

South of Ottumwa on the Lake Road, approx. 2-1/2 miles, then West on Copperhead Road approx. 2-1/2 miles to 194th, then South 1-1/4 miles OR 5 miles southeast of Blakesburg

For further particulars or an appointment to inspect the property,
please call the auction company: 641-682-5465.

Announcements made day of sale take precedence over any advertising.

REID ELDEN & SUSAN EMMA STEMPEL

JOINT REVOCABLE TRUST, OWNER



Auctioneers:

Jim Kosman

Roger Clingan

Todd Carroll

AL MARTIN REAL ESTATE & AUCTION CO.

307 Church Street
Ottumwa, Iowa
641-682-5465

www.almartinauction.net

Find us on facebook at [AlMartinRealEstateAuctionCo](https://www.facebook.com/AlMartinRealEstateAuctionCo)