

Fall Consignment Auction

September 21st 10:00AM
Clarke County Fairgrounds
2070 W McLane St, Osceola, IA 50213



Vehicles

2009 Chevy Silverado LT Pickup, good tires, loaded, 65,102 miles

Tractors, Combines, & Implements

1975 IH 1466, new motor, cab kit, air, & paint, nearly new rubber; IH 1440 combine, 3800 hrs, field ready, 820 bean head, 963 corn head; IH chisel plow (9 shank) 220 Bu. Gravity Flow wagon on big Husker Gear, flare box wagon, 6 bale hay trailer with dual wheels; 1952 JD 50, new manifold, carburetor, & radiator, straight tin original paint, like-new rubber; IH 240 wide-front fast hitch, runs good, good rubber; 8N Ford with 5ft brush mower, new tires, carburetor, & governor, no overdrive; Krause 18 ft disk with new blades, 60ft Kewanee auger; Vermeer 605J bailer with lots of Super J updates, 3 year old belts and hydraulic twine tie; TRIGGS seeder cart with IH seeder on rear, 40ft Kewanee elevator, PTO driven; 16ft stock trailer; white field boss 6 row planter; 7' Bush Hog pull type; 7' 3 pt. Bush Hog; 12' JD 727 pull-type riding mower; JH 100 7' sickle mower; PTO generator; *pending*-Allis 3pt 7' sickle belt drive mower; heavy duty 8x7 tilt bed trailer; 4 wheeler, sprayer tank, and boom; folding grain hopper; 6ft x 12ft barge wagon; hay rack

(75) square alfalfa/grass mix bales

Tools

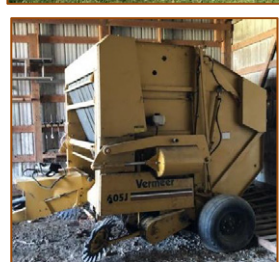
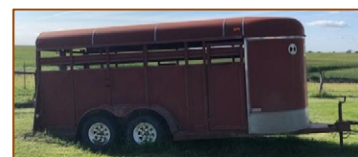
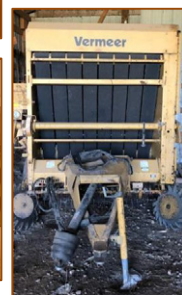
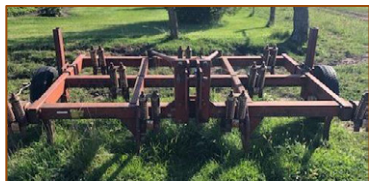
(5) rolls of snow fence; welding table with vice; 25 gallon 2 wheel sprayer with 7ft boom; 170 gallon water tank with spigot; large wooden fan; grain aerator; (4) car wheel dollies; bucket of crowbars; bucket of hammers; extension cord with reel; grain moisture tester; large and small pet carriers; cat & dog feeder; pan of ball hitches; 110 volt electric fence; electric timer; various electrical wires; (2) hand trucks; bucket of hydraulic transmission oil; bucket of 1540 engine oil; big roll of entrance wire; pull behind tiller – needs engine; (2) Bostache stick nailers; (2) Bostache roofing nailers; (2) Bostache finish nailers; (2) pass load ½inch crown staples; Milwaukee sawsall; Craftsman skill saw; ladder jacks; hand saws; (40) 12 ft steel – used; new-in-box Ridgid tile wet saw; 20,000 lb lifting slings; outboard tanks; Rockwell/Delta wood planer; DAPC Air tools; 30in x 30in meat cutting board; (5) 285 70R17 Ironman tires; various tools; small truck toolbox; new cast iron sub pump; new barrel pump;

Hunting & Outdoors Items

Henry 22 lever action rifle; Savage M25 222; Pop up blind; steel targets; shells - .204 cal, .243 cal, 12-gauge slugs, brass 556, 357, 40, and 308; reloading supplies; steel knock-down targets; 22 Cricket; several hunting bows; 38 – 357 speed loaders with pouches

Miscellaneous

Pool cues with cases; collectibles; Robbins Lightning Rod kit; boxes of DVD's; video gaming systems; musical instruments; fishing equipment; **& many more unlisted miscellaneous items**



Terms of Sale: Nothing removed unless settled for with the cashier. Cash or good check only. All announcements made sale date take precedence over any and all printed materials. Many items still to be unpacked on day of sale.**Restrooms and food on property**

Webb Auction Service
Jeff and Dylan Webb
641-414-3000
641-414-1025