

Construction Auction

Saturday, October 1st at 9:30 a.m.

Since I am quitting the business known as Dirks Construction, we will sell the following at public auction.

Directions: From the 4-way stop in Jamesport, go east on Hwy F approx. 5 blocks to 507 E Auberry Grove, Jamesport, MO 64648. Follow auction signs on sale day.

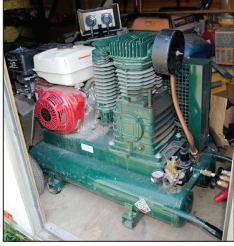


Sky Track – Track loader – Trailers

Genie model GTH644 R&R all axle complete system-new tie rod ends & new bushings on all axle, 1977 J.D. 4630 tractor w/sound guard cab-diesel-engine-quad range-dual wheel w/good rubber all the way around-showing 5992 hrs & 3pt-3 way hydro on rear-serial #4630H030130R (real nice tractor) *3pt quick attach sells separate, 1969 J.D. Diesel 4020 Powershift w/rops-excellent rubber-3pt serial #5NT213P132627R – a real nice tractor, 2-Reynolds model #6c & 6p pull behind dirt scoops w/new hydro hoses- serial #8850, J.D. head attachment for harvesting fescue, Caterpillar track loader model #963-serial #11Z00232-arrangement #8G1432-Engine #330407705140-7N2330-transmission #4TA00536-3G1197 (a real nice and good working machine), Marshall tree saw front skid steer attach w/rotary head-has been used very little (really nice machine), 3pt tool bar, 3pt J.D. rear blade, Koehn Versatile 3pt hitch attach, IH 20' harrow tool bar, Howse 7' skid steer attach brush cutter, J.D. tractor bumper fits 4360, tool bar cultivator, 3pt 20' cultivator, United Farm 13' 3pt drill, IH bottom plow, J.D. 210 riding lawn mower, Troy Bilt push mower, ATV seed spreader, 2000 Cargo Mate 5th wheel enclosed 8'x36' double axle w/8' interior head clearance & side entrance door (very good trailer), Haulmark 30' enclosed bumper hitch-double axle-rear ramp gate-2side entrance doors, 2012 Arising enclosed bumper hitch-double axle-22' rear ramp gate-side door access (a really nice trailer), 2009 Roadmaster 12' enclosed single axle bumper hitch trailer w/side entrance and double rear door, 2009 Extra Tuff 7'x12' single axle office trailer w/side door & windows (a really nice trailer), 2-1994 Great Dane dry freight 28' trailers w/wheels and ready to travel down the road (no title).

Commercial Shop Tools – Spray Paint Rigs & Generators

MR 175,000-BTU dual fuel heater, diesel TI 7000 LXR generator, 2-Graco commercial paint spraying rigs Honda 5hp motor TexSpray w/6500 HD & hose reel, Rolair twin tank 2 wheel portable air compressor w/Honda GX270 engine & 2 stage compressor-same as new, Acetylene torch set w/cart and accessories, comm. air hoses, Knack metal storage chest w/lockable lid, 2 Generac XP8000E generators, Generac XG8000E portable generator, Tahoe 10,000 TI portable generator, 2 B&S 3500 watt generators, 5-LP heaters, 2 or 3



Lift Rite pallet jacks, 3 Paslode battery framing nailers, Bosch large spline hammer drill w/case, Dewalt electric screw guns-several, Dewalt chop saw, Spud wrenches, socket sets, Craftsman 1/2" impact wrench, cordless nibbler tool, electric nibbler, Dewalt 18volt cordless impact & metal shears, SDS drill bit, several 40' & 32' & 24' ext. ladders, 2 sets ladder jacks, aluminum table for vinyl siding electric saw, aluminum 18' slider walk board, 12' aluminum solid walk board, 2 Baker commercial scaffolding, 2 drywall carts, several boxes new 14" chop saw blades, 2 ladder racks for pickups, Yamaha 3" trash pump-brand new, older line stripper paint machine, 10' aluminum ext ladder, T squares, flood lights, 5 mop buckets, Milwaukee & Rigid chop saws, drywall stilts, 4-Better Built metal job boxes, 14' road culvert, 24" opening, 500 & 325 gal plastic water tanks, large pile electric HD cords, several 5pt safety harnesses, 6 or 8 25" retractable Rebel lanyards, lanyard tie offs, large C clamps, 2-steel pipe racks for storing pipe, 1 set mud pump tools, Bosch 36v cordless tools, Milwaukee sawzall-electric, AccuLine suspended ceiling laser unit w/case, several ramset w/ring fed ammo.

Lumber – Building Materials & Commercial Metal

2x12 lumber, 6x6 treated post, several 4'x8' OSB sheets, very large lot of insulation-various sizes, 23 pieces new sheet rock 8' to 12' long, 70 pieces pine 2x4 studs 8' long, 4x4 cedar 12', cedar mantels 6"x12"x7", cedar posts 6"x6", 7 pieces roof metal 35', 40 piece 4"x4" angle metal, 2-piece 6"x8" angle metal, 8 standing seam metal roofing 37' long, 6 piece metal cap, 4"x6" metal trim, 2"x4" trim, 4-8" C channel metal pieces, several 8" purlins, pile lumber, several 3"x3" metal trim, 3-2"x4" metal trim, 3-4"x4" metal trim, acoustical or suspended ceiling metal & hanging wire, several long pieces of schedule 40 & 80-4" drain pipe, several stud stiffeners, large lot steel studs-various sizes 16 gauge or smaller, 6-4"x8" angle metal, 4-12" C channel 10', 3-12" C channel 8', 2-exterior doors, steel banding for metal building, 2-rolls black 3/4"x300' roll water line, metal finish trim, 5 galv. flashing 10', cedar fencing boards, 28 slats 1"x4" 8' long, HD door, large lot of insulation in bags, assorted plastic job boxes, metal & paper drywall corners, chain link fence & post, large lot screws & bolts, several hand masters, large lot blue water line, roll 1" backer rod, large lot of paint & RFP glue, 4" drain tile-1 roll, 4 pallets of new 8"x12" concrete blocks, large lot decorated rock, wheels & tires for Dixie Chopper mower, Kenmore front load washer & dryer w/stands, some household furnishings-lawn swing glider, Heatwave LP floor furnace, apartment size refrigerator.

Amish Surrey & Horse Drawn Sleigh

Horse drawn Amish 2 seated surrey w/hydro brakes, 1 horse drawn sleigh, 2 metal 6'x8'x8' storage units-very heavy.

Auctioneers Note: Folks, this is only what I could see at time of listing. There will be more than what is listed by sale day. May be selling in 2 rings for part of the day. Bring a friend and spend the day with us. Will be a large auction. Terms cash or good check: not responsible for theft or accidents. All items must be paid before removal. No Buyers premiums at our auction. All items must sell! **Seller says "sell it all Norman!"**

Owners: Rock & Debra Dirks (816)383-0971

See our website for pictures at roppauctions.com or gpcink.com

Lunch catered by Shooters

conducted by



Ropp Auctions

We bring high \$\$\$ bidders to our sellers.

Auctioneers: Norman Ropp 660-247-1914 • Eli Hostetler 660-247-1914