

Live
Auction

PUBLIC AUCTION

Everything
Goes!

LAND • TRACTORS • PERSONAL PROPERTY

Saturday, October 1, 2022 • 9 a.m.

Note
Starting
Time

Location: 1896 210th St., Corning, Iowa 50841

Directions from the Casey's Store in Corning go west on 6th St. (old Hwy 34) approx 3 miles, 1st place west of Corning Airport. WATCH FOR SIGNS

Property / Land

Beacon Parcel ID#s 3473100, 3475101, 3476100, 3477100

Sec/Twp/Rng 33-72-34 Quincy Twp - Adams County

Brief Legal Descriptions: NE NE (Exc N. of Hwy) Inc Tract

Corning, Iowa, Quincy Twp

E 1/2 SW NE 33-72-34

SE NE 33-72-34, E 1/2 NE SE 33-72-34

Gross Acres 110.41 Selling 110 Acres

AVG CSR2 47.2

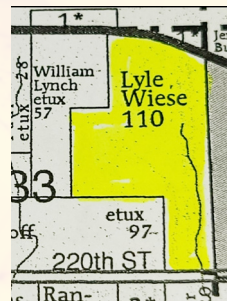
FSA Farm# 3701 Tract: 3056

Current CRP Acres 61.42 with contract expiring 9/30/22

Balance in pasture, timber/recreation. Seller retains final CRP payment. Taxes: \$1,796

Terms/Conditions: Property being sold in one individual tract to the highest bidder. 10% down payment required day of auction with balance due upon closing. Ted Engel with Engel and Maharry Law Office, Corning, Iowa (641-322-3230) will be handling all closing transactions. Closing and possession to be announced. Farm is being sold with NO RESERVE. Sale of the farm is not contingent on buyers securing financing. Todd Crill Auctions is auctioneer only.

Disclaimer: Above printed material is believed to be correct. Buyers should do their own research. Any and all announcements made sale day take precedence over any printed materials. Auction Company is not responsible for misprinted or misinterpreted materials. Auction company not responsible for accidents, thefts or fire.



run; 1981 KTM 495 motorcycle, no run; Towable M&W Dyno; motorized corn sheller on cart; Cushman scooter (no engine); Cub Cadet garden tractor for parts; 500 gal. propane tank; 3 commercial type Singer sewing machines; 3 old builds completely full of ceramic molds; steel building trusses

Tools / Shop Items

Older commercial grade air compressors; AirCo commercial heavy duty AC/DC welder; Somaca surface grinder; cylinder bore machine; Van Norman brake drum machine; Sioux valve grinder/refacer and accessories; Onan gas generator; PFaff Industrial sewing machine; AirCo heavy duty wire welder; kiln; hand forge; heavy duty bench grinder; coolant reclaimer; 53' semi trailer full of Lyle's misc shop items, the above included plus more.

Trucks/Vehicles

Ford 600 Service Truck, custom cab, Onan generator, Venco boom, pretty clean

1950's Studebaker pickup mode E1-1013, pretty complete, no title, shows 24,800 miles.

Guns

Sears Ted Williams .22 rifle; Thompson Center Arms 54 cal black powder; Winchester Model 121 .22 rifle; Bridge Gun Company .410; Thompson Center Encore 209x50 Magnum; Connecticut Valley Arms VS1847 black powder revolver; Norinco 7.62 pistol in box; Taurus Judge .410/45 revolver in box

Tractors / Antique Tractors

(most will run or have run in the last 2 yrs)

- IH 706 Diesel, Cab, NF, Ser#6498
- H Farmall, WF on steel, on rear rubber, will sell with rear steel, 540 PTO, drawbar hitch, ser#290296
- M Farmall, WF, drawbar hitch, clam fenders, 8 rear wheel wts, ser# 295005
- Farmall 706, gas, WF, 2pt w/3pt adapters, 540/1000 PTO, ser# 22389
- Farmall 350 Diesel, ser#5273, NF does not run
- Farmall Super C, NF, ser#174361
- Minneapolis Moline G900, propane, WF, 540/1000 PTO, ser# 32800599
- Minneapolis Moline U302, WF, gas, ser#27600242
- Minneapolis Moline 445, NF, ser#10100834
- Cockshutt 570, Perkins diesel conversion, WF, drawbar hitch, 540 PTO
- Ford 8N, WF, fenders
- John Deere A, NF, styled, elec start, ser#633566
- Michigan Payloader, General Motors diesel engine, model 175 DGM, was completely gone thru several years ago, should run.

Parts Tractors/Tractor Parts

- Farmall Super M diesel, mostly complete
- Styled A John Deere for parts (hand start)
- (2) Farmall M's for parts
- Several Farmall NF
- Aluminum truck body contest to include: mostly Farmall parts, clam fenders, seats, hoods, side panels, grills, gas tanks, manifolds, engine parts.

Farm Equipment

- Bush Hog model 257 7' 3 pt rotary mower
- JI Case 4 bottom pull type plow
- Woods RM 600 3 pt finish mower
- Woodsman No. 211 3 pt buzzsaw
- Homemade 3 pt forklift
- 3 pt blade, pt hyd cherry picker
- IH 540 4 bottom steerable plow
- Oliver 565 4 bottom steerable plow
- 12' 3 pt chisel plow
- White 271 20' tandem wing disc
- John Deere 210, 14' disc
- Several old steel wheel side rakes
- Several running gears
- Massey ? 4 bottom steerable plow
- Truck frame tandem axle steel box wagon
- Several John Deere pull type trip plows
- Several IH pull type trip plows (most were greased and should scour nicely)
- Plenty of misc. scrap

Tractor Wts (rear wheel & suitcase)

15 IH large suitcase; 4 IH small suitcase; 15-20 IH wheel wts; Massey Ferguson rear and suitcase wts; Oliver rear wheel wts; 12-15 Ford #100 suitcase wts.

Additional Items of Interest / Skidloader / Motorcycles

Mustang/OMC 12 Skidloader, runs, w/bucket; (2) PTO driven compressors; Bobcat T3101 golf course mower w/Kohler 18 hp made into tree cutter!; Yamaha Moto 4 - 4 wheeler, no run; 750 CC Honda motorcycle, no



Reldon Konecne Consignment - 402-681-8575

Minneapolis Moline M-670 propane tractor, propane tractor, WF, PS, 3 pt, live hydraulics, runs
Ford NAA Jubilee tractor 3 pt, WF, runs
BMB 5' 3 pt rotary mower; IH 540 4 bottom steerable plow; 2 bottom 3 pt plow; 8' Dearborn 3 pt disc; Dearborn 12-88 2 row planter; 3 pt potato plow; homemade 2 wheel trailer; 3 pt JD 3 bottom plow; 6' IH 3pt blade; 2 bottom Dearborn 3pt plow; small trailer of Minneapolis Moline tractor parts to include: M-670 propane heads, wt brackets, cylinders, hoods, misc. parts, 3 pt. post hole digger

Auctioneer Comments: Lyle was one helluva a mechanic and tractor enthusiast! This is one of those auctions that will have plenty of surprises! Land will sell promptly at 1PM! Lots of shade, portable restroom and lunch on grounds! Note early start time! Hope to see you at the auction. - Todd

Janelle Wiese and the late Lyle Wiese

TODD CRILL
AUCTIONS
Your Estate Auction Specialists

Auction conducted by Todd Crill Auctions, Creston, Iowa

Todd Crill, Auctioneer - 712-621-1453

Auctioneers: Matt Johnston • Nathan Ramsey

Michelle Crill, Auction Coordinator - 641-745-9223

www.toddrillauctions.com or follow us on facebook

PORTABLE RESTROOM • LUNCH ON GROUNDS

Terms: Cash or good check. Mastercard and Visa credit cards welcome.

Auction Company not responsible for accidents, thefts or fire.

IAA
IOWA
Auctioneers Association