

LAND/PERSONAL PROPERTY ESTATE AUCTION

LIVE & ONLINE AUCTION

Saturday, October 5, 2019 • 10 a.m.

2455 Quail Ave., Afton, Iowa 50830

Directions: From Afton Iowa, Go 6 miles south on US Hwy 169 to County Rd. "East St. Ext" Turn south here, this turns into 255th/H45 (blacktop) follow this road 3.8 miles to Quail Ave., turn north, go 1 mile. Watch for signs!

SELLING 2 TRACTS OF LAND

TRACT 1 -- 79 Acres MOL CRP/Pasture
Sec/Twp/Rng: 15-71-29
Legal: 15-71-29 SW-4 NE-4 / SE-4 NE-4 Sand Creek Twp., Union County, Iowa **Farm #6694 Tract# 5555**
County FSA Office: Madison County Farm Service Agency 515-462-4884
Additional Information: Tract 1 - 34.11 acres enrolled in CRP at \$269.41/acre thru 2025. Annual payment \$9,190/yr.
 Balance of this farm in pasture (rented thru 2019) Average CSR2 of 58

TRACT 2
 19.5 Acres MOL to include home, 2 1/2 unattached garage, 45x90 Wick metal building, barn, 10.73 ac farm ground currently planted to Aronia Berries. Balance of this farm in pasture (rented thru 2019). Average CSR2 of 62



CENTURY FARM SELLING

AUCTION METHOD: The Multi-tract auction method will be used. Tract 1 will be auctioned until bidding reaches its highest point, at that time - Tract 2 will then begin being auctioned until bidding reaches its highest point at that time - Tract 1 and 2 will be combined and auctioned as a complete unit. If a higher bid is achieved through the combined effort, then the property will continue to sell to the highest bidder. If a higher bid is not achieved through the combined efforts, then the tracts will revert back to being sold as separate units to their respective highest bidder. This land is being SOLD ABSOLUTE! Auctioneer will determine all incremental bid increases.

TERMS: The winning bidder(s) will be required to pay 10% down and enter into a contract to purchase. Balance will be due within 30-60 days of auction at which time a up to date abstract and warranty deed will be delivered. Dave Jungmann P.C., Greenfield Iowa will be conducting all real estate transactions. Your bidding is not subject to financing! Financing must be arranged prior to the auction!



Tractors / Farm Machinery / Farm Misc.

180 Allis Chalmers Diesel Tractor, wide front, 3 pt., 540 PTO, 18.4x28 rears with spin outs, 4 spd w/2spd powered director trans, 5354 hrs, sells with Westendorf TA 26 loader with bucket tractor and loader are in excellent condition! Ser# 12487 on Tractor (1973); John Deere B Tractor, NF, ID tag missing, factory flat spoke wheels, not running; Value Leader 5' 3 pt baro tiller, near new condition; Massey Ferguson 3 pt sickle mower, 8' bar; Howse model# MH7T4 rotary mower, heavier gear box, 3 pt.; 8 HP transfer pump, near new; 200 gal. water barrel/sprayer, 100 gal plastic barrel; Allis Chalmers front weights; 16' W corn crib (to be removed) 18' tall, galvanized roof; Several small iron piles



Zero Turn / Lawn & Garden Tractors Mowers / Lawn Equip.

John Deere model 2930A commercial 60" zero turn mower, 29 hp professional V-twin engine, ROPS, 1410 hrs, very well maintained! Runs good! Product ID#TC930AP010941; John Deere model 214 garden tractor, 14HP Kohler engine, 48" deck, rear wheel wts, ser#C214J 122709M, should run; John Deere 345 garden tractor, Kawasaki engine ser#FD590U-8504, 48" mulch compatible deck, runs good; (2) Craftsman YT4000 lawn tractors, 24hp Briggs/Stratton platinum engines, 42" decks, both run good; Wards Garden Mark Squire Garden Tractor, Briggs Engine, mower deck, not running; Scotts 3-n-1 mulch, bag, side discharge self propelled push mower, Briggs 6.5 hp Intek engine; John Deere 21" push mower; John Deere model 60 chain saw; (2) McCulloch chain saws; (3) older misc. push mowers and misc. gas engines; Kees-Kom Pak chipper/shredder with 5HP Briggs engine; 10 cu. ft. garden trailer; prize lawn fertilizer spreader; prop spreader; large wheel barrow; 26" AMF Husky snowblower with chains and windguard; 13 50# bags of 4-6-4 medium grade fertilizer; weed eater power blower; Cycle Country 15 gal portable sprayer; Craftsman weed eater; Precision garden seeder

Guns - Ammo - Coins

Remington 12 ga semi auto (Browning Pat); (2) Marlin model 20-A pump .22 rifle (one for parts); Ruger 10/22 semi-auto rifle; Crossman 2200 Magnum air rifle; Crossman model "400" repeater air rifle; Crossman model 1861 Shiloh revolver (pellet revolver); Brick of Western Super X .22 long rifle; 2 boxes Remington high speed Kleenbore; 1 box 12 ga Remington "oo Buck" (US Property) stamped; other misc. ammo; (1) 10 Troy ounce bar of .999 silver; (3) 1921 Morgan Dollars, 1-1890, 1898, 19215; (4) 1922 Peace, (6) 1926; (59) Franklin halves; (58) Walking Liberty Halves; (39) Washington Silver Qu; (11) Kennedy halves; (45) Roosevelt silver dimes; (103) Mercury dimes; (4) Barber dimes; 1827 cent pc; 300-400 wheat pennies; 62, 63, 76, 78 proof sets; partial book US Savings Stamps; (2) Blue Penny books; (26) 1.00 silver certificates, (1) 5.00 silver certificate

Auctioneer Comments: Auction will start promptly at 10AM on Tools/Shop Items then into Antiques/Collectibles. 1PM we will be selling Real Estate, Pickups, Guns, Coins, Tractors. Very large Estate Auction for the late Dean Scherer. Bring your lawn chairs and plan on spending the day with us! Hope to see you at the auction! - Todd.

Appliances

Whirlpool built-in type microwave; Whirlpool Ultra-Ease SxS refrigerator, almond; Maytag elec stove (white)

Pickup / Classic Pickup & Camper / Trailer



1978 Chevrolet Bonanza 20 (3/4 ton) 2WD pickup! 350, automatic, air, cruise, tilt, dual tanks, very original, 2 tone paint, new tires, one owner, shows 9,105 miles!; 1960 GMC K1500 Pickup Truck ser#1502 P N3507B V6, type 305 engine, automatic trans., 84680 original miles, barn find condition, sells with 10' Dreamer slide-in pickup camper has stove, refrig, table, cushions all complete in very original vintage condition! Carry-on 5x8 2 wheel trailer with mesh full tailgate; small homemade trailer

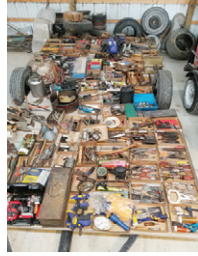


Special Mention

Victory model 10 3 wheel elec scooter, excellent condition; J.M. Berkling and Co. Copenhagen/Denmark Lounge Chair

Tools / Shop Items / Acreage Misc.

Oxygen/Acetylene Torch outfit w/cart; 8" Industrial Bench grinder on-stand; Sears 2 HP portable air compressor; 2 ton portable mower lift; 2 and 3 ton floor jacks; Power Kraft 225 amp arc welder; large bench vice; Rockwell Delta jointer and table 6"; Craftsman 10" table saw; Craftsman turning lathe & tools; Shopmaster scroll saw; Craftsman table top belt sander; Porter Cable 20V lithium cordless drill; air tools to include sander, cutter, chisel, ratchet; Schumacher 10 amp battery charger; Schauer charger; Zephyr 1/2" drill; several elec drills; circular saw; 6 gal shop vac; several work benches; Campbell Hausfeld 1300 psi pressure washer; air tanks; gas cans; S-K and Craftsman ratchet/socket sets; Buffalo 3/4" dr. socket/wrench set; pipe wrenches, vise grips, pliers, hammers, saws, punches, chisels and roughly 50 flats of misc. hand tools; handiman jacks; (60) 10' 2x4's; ext ladder; step ladder; garden hoses; long handle tools; many organizer units



Antiques / Collectibles / Misc.

(2) 10 gal cream cans (Swift & CCC Osceola); brass car horn; (2) road signs; industrial type heater; 1940's or 50' pickup box trailer; (3) bicycles; (2) Harley Davidson riding kidney belts (old); lots of photographs; license plates; yard sticks; wood advertising close hangers; several vintage fishing lures, poles, reels, and tackle; Johnson 10 hp outboard motor; 17' Starcraft boat with 90 hp Starlite motor and trailer (needs work); cast iron bed frame; Ingento paper cutter; trunk; humpback trunk; blue and misc jars; records; some misc lamps; furniture; outdoor furniture; clothes stamper; Keystone 8mm projector; file cabinets; fire cabinet; Royal typewriter; old house screens; 2 oil lamps; cast iron hog pan; grader blade; antique post vise on stump; several feet native lumber; old golf clubs; fly rods; picnic baskets; cast iron skillets; yard jarts; Coleman cookstove; misc auto/car parts, belts; R-12 refrigerator; 18 wood cabinets full of auto parts; small engine parts; new and hold misc hardware; 2 metal school lockers; several flexible flyer sleds; 2 JD toy tractors; Foden dinky supertoy truck; Hubley Truck; Roy Rogers horseshoe set; brass fire extinguisher; Fanner 50 toy gun set.

The late Dean Scherer Estate

Auction conducted by Todd Crill Auctions, Creston, Iowa

Todd Crill, Auctioneer - 712-621-1453

Auctioneers: Matt Johnston • Nathan Ramsey

Michelle Crill, Auction Coordinator - 641-745-9223

www.toddcrillauctions.com or follow us on facebook

PORTABLE RESTROOM • LUNCH BY CINDY'S KITCHEN

Terms: Cash or good check. Mastercard and Visa credit cards welcome.

Live and Online Bidding at [proxibid](http://proxibid.com) www.proxibid.com/toddcrillauctions

TODD CRILL AUCTIONS
 Your Estate Auction Specialists

