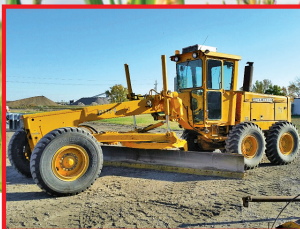


OCTOBER

# AUCTION

**OPENS:** Wednesday, Oct. 7 / **CLOSES:** Wednesday, Oct. 14

**TIMED ONLINE**  
**Monthly**  
 Brought to you by SteffesGroup.com



## TRACTORS

**1997 NH Ford 8770**, MFWD, Super Steer, CAH, 4 hyd., Megaflo, 3 pt., PTO, radar, (22) front weights, 380/90R46 duals, 380/85R30 tires, 9,821 hrs., S/ND412443  
**Case 1370**, 3 spd. powershift, 2 hyd., PTO, 20.8-38 duals, shows 6,952 hrs., bad motor, S/N8711298

## SKID STEER LOADERS & ATTACH.

**NH L553 skid steer loader**, 72" bucket w/quick tach, 6,683 hrs.  
**JD 385 skid steer loader**, diesel, manual quick tach, material & manure bucket, New tires, 1,900 hrs.  
**(2) 10-16.5 skid steer tires w/8-hole rims**, 50%  
**(2) 12-16.5 skid steer tires w/6-hole rims**  
**(2) Forerunner SKS-1 12-16.5 skid steer loader tires**, 12 ply, rim guard, Super Traction, high stability

**2015 Hawz tree puller**, hyd. jaws, heavy duty skid steer attachment, New  
**2015 Hawz rock grapple**, 78" rock bucket w/grapple, heavy duty, 3" spacing, cylinder shields, New  
**2015 Hawz rock grapple**, 74" rock bucket w/grapple, heavy duty, 3" spacing, cylinder shields, New

## GPS EQUIPMENT

**JD 2600 monitor**, auto steer unlocked, w/data card

**AgLeader auto steer system**, 6500 receiver, WAAS signal, Versa display, RTK capable, foot pedal, wiring kit for JD 9X20 tractor, steer command controller kit

**JD brown box display**  
**Harness for JD ATU**

## HARVEST EQUIPMENT

**JD 7700**, CAH, turbo hydro, rock trap, chopper, hopper ext., heavy duty rear axle, 18.4-42 tires w/Kirchner duals on 30" rows

**2009 JD 612C StalkMaster chopping corn head**, 12x30", hyd. deck plates, knife rolls, AHH, RowSense, outer gathering ext., stubble lights

**2008 JD 608C Stalkmaster chopping corn head**, 8x30", hyd. deck plates, knife rolls, AHH, outer gathering ext., stubble lights

**2008 Geringhoff Northstar 1800/B corn head**, 18x22", level sensors, Cat/Lexion hookups, hyd. deck plates, S/N721681822/B

**2008 JD 893 corn head**, AHH, knife rolls, single pt. hookup, poly snouts, outer gathering extensions, center auger cover, New chains & sprockets 300 acres ago, S/NH00893X685702

**JD 224 flex head**, 24", poly on skid plates, reel needs work, S/N626357

**MF 1859 head**, 24", w/9" pans  
**MF 1859 head**, 20", w/9" pans

## GRAIN CARTS

**Brent GP974 grain cart**, light foot undercarriage, 16" corner auger, S/N974517

**Unverferth 650 grain cart**, corner auger

## TILLAGE EQUIPMENT

**Case-IH 4900 field cultivator**, 44", walking tandems all around, 7" sweeps, w/Summers 3-bar harrow

**JD 680 chisel plow**, 27", tandems across, single pt. depth, John Blue NH3 applicator, rear hitch

**Landoll 6230 rock flex disc**, 36", New 24" front blades, 23-1/4" rear blades, rear harrow, front gauge wheels, hyd. front to rear leveling, S/N62D0700209

**Krause 1928 disc**, 26", hyd. fold wing, rock cushion, single tires on wings, S/N93215

**DMI 730B Ecolo-Tiger disc ripper**, 7 shank, rear leveler

**Summers Super Coulter Plus**, 40", hyd. adjust, Summers 104 3-bar harrow, 21" straight blades on front, 21" 13-wave rear blades, S/NE0629

**JD 2800 plow**, 7 bottom, coulters, on land & variable width

**King Kutter Middlebuster single shank ripper**, 3 pt.

**Category 1 mounted disc**, 6', 3 pt.

**Category 1 mounted cultivator**, 5', 3 pt., S-lines

**King Kutter C-tine cultivator**

## SEMI TRACTOR & TRUCKS

**1993 Kenworth T800**, day cab, N14 Cummins, Eaton Fuller 9 spd., air plate, air ride seat & susp., diff lock full stainless fenders, dual exhaust, 204" WB, 492,074 actual miles, just out of the shop, New Cummins ECM #6 injector, replaced wheel seals

**1980 GMC 7000 twin screw**, 427 gas, 5&4 spd., 19' box w/hoist, 3 pc. endgate & roll tarp, \$14,000 in repairs, rebuilt trans. & aux. trans., diff lock, & power divider, shows 79,626 miles

**1973 GMC 6500 tag tandem w/lifting tag**, 366 WB, 5&2 spd., 19' box, twin post hoist, plumbed for drill fill, shows 53,500 miles, 9:00-20 tires

**1987 Ford L8000 single axle**, 3-1/2 ton, Ford diesel, 6 spd., 8x12 flatbed, wood floor, 2 hyd., air brakes, shows 268,342 miles

**1973 Chevrolet C60 single axle**, gas, 5&2 spd., Schweiger bed w/sides & extensions, twin rear hoist, 9:00-20 tires

**2002 GMC 3500 single axle service unit**, 5.7 liter gas, automatic, A/C, 12-1/2" van body, side door, roll-up back door, shows 154,688 miles, DOT'd for 2015, van body has been tweaked

## PICKUPS

**1998 Chevrolet**, 1 ton, crew cab, 6.5 diesel, 5 spd. manual, electric brake control, AM/FM, tilt wheel, no carpet/work truck, rubber bed mat, 8' bed, receiver hitch, (7) pin electrical trailer connector, 217,782 miles, engine & clutch assembly replaced at 123,194 miles at Smith Motors in Wahpeton

**1998 Chevrolet 2500**, 3/4 ton, reg. cab, long box, V8 Vortec, gas, automatic, 4WD, 220,255 miles

**1997 Chevrolet**, 1/2 ton, ext. cab, long box, Vortec 5.7 liter, 4WD, A/C, power driver's seat, power windows & locks, AM/FM w/CD Player, remote power mirrors, bed liner, tinted rear windows, 259,947 miles, not running, service records available

**1992 Chevrolet**, 1/2 ton, ext. cab, short box, 5.7 liter gas, 4WD, power windows & locks, A/C, AM/FM stereo w/equalizer, 40/60 front bench seat, 272,529 miles, service records available, not running

**1990 Ford F450 XL**, 7.3 diesel, dual fuel tanks, 5 spd. manual, A/C, AM/FM, LaHass utility body w/(7) compartments, Duralift DFOL-41 man basket, S/NA1905, bottom of bucket to ground, 36", side reach, 31", fuel injection pump is bad, service records available

**1990 Chevrolet 3500**, reg. cab, 454, 4 spd. manual, 4WD, 8' box, tow pkg., 218,840 miles

**1962 IHC Scout 80**, 2 door, 4WD, lock out hubs, removable top, 4 cyl., 3 spd. manual, 2 spd. transfer case, shows 91,909 miles, restorable, missing seats, No Title, Bill of Sale Only

## TRAILERS

**2003 Great Dane reefer trailer**, 53', Thermo King unit w/12,801 hrs., air ride, sliding axles, aluminum floor

**Industrias America 440 tandem axle header trailer**, 40'

**2006 Wabasso header trailer**  
**Car trailer**, 18'x80" between wheel wells, ramps in rear, (3) stabilizer jacks, front & rear 2-5/16 ball hitch, safety chains

## SPRAYERS

**Sprayer**, 30' boom, 3 pt., PTO pump, (2) tanks

**Skid sprayer**, 12' booms, 45 gal. poly tank, 12v 3.8 gpm high flow pump

**SprayTech sprayer**, 3 pt., 9' booms, 40 gal. poly tank, 12v pump  
**Jacto J400 cannon sprayer**, 3 pt., 540 PTO, S/N06407G4

## NH3 EQUIPMENT

**(2) NH3 nitrolators**  
**MicroTrak 3400 NH3 heat exchanger w/MicroTrak 3405 auto rate controller & radar**  
**County Line landscape rake**, 6', 3 pt.

## GRAIN BINS & GRAIN HANDLING EQUIPMENT

**10,000 bu. steel grain bin**, approx. 30' diameter, 18' side walls, aeration floor, 10 hp. DMC single phase aeration motor, bin unloading auger w/motor, side ladder

**(2) Co-op 5,000 bu. steel grain bins**, approx. 24' diameter, 16' side walls  
**(5) 3,000 bu. steel grain bins**, approx. 18' diameter, 16' side walls

**Farm Fan AB250 grain dryer**, propane, single phase, 250 bu./hr.  
**(10) Superior high speed centrifugal fans**, 15 hp. WEG motor, 230v, 3 phase, New

**(10) Superior high speed centrifugal fans**, 15 hp. Baldor motor, 230v, single phase, New

**Dryer fan**, 10 hp., w/burner  
**(3) screw-in grain aeration tubes**

## CRAWLER LOADER BACKHOE

**JD 555B crawler loader backhoe**, 4-in-1 6' loader bucket, 24" backhoe bucket, 21" street tracks, backhoe S/NT09300X052126, actual hrs. unknown, machine was gone through 3 yrs. ago, S/NT055BX729697

## MOTOR GRADER & SWEEPER

**1980 JD 770A articulating motor grader**, cab w/heat, powershift, 14' moldboard, 12' snow wing, shows 826 hrs., S/N8920

**Sweepster WSP24 self-propelled walk-behind sweeper**, 6.5 hp. B&S, manual adj. angle, 24" brush, 1 hr. of use

## SCRAPERS & ROTARY DITCHER

**JD 760A paddle scraper**, cab w/heat, 8 spd. powershift, 7,150 hrs., rebuilt trans., complete service & refurbish at Fargo Parts & Service  
**Letourneau converted hyd. pull-type scraper**, 10 yd., hyd. push-off, good large tires Land Pride DT55 rotary ditcher, 3 pt., 540 PTO, 20" impeller, hyd. deflector spout, like new, S/N654773

## OTHER EQUIPMENT

**Degelman RD320 rock digger**, all hydraulic, S/N1142  
**JD rotary hoe**, 20', 3 pt., front gauge wheels, center debris shield  
**Teem 18' seed tender**, 2 compartment, 10" belted conveyor on bottom & out the back, open top, no motor  
**Cell-Tech seed inoculator**, 30 gal. poly cone tank w/12v pump on cart

**Vibrating hammer for backhoe**  
**Pair of pallet forks**, 48"  
**Header mover attachment for forklift**  
**Heavy duty posthole digger**, 3 pt., PTO, New, post hole digger w/9' & 12" bit  
**Ground Hog HD99 engine drive posthole auger**, w/(4) various bit sizes & extension, S/N510113

**Drill carrier**, 30", hyd. lift

**Thurman truck scale**, 6000 lb., 30' platform

**IHC 2' rear rototiller**

**DR trimmer/mower**, 3 pt., 540 PTO, Cat 1, spring loaded trimmer arm

**Antique 2-wheel grader w/8' moldboard**  
**Speeco Cat 2 quick hitch**, 3 pt.  
**4' drawbar w/4x8 section harrow**  
**MacDon finger reel**, 25'

## SNOWBLOWERS

**Erskine 1080R snowblower**, 108", 3 pt. Lundell snowblower, 8', 2 stage

**IHC 80 snowblower**, 86", 3 pt., 2 stage  
**2008 Toro 826LE Power Max walk-behind snowblower**, 8 hp. electric, 26", Quick Stick one-hand chute control  
**JD TR-27 walk-behind snowblower**, 8 hp. electric start, 27" cut

## BUILDINGS

**Behlen steel building**, 50'x155', (2) 10' sliding doors on north end, (2) 12' sliding doors on south end, (1) walk-in door, electrical panel

**Pole building**, 50'x155', wood frame, 10' walls, steel siding, 10' overhead door, 16' overhead door w/electric opener

**Wood frame building**, 70'x75', steel interior & exterior, (2) 16' overhead doors, (2) 14' sliding doors, shelving, electrical panel

**Barn**, 40'x40', steel siding

**Barn**, 25'x50'

**Building**, 25'x40', steel siding, 10' walls, (2) 5' sliding doors

**Steel sided building**, 20'x40'  
**Steel storage shed**, 8'x8'x9'

## FIREARMS

**H&R M1 Garand CMP**, 30.06  
**Para-Ordnance Model 1911 Expert Commander**, .45 ACP, 4.25" barrel  
**Rock Island Army 1911-A1FS Remington 700 ADL**, 7 mm  
**Boito**, 12 ga., over/under, dual trigger  
**Remington Model 11**, 12 ga.  
**Winchester 370**, 16 ga., single shot  
**Thompson Center Renegade Winchester Model 190**, .22 S, L, LR  
**Winchester 150**, .22 S, L, LR

## LIVESTOCK EQUIPMENT & LARGE ASSORTMENT OF STEEL GATES

## STATIONARY ENGINES

## GENERATORS, LIGHT PLANTS

## SHOP EQUIPMENT

## TANKS, TIRES, PARTS

## MISC. & INVENTORY ITEMS

**Auctioneers & Clerk: Steffes Group, Inc. SteffesGroup.com**

**West Fargo, ND** | **Grand Forks, ND** | **Litchfield, MN** | **Mt. Pleasant, IA** | **Ames, IA** | **Sioux Falls, SD**  
**701.237.9173** | **701.203.8400** | **320.693.9371** | **319.385.2000** | **515.432.6000** | **605.271.7730**

For consignor information & location, complete terms, full lot listing & photos visit SteffesGroup.com

