

VIRTUAL ONLINE



# LEE COUNTY, IOWA LAND AUCTION

TUESDAY, NOVEMBER 1, 2022 AT 10:00 AM<sup>CDT</sup>

335 ACRES± (SUBJECT TO SURVEY) • 4 TRACTS



**OPEN HOUSE: WED., OCT. 19<sup>TH</sup> • 4:00 - 5:00 PM**

The Wilson farm is located in Sections 15 & 16, Pleasant Ridge Township, Lee County, Iowa. 4 miles north of West Point, Iowa (20 miles southeast of Mt. Pleasant, Iowa).

*Mark your calendars now for this upcoming Lee County, Iowa land auction. This farm offers highly productive tillable farmland and includes hardwood timber areas featuring attractive recreational acreage. Tract 4 is improved with a single-story 3-bedroom country home, as well as a 40' x 60' machinery building, a 50' x 72' storage building and other usable structures. We look forward to your participation in this outstanding Southeast, Iowa land auction.*

## DALE K. WILSON ESTATE

PILOT GROVE SAVINGS BANK - EXECUTOR FOR THE ESTATE

TED VONDERHAAR | PRESIDENT &amp; CEO

NICHOLE L. NAGEL | ASSISTANT VICE PRESIDENT/TRUST OFFICER

Representing Attorney:

Greg Johnson | Law Office of Gregory A. Johnson  
516 7th Street, Fort Madison, Iowa | (319) 372-2532

Auction Managers: Pat Steffensmeier (319) 470-5284

Jim Huff (319) 931-9292 &amp; Jeff Hoyer (319) 759-4320

VIRTUAL ONLINE



# HENRY COUNTY, IOWA LAND AUCTION

TUESDAY, NOVEMBER 1, 2022 AT 1:00 PM<sup>CDT</sup>

240 ACRES± (SUBJECT TO SURVEY) • 5 TRACTS



**OPEN HOUSE: WED., OCT. 19<sup>TH</sup> • 4:00 - 5:00 PM**

The Clark Estate is located in Sections 25 & 26, Center Township and Sections 29 & 30, New London Township, Henry County, IA. Tracts 1, 2, 3 & 5 are generally located approximately 1 mile southeast of Mt. Pleasant, IA and Tract 4 is generally located 3 miles southeast of Mt. Pleasant, IA.

*Make plans now to participate in this upcoming Henry County, IA land and acreage auction. The Clark farms offer highly productive tillable farmland and improved pastureland. There are several small tracts ideal for new home building sites as well as a 2 bedroom ranch-style home situated on approximately 5 acres. All tracts are conveniently located just minutes outside of Mt. Pleasant, IA. This is an auction that you will not want to miss!*

## JOHN L. CLARK ESTATE GREGORY KROGMEIER - EXECUTOR

Representing Attorney:

Paul A. Miller | Miller Law Office  
119 N Court, Fairfield, Iowa 52556 | (641) 472-5049

Auction Managers:

Jeff Hoyer (319) 759-4320 &amp; Jim Huff (319) 931-9292

VIRTUAL ONLINE



# APPANOOSE COUNTY, IOWA REAL ESTATE AUCTION

WEDNESDAY, NOVEMBER 2, 2022 AT 10:00 AM<sup>CDT</sup>

11.88 ACRES± • 1 TRACT



**OPEN HOUSE: TUES., OCT. 18<sup>TH</sup> • 4:00 - 5:00 PM**

The Wendland Property is located in Section 33, Bellair Township, Appanoose County, Iowa. (3 miles west of Centerville, Iowa.)

*Mark your calendars now for this upcoming Appanoose County, Iowa real estate auction for the Wendland Family. This highly improved property includes a 3 bedroom, 2 bath, ranch style home that features an attached garage and a very nice deck. Other improvements include a 50' x 100' utility building that was built in 2017 and a 50' x 100' utility building that was built in 2004. This building housed the Wendco Body Crafters and is fully insulated, has a concrete floor and includes several offices. If you are wanting to start your own business or looking for a place to store your collector cars or tractors, we urge you to take a look at this outstanding property.*

*Also selling business-related items and personal property through timed online auction at 11:00 AM. Highlights to include an Ameri-Cure paint booth, tools and collector cars in various stages of restoration. Full listing available online.*

## JEFF WENDLAND ESTATE LORRAINE WENDLAND

Representing Attorney:

Thomas L. Anders | Anders Law Office  
508 Drake Ave, Centerville, Iowa | (641) 856-6088

Auction Manager: John Probasco (641) 856-7355

VIRTUAL ONLINE



# HENRY COUNTY, IOWA LAND AUCTION

THURSDAY, NOVEMBER 3, 2022 AT 10:00 AM<sup>CDT</sup>

78 ACRES± (SUBJECT TO SURVEY) • 1 TRACT

The Myers Trust Farm is located in Section 22, Canaan Township, Henry County, Iowa. 2 miles southwest of Mt. Union, Iowa or 6 miles northeast of Mt. Pleasant, Iowa.

*Mark your calendars now for this fast-approaching Henry County, Iowa land auction that offers highly productive tillable farmland. It includes very productive Mahaska, Otley and Tainter soils which boasts a CSR2 of 86.2! We look forward to your participation in this land auction that is located in Canaan Township, one of the most productive townships in America.*

## THOMAS I. MYERS TRUST MARY SAKOWSKI - TRUSTEE

Representing Attorney:

Michael C. Vance | Vance Law Office  
101 N. Jefferson St., Mount Pleasant, IA | (319) 385-3736

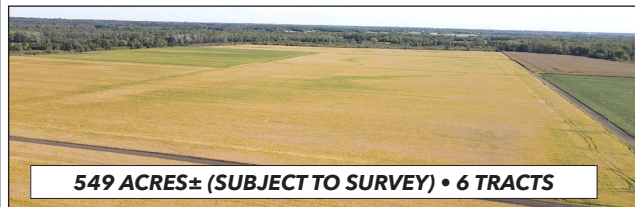
Auction Managers:

Jim Huff (319) 931-9292 &amp; Jeff Hoyer (319) 759-4320

VIRTUAL ONLINE



# LIVINGSTON COUNTY, MISSOURI LAND AUCTION

THURSDAY, NOVEMBER 3, 2022 AT 11:00 AM<sup>CDT</sup>

549 ACRES± (SUBJECT TO SURVEY) • 6 TRACTS

The farm is located approximately 9 miles west of Chillicothe in Sections 31 & 32, T58N•R24W & Section 6, T57N•R24W, Jackson Township, Livingston County, Missouri.

- ✓ **HIGHLY PRODUCTIVE TILLABLE CROPLAND!**
- ✓ **VERY WELL-MAINTAINED FARM!**
- ✓ **NEARLY 100% TILLABLE!**

## OSCAR COOKE TRUST

Attorney: Keith Schieber | Ferguson & Schieber Law Firm  
1009-D W St Maartens Dr., St Joseph, MO | (816) 390-8800

Title Work: Professional Land Title Corp.

113 East Brooks Street, Brookfield, MO 64628 | (660) 258-3125

Auction Managers:

Bill Fretwell (660) 341-7735 &amp; Jennifer Wood (217) 257-8812

# CONSIDERING AN AUCTION?

## NOW BOOKING WINTER '22/'23 AUCTIONS



# SULLIVAN AUCTIONEERS, LLC

## CONTACT US TODAY

(844) 847-2161

WWW.SULLIVANAUCTIONEERS.COM

License #44400107