

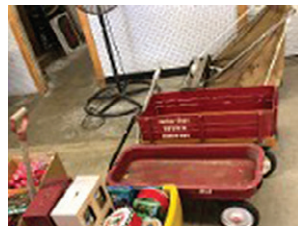
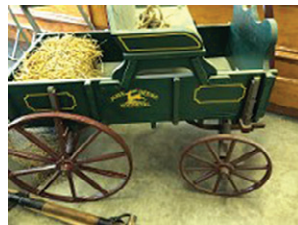
ESTATE AUCTION

Sunday, October 28th • 10:00 AM

202 West Main Street • Garwin, Iowa 50632

Selling The Estate of Mr. Ray Steveson

A life long resident of Tama and Marshal County. Ray was an avid Auction attendee.



Old Radios

GE, Air line, 2 Atwater Kents, Grosley, Zeniths, Westing house, Airline, Aladdin table top radio, 11 Zenith wood case radios, Coronado, Melrose, Airline, plus many more old.

8' glass display cabinet, several misc Crocks

3 very old Cuckoo clocks, 10 old mantel clocks, 2 from Gilbert clock co., Seth Thomas, Regulator clock, Centurion 35 day clock.

Fender J.B. player elec guitar, Gibson elec model Les Paul serial # 808z1550, Gibson elec serial #8-2934, Gretch elec Chet Atkins Tennessee, Starcaster & Carlos guitar, Fender precision base #360891, Prairie banjo, encore banjo, Budweiser 8 horse hitch clock, 2 old wall phones, 2 round piano stools w/glass ball feet, Fairbanks table scale, Master Tone Victrola, Duncan Phyfe table, 4 Oak straight back chairs, 2 Antique rockers, 2-door glass bookcase, several ERTL model tractors, cars, trucks, 3 wheel bike plus several other bikes, Red wagon.

Cub Cadet LT1046 lawn tractor w/grass bagger, John Deere wood wagon, Gas weedeater, pull behind thatcher, John Deere windmill, Scotts seeder, shovels, rakes, broom, plus other misc items.

Sale to be held at DD Auction Center, Garwin IA

Auctioneers: Dennis Dostal and Rollie Graham

more information call



**Graham
Auction Service**

Auctioneer: Rollie Graham

OFFICE 515-685-3144 CELL-515-707-4269

Toll free 1-866-685-3144

Like us on Facebook

www.grahamauction.com

