

# ESTATE AUCTION

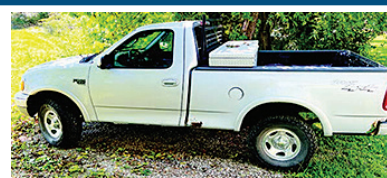
Saturday, October 29, 2022 • 9 am

The Late  
Bill Mantlo

924 SE 45th St., Laredo, MO 64652

Directions: From Trenton, MO go east on Hwy 6 to Hwy E, turn right on E and travel south and east through Laredo, MO. From Laredo, go east on E for 2 miles to 45th St., turn right and go south to first house on right side.

Watch for Auction Signs posted sale day!



**TRACTOR - MACHINERY - TRUCKS - UTV:** Ford 8N tractor (runs really good), 3 pt, really good rubber; Bushhog RD 5' brush cutter (same as new); IH drill w/seed boxes, pull type; Viking hammer mill, pull type; 2R pull type corn planter; pull type single disc; (2) front tractor tires & rims; King Kutter 7' rear 3 pt blade (near new); 1 section harrow; J.D. Model 37 pull type 9' sickle mower; Honda 4x2 chuck wagon 340cc UTV, hard top & windshield w/dump bed (really good unit); 2003 Ford F150 XL Sport 4x4, approx 170,000 miles, auto w/air, single cab short bed, good rubber & metal toolbox; (6) rear tractor tires 14-00-24; 65-gal sprayer tank (brand new).

**ERTL TOY DIECAST TRACTORS & FARM MACHINERY:** Approx 50 Ertl diecast toy tractors & farm machinery including Oliver, IH, Farmall, AC, Cockshutt, John Deere, Case, Caterpillar, Ford 8N, White, 2006 IA-FFA-special edition Oliver XO-121 tractor in box. Most tractors are in orig boxes (a really nice collection). Look at website for pictures.

**ANTIQUES - PRIMITIVES - COLLECTIBLES:** Old oil lamps; crock butter churn, 2 gal; brass bladed fan; several belt buckles; Cameo; 1 gal glass jar butter churn; 5 gal western crock; 6 gal crock w/bails; 10 gal stone crock; 8 gal stone crock; large lot of pocket knives (nice collection); folding cowboy utensil case of folding rules; (4) wooden nail keg; several childrens sleds; wooden fish trap; (3) wooden quilt ladders; milk strainer; (4) cast iron sewing machine bases; draw knives; LR block pulleys; galvanized wash tub; hay knives; old doors; tricycle & metal trailer, 2-wheel; Deering cast iron implement seat; cow kickers; platform scales; metal kerosene can; Radio Flyer wagon; several hand crank coffee grinders; 2 qt oil jars w/tin spouts; dutch oven w/lid, cast iron; Mason glass jar, NOV 30 1858 w/shaker top, green color; alum drinking glasses, random colors; hickory knife block set; Singer sewing machine glass oil bottle (nice); adv ice picks; several glass coffee jars; large lot new burlap bags w/adv (nice); wooden carpenters tool box; tobacco grinder, James Haven Co 1867 (really nice); pitcher pump; 5 gal cream can; tin potato chip adv tin; lightning rod stand; old oak grocery cash drawer; Quaker Oats adv tin; old wooden toys; cast iron pot; large lot of cast iron pots & kettle skillets & much more; leg hold traps; hay hooks; (2) ice hand saws; several 10 gal cream cans; enamelware of various kinds; cast iron footed pot w/lid & bail; Zorro tin lunch pail; (2) powder horns; antique meat cleaver (really nice); large 12" cast iron dutch oven w/bail; (2) cowboy enamel coffeepots (nice); stamp collection; enamel dipper; old cracker tin; cow hobbles; (2) galv milk crates, Chillicothe, MO adv; wooden cigarette storage box; Daisy square #80 glass butter churn (excellent); approximately 12 stone 1 & 2 gal crock jugs; beekeeper hut & beekeeping equipment & smoker; cast iron ice tong; milk bucket; cream separator stand; various hand crank coffee grinders; (3) chicken coops; kerosene 4 burner kitchen stove; several 2-man saws; round grind stone; egg scales; double wash tubs & stands; bubble gum machine, not very big; a very large lot of marbles, some clay & shooters, a wonderful collection!; Red Wing crock bowl; Ward's combination safe w/comb & The Wehrle Safe Co. comb safe, both work really good; Davidson large comb safe; kitchen cupboard w/flower bin & enamel top; China hutch; adv bullet pencils; dog cast iron nutcracker; hosiery washboard; bisque dolls; Laredo plug tobacco; copper boiler; salesman sample sad irons; Atlas jar coin bank; Jolly Joe coin bank; rain gauge adv Krehbiel's & Ron McHargue Milk Hauling; red, white & blue marbles; Win adv box; McCoy brown jar; Buttercup churn mixer, 1 qt; stone crock pitcher; several pcs of Jewel teaware, pitcher, bowls & various others; Aunt Jemima cookie jar; bear & red curl maid cookie jar; oak china hutch; (3) key wind mantle clocks; hand crank stone knife sharpener; oak secretary; leather razor strap; crock chicken waterer; stone crock water jug; (10) western stone crocks, also 2 gal; 8 gal Red Wing crocks; #10 Red Wing water jug; Laredo, MO City Fair ad in frame, 1952; (2) toy model jets; metal concrete truck; old quilt; much more in this section too numerous to list; metal ammo box.

**SHOP & HAND TOOLS - LAWN & GARDEN:** New 110 digital window air conditioner; Craftsman radial arm saw on stand; 2-wheel grinder bench top model; Chicago bench top model drill press; Steel drain tape; wooden block plane; Craftsman 10" table saw; Craftsman 12" bandsaw on factory stand; 6" bench vise; hyd bottle jack; toolboxes; battery chargers, 12V Schumacher; 3/4" drive socket set; Coleman powermate magnaforce 60 gal upright air compressor, excellent; elec air compressor; handyman jacks; shovel, rakes, forks & hoes; antifreeze; 16' alum ladder; 110V elec fence; Tec post driver; Parmak elec fence; new oil filters; Troy Bilt rear tine tiller; 32' alum ext ladder; Craftsman YS4500 riding 46" cut mower w/B&G 21HP motor; air impacts; air hose; block & tackle; Craftsman 2HP router; scroll saw on stand; large metal toolbox; (2) 6 gal shop vacs; ohm testers; c-clamps; furniture clamps; screwdrivers, chisels, punches, hammers, & much more too numerous to list; drill bits; 10 gal 4-wheeler spray tank; Black+Decker workmate stand; Craftsman 10" table saw; Delta 12" planer (elec); jointer planer; router table on factory stand; Craftsman 1HP router & table; squirrel cage fan on stand; alum snatch block pulley; 3 pt center link; wheelbarrow; air pig; large lot elec alum wire; yard roller; (2) scare away boom boom machine; metal shop cabinet; (2) rabbit & chick hutches; 1/2" Craftsman socket set; 16' Warner fiberglass ext ladder; Stanley hand plane; alum walk board; several wooden stepladders; end gate seeder; plastic truck toolbox; acetylene cutting torch, complete set w/cart. There are many, many more shop & hand tools not listed too numerous to list. Several 4' levels; alum 4' square.

**GLASSWARE & COLLECTIBLES & MISCELLANEOUS:** Large lot of wooden kitchen utensils; tan & green enamelware; apple baskets; wooden nail keg (exc cond); milk bottles; CorningWare cookware; Hall crockware; Victoria food mill; clear cookware & bakeware; large roaster pan; Hamilton Beach crock pot; pressure canner 23 qt (new); large lot of canning jars; red enamel stockpot; Pyrex bowls; loaf pan; wooden rolling pins; pink depression glass; green depression glass; Fenton collector glass, several pcs; blue & white hen on nest; salesman sample seeder; carnival glass; blue footed covered pin holder; Kraft grape jelly jar, bear shape; blue sapphire server; salesman sample green crock bowl; small butter dish; jade glass duck; (2) McCoy wishing well; box car coffee metal round tin advertisement; Sunshine Coffee jar; Mason 1/2 gal jar, pat NOV 30 1858; large lot cook books; salt & pepper shakers; marble glass rolling pins; Pyrex refrigerator dishes; pink & blue banded bowl, USA; hoot owl glass bank; cut crystal clear glass; Precious Moments figurines; arrow chips in jar; 3-footed red glass dish; wooden orchard ladder; (2) chicken transport cages; hen nesting boxes; J.D. wagon seat; several hog troughs; (2) California mixing bowls; red & white Pyrex cookware; Jewel tea, several pcs; much more in this section too numerous to list!

**HUNTING & FISHING & MISC:** 270 cal ammo; 243 cal ammo; 20 ga shotgun ammo; Indian artifacts, stones; 16 ga shotgun ammo; 12 ga ammo; (6) boxes .22 cal ammo; Daisy BB gun & air pellet gun; fly fishing rods & reels; fishing supplies; shotgun ammo reloader w/powder & shot; fish cooker on stand; minnow trap; fish trap; tree stand seat warmer; Mr. Heater LP heater for tree stand; pop up hunting blind; outers varmint rifle rest; family dome tent; Winchester ammo box; binoculars; 100 cal canon balls; (2) hunting tree stands.

**HOUSEHOLD FURNITURE & APPLIANCES:** Frigidaire chest type small size freezer; upright Crosley refrigerator w/ice maker; China hutch, 3 drawers & 6 doors; Maytag elec washer & dryer; Frigidaire 2-dr refrigerator w/ice maker & water in door, 1 yr old; small bookcase; oak buffet; ladies roltop desk; oak dresser, 5 drawers w/mirror; 5-drawer chest of drawers; white kitchen cabinet, 2 drs, 1 drawer; small metal cabinet; more more in this category that is not listed!

Representative: Keith Mantlo

See our website for more pictures at [RoppAuctions.com](http://RoppAuctions.com)

**AUCTIONEER'S NOTE:** Mr. Mantlo was known far and wide as an avid collector of many traits. This will be a large auction. Please Bring a Friend!



Power House  
Food Catering

Conducted by

**Ropp Auctions**

Porta Pots  
Available



**Auctioneers: Norman Ropp (660.247.1914) & Richard Yoder**

Any and all statements made sale day take precedence over any printed material. Not responsible for accidents.