



Duane Kistler Estate Auction

October 31st, 2020 9:00AM
2512 250th St., Osceola, IA 50213



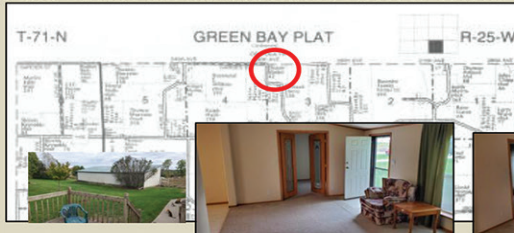
Best Driving Directions: South of Osceola, Iowa on US Hwy 69, 4 miles to Elk Street, then 2 1/4 miles East to 250th Street, then North 1 mile



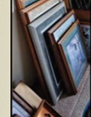
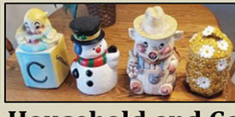
Real Estate: At 9:00 AM Sharp to sell onsite in 2 parcels

Parcel #1 - 10.1 acres m/l, in Green Bay Township, Section 3, 71-25 NW NW. The home measures 68'x28' with a single car attached garage. This is a 3 bedroom/2 bath home with private study/office, open kitchen/dining room, den and living room. The master bedroom suite features a corner tub, walk in shower, sink and vanity. There is a full walk in closet the width of the bedroom. Other features of this well maintained acreage are a 30x60' Morton building (John Deere green) a 12x16 matching building on skids, and an open front building with several pens with a small coral with loading and working area on south side.

Parcel #2 - 105 acres m/l, contiguous with parcel 1, in Green Bay Township, Section 3 and Osceola Township, Section 34. Currently, 86.7 acres of this parcel is enrolled in the CRP program set to expire in 2023 paying \$211.89 per acre. Balance of this parcel features a small pond surrounded by woods and wildlife habitat and fenced off for livestock. **For real estate showing contact auction company.**



Attorney for the estate is Mason McCoy, Attorney at Law. Terms: 10% down the day of auction payable to the Reynoldson VanWerden Trust Account for both parcel 1 and parcel 2. Balance and possession will be due in 30-45 days at closing. A 5% buyer premium will be added to the hammer price at closing. Buyers are responsible for their own inspection and due diligence on the property. No liabilities are assumed by sellers or the auction company. Property to be sold as is where is with no warrants expressed or implied. The property will not be sold contingent on the buyer obtaining financing. All financial arrangements must be made prior to the auction. Not responsible for accident or inadvertent errors in advertising. Announcements made sale day take precedence over any and all printed materials.

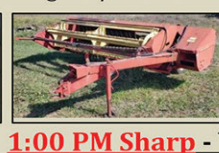
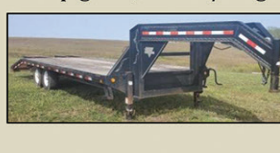


10:00 AM Household and Collectible Items

Women's diamond wedding ring set, never worn; (2) refrigerators; washer & dryer; microwave; upright deep freeze; (2) TVs; King bed (in a water bed frame); double bed; chest of drawers; wooden bookcases; quilt rack; several wildlife prints; extra nice 6 gal crock jar with handles; glass churn; oak table with 4 matching chairs; large wooden rocker; lamps and lamp tables; double recliner/loveseat; print sofa; cooking items; bedding; and table ware; with other items too numerous to mention;

Approximately 11:30 Tools & Livestock Handling Equipment & Hay

(2) power grease guns; other electric power tools; small amount of hand tools; oil, grease and other like supplies; (4) 18" deep x 36" wide x 20' long steel feed bunks; bale rings; Big Valley head gate; red stationary vet chute with head gate; Foremost hog/sheep catch chute; 8' bin sweep with motor; several 6 1/2 and 7' steel fence posts; 125 m/l Stroberg 10' and 12' panels, walk through gate panels, Garner Built panels and several steel painted panels various lengths and heights; H & S 24' hay feeder on wheels; several galvanized water tanks; (2) Cox portable creep feeders with creep gates; 260 m/l big bales grass/alfalfa net wrapped hay; and other items too numerous to mention.



1:00 PM Sharp - Vehicles

2001 Cadillac Deville, Northstar engine, 75,000 miles, white with tan leather interior, immaculate condition; 2007 Ram 2500 SLT, single cab pickup, only 17,000 miles, 4x4, 5.9 Cummins Diesel engine, 4 speed auto transmission, inferno red pearl paint with grey interior, like new; 1998 Dodge 2500 single cab pickup, 300,000 miles, 5.9 diesel, 4x4, auto transmission; 1995 Dodge 1/2 ton pickup, white, 318 V/8 engine, auto transmission, no rust, straight body; 1994 Honda 300 4 wheeler; 2002 Honda 350 4 wheeler, not running; John Deere Buck 4x4 4 wheeler, 3418 miles, 536hrs.

Tractors, Trailers & Other Equipment (following vehicles)

JD 4455 4 wheel drive tractor, 218 hrs on a new motor and rebuilt front end, sn: RW4455P010068, rear tires 480rx42, front tires 380rx28, 15 speed power shift transmission, triple hydraulics, sells with JD 265 loader with grapple bucket; JD 7210 4 wheel drive tractor, 8494 hrs, sn: RW7210H001058, power quad transmission, 2 wheel, rear tires 480x38, fronts 380x28", sells with JD 740 loader with 96" bucket. Consigned: 1998 JD 8400 track tractor, 250hp, 18 speed power shift transmission, approximately 2000 hours on new engine, brand new radiator; 1989 Featherlite 20' aluminum livestock trailer; 1999 Keifer 20' aluminum livestock trailer; PJ 20' flat bed with 5' beaver tail ramp, single wheel tandem axle; 10 bale gooseneck hay trailer; 8 bale gooseneck hay trailer; Consigned: 2003 35 ton Talbert detachable trailer with Honda motor and near new tires; JD X750 diesel lawn tractor with 60" deck, approx 500 hrs; H & S #370 tandem axle manure spreader, double beater, poly sides and floor, slop gate, brand new; extra nice, second owner, 853 NH baler, with 540 pto, 258 NH rake and a 489 NH 9' hay bine; Bush Hog 2615, 15' cutter with 1000 rpm shaft; (2) JD quick hitches; (2) 20' field cultivators

Wagner-Dent Auctions.com
1026 40th Street, Humeston, IA 50123

Don Wagner 641-931-6832 donaldwagner44@gmail.com
Jason Dent 515-231-5176 imaginerodeo@gmail.com
Art Snider 641-777-6413 snifarm@grm.net

More Pictures Online!

Find us on



"Wagner-Dent Auctions"

Terms: Cash, check or credit cards. No items will be removed until settled for. Sellers or auction company are not responsible for accidents, errors in listings or lost items. Announcements made day of sale take precedence over any printed matter. When registering for a buyer number proper I.D. will be required.

Lunch and restroom onsite.

