

**2 LAND &
REAL
ESTATE**

AUCTIONS

YARMOUTH, IOWA

TUESDAY, NOVEMBER 12, 2013

AUCTION #1

Preview on Tuesday, Oct. 29th 10-11AM

AUCTION: NOVEMBER 12 @ 10 AM

YARMOUTH, IA

2 ½ miles south of Yarmouth on X31/205th Ave,
then ½ mile west on 210th Street.

Auction will be held on site.

124 Acres M/L - Sells in 2 Tracts

Tract #1 - 61 Acres M/L -

Approx. 47 acres tillable, balance is timber.

CSR on tillable 75 & 69.1 on entire farm.

Tract #2 - 63 Acres M/L -

Approx. 41 acres tillable, balance is timber &
small pond CSR on tillable of 58.8 & 53 on
entire farm.

2014 Farming Rights to the Buyer!!

AUCTION #2

Preview on Tuesday, Oct. 29th 10-11AM

AUCTION: NOVEMBER 12 @ 11 AM

YARMOUTH, IA

Located at the corner of X31/205th Ave. &
Eastern Avenue. 20496 Eastern Ave.

Auction to be held on site.

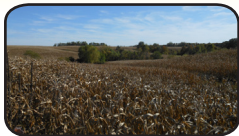
Two Buildings - Sells in 2 Tracts

Tract #1 - 30'x72' Morton Building

30'x72' Morton building, 14' height, concrete
floors, excellent storage building.

Tract #2 - 1,878 Sq.Ft. Building

1,878 sq.ft building has two bay shop area,
single car bay & front office area.



OWNER: C. TONKINSON FARMS CORP.

H. Eugene Anderson - Attorney



319.385.2000
STEFFESGROUP.COM

STEFFES GROUP, INC.

West Fargo, ND 58078 • Litchfield, MN 55355

Previously Know As Richard Realty & Auction

605 E Winfield Ave, Mt. Pleasant, IA 52641