

DECEMBER 2012

SUN	MON	TUES	WED	THUR	FRID	SAT
						1
2	3	4	5	6	7	8
9	10	11	12	13	14	15
16	17	18	19	20	21	22
23	24	25	26	27	28	29
30	31					



SEWELL



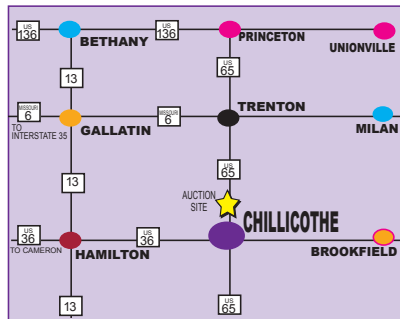
AUCTION

DAVID WALKER

SERVICE

RETIREMENT AUCTION

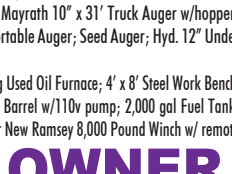
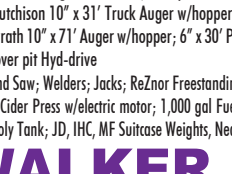
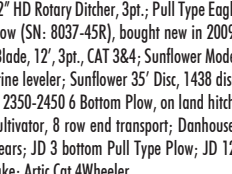
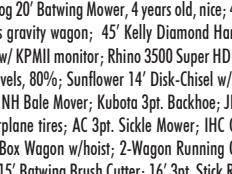
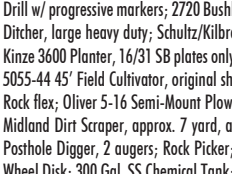
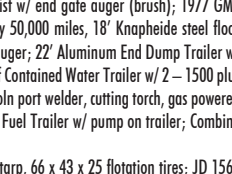
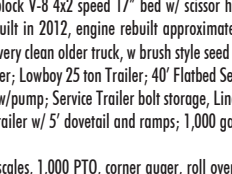
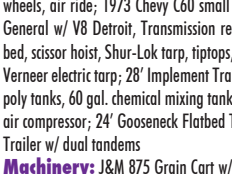
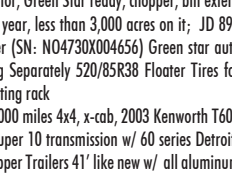
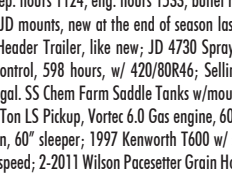
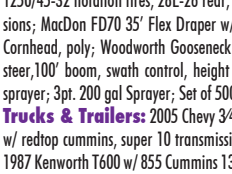
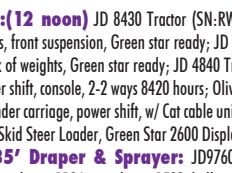
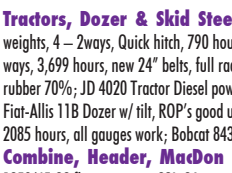
Auction Located 2 Miles North of Chillicothe, MO on US 65 to Auction Site. Follow Signs.



10:00 A.M.

SATURDAY, DECEMBER 1, 2012

10:00 A.M.



Tractors, Dozer & Skid Steer: (12 noon) JD 8430 Tractor (SN:RW8430P027299) Mfd. w/ ILS w/ full rack of weights, 4 - 2ways, Quick hitch, 790 hours, front suspension, Green star ready; JD 8520T Tractor (SN: RW8520T91215) 4 - 2 ways, 3,699 hours, new 24" belts, full rack of weights, Green star ready; JD 4840 Tractor Powershift axle mount duals, 18.4x42 rubber 70%; JD 4020 Tractor Diesel power shift, console, 2-2 ways 8420 hours; Oliver 1850 Tractor Diesel w/ oliver hyd loader; Fiat-Allis 11B Dozer w/ tilt, ROP's good under carriage, power shift, w/ Cab catle unit, put new tach in when overhauled showing 2085 hours, all gauges work; Bobcat 843 Skid Steer Loader, Green Star 2600 Display w/ Starfire ITC Receiver

Combine, Header, MacDon 35' Draper & Sprayer: JD9760sts Combine (SN:H097605721050) 4x4 w/ 1250/45-32 flotation tires, 28L-26 rear, sep. hours 1124, eng. hours 1533, bullet rotor, Green Star ready, chopper, bin extensions; MacDon FD70 35' Flex Draper w/ JD mounts, new at the end of season last year, less than 3,000 acres on it; JD 893 Cornhead, poly; Woodworth Gooseneck Header Trailer, like new; JD 4730 Sprayer (SN: N04730X004656) Green star auto steer, 100' boom, swath control, height control, 598 hours, w/ 420/80R46; Selling Separately 520/85R38 Floater Tires for sprayer; 3pt. 200 gal Sprayer; Set of 500 gal. SS Chem Farm Saddle Tanks w/mounting rack

Trucks & Trailers: 2005 Chevy 34 Ton LS Pickup, Vortec 6.0 Gas engine, 60,000 miles 4x4, x-cab, 2003 Kenworth T600 w/ redtop cummins, super 10 transmission, 60" sleeper; 1997 Kenworth T600 w/ super 10 transmission w/ 60 series Detroit; 1987 Kenworth T600 w/ 855 Cummins 13 speed; 2-2011 Wilson Paresetter Grain Hopper Trailers 41' like new w/ all aluminum wheels, air ride; 1973 Chevy C60 small block V-8 4x2 speed 17" bed w/ scissor hoist w/ end gate auger (brush); 1977 GMC General w/ V8 Detroit, Transmission rebuilt in 2012, engine rebuilt approximately 50,000 miles, 18' Knapheide steel floor bed, scissor hoist, Shur-Lok tarp, tiptops, very clean older truck, w brush style seed auger; 22' Aluminum End Dump Trailer w/ Verneer electric tarp; 28' Implement Trailer; Lowboy 25 ton Trailer; 40' Flatbed Self Contained Water Trailer w/ 2 - 1500 plus poly tanks, 60 gal. chemical mixing tank w/pump; Service Trailer bolt storage, Lincoln port welder, cutting torch, gas powered air compressor; 24' Gooseneck Flatbed Trailer w/ 5' dovetail end ramps; 1,000 gal Fuel Trailer w/ pump on trailer; Combine Trailer w/ dual tandems

Machinery: J&M 875 Grain Cart w/ scales, 1,000 PTO, corner auger, roll over tarp, 66 x 43 x 25 flotation tires; JD 1560 Drill w/ progressive markers; 2720 Bushhog 20' Batwing Mower, 4 years old, nice; 42" HD Rotary Ditcher, 3pt.; Pull Type Eagle Ditcher, large heavy duty; Schultz/Kilbros gravity wagon; 45' Kelly Diamond Harrow (SN: 8037-45R), bought new in 2009; Kinze 3600 Planter, 16/31 SB plates only w/ KPMII monitor; Rhino 3500 Super HD Blade, 12', 3pt., CAT 3&4; Sunflower Model 5055-44 45' Field Cultivator, original shovels, 80%; Sunflower 14' Disk-Chisel w/stine leveler; Sunflower 35' Disc, 1438 disc, Rock flex; Oliver 5-16 Semi-Mount Plow; NH Bale Mover; Kubota 3pt. Backhoe; JD 2350-2450 6 Bottom Plow, on land hitch; Midland Dirt Scraper, approx. 7 yard, airplane tires, AC 3pt. Sickle Mower; IHC Cultivator, 8 row end transport; Danhouser Posthole Digger, 2 augers; Rock Picker; Box Wagon w/hoist; 2-Wagon Running Gears; JD 3 bottom Pull Type Plow; JD 12' Wheel Disk; 300 Gal. SS Chemical Tank; 15' Batwing Brush Cutter; 16' 3pt. Stick Rake; Artic Cat 4Wheeler

Grain Handling Equipment: Hutchison 10" x 31' Truck Auger w/hopper; Mayrath 10" x 31' Truck Auger w/hopper; Westfield 10" x 71' Auger w/ hopper; Mayrath 10" x 71' Auger w/hopper; 6" x 30' Portable Auger; Seed Auger; Hyd. 12" Under Truck Auger 16'; Sukup Conveyor, drive over pit Hyd-drive

Tools & Misc: (10 am) Shop Tools; Band Saw; Welders; Jacks; ReZnor Freestanding Used Oil Furnace; 4' x 8' Steel Work Bench, 2" top; 1 1/2" Tow Cable; Pull Type Dolly; Cider Press w/electric motor; 1,000 gal Fuel Barrel w/110v pump; 2,000 gal Fuel Tank; Bowling Alley Runs; Truck Hitch; 300 gal. Poly Tank; JD, IHC, MF Suitcase Weights, Near New Ramsey 8,000 Pound Winch w/ remote

DAVID WALKER, OWNER

660-214-0293

REALTOR
NAA
Auctioneer

Missouri Professional Auctioneers Association
MBA
AARE
Accredited Auctioneer Real Estate

Full Service **SEWELL** Fully Computerized
AUCTION SERVICE

Licensed Auctioneers Since 1978 CHILLICOTHE, MO. • (660) 646-4020
www.sewellauction.com or www.rafteronline.net

TERMS: CASH OR GOOD CHECK WITH PROPER I.D. - NOTHING REMOVED UNTIL SETTLED FOR. NOT RESPONSIBLE FOR ACCIDENTS, THEFT OR INADVERTENT ERRORS IN ADVERTISING. ALL ANNOUNCEMENTS MADE DAY OF SALE WILL TAKE PRECEDENCE OVER ANY ALL ADVERTISED MATERIALS.

AUCTIONEERS NOTE: This will be an outstanding auction of well-maintained equipment and vehicles...plan now to attend!
Not Responsible for Accidents - Everything Sold As Is. Lunch will be available at site.