



Saturday, December 8, 2018 11:00 a.m.



Earlham Community Center 150 E 1st St. • Earlham, Iowa

Earlham is West of Des Moines metro on I-80 to Exit #104, south 2 miles

Antiques & Collectibles!

- 16 1/2" Horse windmill weight
- 10" Dempster Horse windmill weight
- 2 Dunlop tire signs
- 1894 "Spittin Image" Daisy BB Gun In Orig Box
- Salesman Sample Cookstove



Large Collections of:

- Coins, Boyd Bears
- Die Cast Tractors
- Barbie Dolls
- Coca Cola Items
- 1000's of Yardsticks including 1950's Chevrolet
- Literally hundreds of Bullet pencils
- Miniature lamp collection



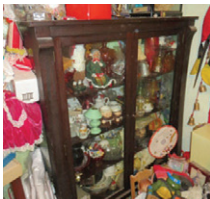
Also:

- Collector Plates, marbles
- Oak wall telephone
- Brass Items and Figurines, Bells
- Snowbabies, Ruby Red glass
- Cape Cod glass
- Buttons including Rock Island Lines, Military
- Jewelry, Keys, Cast Iron Door Stops
- Vintage Troll Dolls
- American Girl Dolls in orig boxes & others
- Goebel Monks
- Complete set of Dick and Jane Books
- Aladdin lamps including Alacite Electric
- Trunks, Primitive Kitchenware
- Cookbooks, Lard Press, Egg Crates
- Lots of glass miniatures
- Aluminum Christmas tree
- "Miller High Life" neon sign
- Banana box



Farm Primitives!

- Implement Seat
- Horse Collar
- Straps of brass saddle medallions
- Cast Iron dinner bell w/yoke
- Anvil, Bucksaw, Barn Lanterns
- Dozen Celluloid harness spreaders
- Double trees, lard presses
- Large cast iron cauldron
- Walking plow, 2 lawn windmills
- Lots of yard ornaments



This is a very partial listing!!!
Literally hundreds of boxes
stacked floor to ceiling!

Dozens of boxes of Yarn!!

Barry and Betty Lynch, Seller

Daugherty Auction & Real Estate Services, LLC.

Chad Daugherty ~ Owner/Auctioneer • Kelly Daugherty ~ Auctioneer
416 Greene St. Adel, IA (515) 993-4159 ~ d_auction@botmail.com

See Us on the Web at www.daughertyauction.com