

Aglron[®] Mt. Pleasant

Located at NEW Steffes Group Facility,
2023 235th Street, Mt. Pleasant, IA

THUR., DECEMBER 7, 2017 | 10AM

4WD TRACTORS

2014 John Deere 9410R, 907 hrs., powershift, deluxe cab
1992 John Deere 8960, 14,000 hrs.

MFWD TRACTORS

2006 New Holland TG210, 2,670 hrs., powershift
2006 John Deere 5325, 1,300 hrs., 12 spd. w/ power reverser
1997 John Deere 6200L, 6,252 hrs., diesel, partial powershift
Massey Ferguson 6280, cab
Massey Ferguson 3140, 9,831 hrs

2WD TRACTORS

1967 John Deere 3020, 7,517 hrs., powershift
Case 730, dual range trans.

ANTIQUE TRACTORS

Case DC
Oliver 70

COMBINES

2015 CASE-IH 5140 AFS, 181 sep, 251 eng. hrs., PRWD
2013 CASE-IH 8230 AFS, 900 sep, 1,200 eng. hrs., PRWD
2011 CASE-IH 8120 AFS, 1,161 sep, 1,618 eng. hrs, PRWD
2012 John Deere S670, 1,083 sep, 1,660 eng. hrs., PRWD
2001 John Deere 9550, 2,030 sep, 3,035 eng. hrs., PRWD

COMBINES CONTINUED

1999 John Deere 9510 Maximizer, 2,384 sep., 3,349 eng. hrs., 2wd
1990 John Deere 9500, 3,044 sep, 4,275 eng hrs.

DRAPER HEAD

2014 CASE-IH 3162 flex draper head, hyd. fore/aft, 35'

GRAIN PLATFORM

2002 John Deere 922 Flex, 22'

CORN HEADS

2009 CASE-IH 3412, 12x30"
1998 John Deere 693, 6x30"

HEAD CART

J&M head cart, 24'

DOZER, EXCAVATOR & SKID STEER

2001 Komatsu D65EX-12, 11,629 hrs. Caterpillar D6D, 11,148 hrs. Caterpillar D5, 6,000 hrs. 2007 Caterpillar 308C-CR, 4,998 hrs. 2005 John Deere 160 CLC, 8,943 hrs. 2008 Bobcat S175, 2,616 hrs., 72" bucket

PLANTERS

John Deere 1760, Conservation MaxEmerge 2, 12x30"
2004 Case IH 1200 Planter, 16x30"
John Deere 7200, 6x30",
John Deere 7000

DRILLS

John Deere 750 no-till drill
IH 5400 no-till drill

TILLAGE

2008 McFarlane RD 4030RB, reel disk
Unverferth 112, disc ripper
John Deere 510, disc ripper
John Deere 26' field cultivator
Sukup 9400 row crop cultivator

GRAVITY WAGON & CARTS

2016 Parker 605 gravity flow
J&M 875 grain cart
Brent 640 grain cart
J&M 400 grain cart
Killbros gravity flow, 250 bu.

SPREADERS

New Leader 1610 fertilizer tender bed
New Holland 185, manure spreader

HAY EQUIPMENT

2009 Massey Ferguson/Hesston 2756A, round baler
Vermeer 605XL, round baler
John Deere 336, small square baler
2010 Massey Ferguson 1330 disc mower
Land Pride RCF2072 rotary cutter
Kuhn SR 112 Gill SpeedRake hay rake
Gnuse bale trailer

CART & SILAGE WAGON

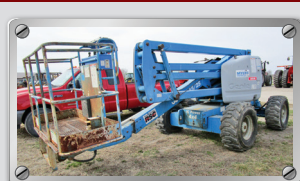
Schuler 220BF Feed Cart
Bader silage wagon

LIVESTOCK EQUIPMENT

(20) 30x90 cattle & calf feeder
18 Ton bulk bin

NEW LOCATION

Located at the NEW Steffes Group Facility,
2023 235th Street,
Mt. Pleasant, Iowa



From Myers Construction
Justin Myers 319.209.0429

CONCRETE EQUIPMENT

Pioneer 6" Vac Assist Pump, Deutz 75 hp motor (Model F42914)
Genie Z45/25 articulating boom lift, 3,600 hrs., 6' basket, Ford engine LRG-EFI, gas/LP
2013 Kubota 900 XT RTV, 488 hrs., 4x4 Millennium 20'+5' dovetail, deck over trailer, dual tandem axle
20' tilt bed trailer, tandem axle, 16' tilt bed, 4' stationary
16' tandem axle trailer
Wacker 420, 341 hrs., self-propelled roller, 36"
Wacker WP 1550, plate compactor
Whiteman riding power trowel, 1,149 hrs., diesel, hydro.

CONSIGNMENTS ACCEPTED ON

Monday, November 27th thru
Friday., December 1st, 8am - 5pm

LAST DAY: FRIDAY, DECEMBER 1

ONLINE BIDDING

For complete terms, details & photos

SteffesGroup.com

