

TWO DAY SAPP MACHINERY AUCTION

2409 Highway 9 • Buffalo Center IA

Note: In the event of a government order, Thursday's auction would be moved to Online Only also. As it sits at the time of this advertising design, it will be both live and online.

Wednesday, December 2nd

Online Only Auction for Small Line items

Lots begin closing at 5:00 pm

Items to include: tools, shop items, woodworking equipment, light trailers, lawnmowers, building materials, and miscellaneous.

Notable Items: Lumber, Landscaping Block, Corral Panels, Bulk Bins, Livestock Bunks, Orange 80 bu. Poly Hog Feeders, LB White Heater, Rock Boxes, Quick Hitches, Ag Wheels, 4x6 Utility Trailer, Eagle 9000lb Hoist, fuel tanks, Oil Furnace, more.

Thursday, December 3rd at 10:00 a.m.

Live auction with online simulcast bidding

Bruce Peterson Estate: '12 John Deere 9410R (3995 hrs, Duals, PTO, Two Owner), '16 Case IH Farmall 120C w/Case 630 Loader (MFWD, 556 hrs, like new), John Deere 4240 (8300 hrs, Quad Range, 42" rubber, Nice), John Deere A, '14 S670 Combine (1989/1366 hrs, Harvest Smart & Pro Drive System, Brent 1394 Grain Cart (Tarp, Scale, Camera, Duals), Case 730B Disk Ripper, John Deere 16' Mower, John Deere 980 Field Cultivator (24 1/2", 5 bar harrow), 12' Pull Type Box Scraper (like new), Combine & Tractor Duals, Weights, more.

Tractors & Attachments: '12 Case IH MX 290 (3989 hrs, MFD, Duals, 5 valves, Luxury Cab, Nice!), John Deere 4650 (9000 hrs, good rubber, duals, rock box, PS), White 2-70 (Recent Overhaul, Open Station), International 3788 2+2 (Rear Duals, Local Retirement), Farmall 706 with Schwartz Loader (Gas, Cab), Allis Chalmers D15 (good runner, good rubber), John Deere B (1939, Newer Rubber), Westendorf WL42 Loader, New Brute Skidloader Attachments, more.

Tillage & Planting Equipment: John Deere 2700 Plow (5 bottom), Case IH 730B Disk Ripper (lead shanks), IH 55 Chisel Plow (15 shank), John Deere BWF Disk, IH 480 Disk, John Deere 200 Rolling Crumbler, John Deere 985 Field Cultivator (42', harrow), John Deere 960 Field Cultivator, John Deere 1010 Field Cultivator, Allis Chalmers Chisel Plow (8'), more.

Combines, Heads, Wagons & Grain Handling: '14 John Deere S670 (1776/1372 hrs, Duals, Nice), '05 John Deere 9760 STS (2912 Separator Hrs, Chopper, Duals, Bin Ext.), John Deere 7720 (good runner), '05 Drago N8TR 8R Corn Head, Case IH 863, Case IH 1020 Platform (20"), Grain Elevator, DMC Grain Cleaner, Killbros Gravity Wagon, Harvest King Gravity Wagon, Westfield 8060 Auger, Peck 10" Auger with Swing Hopper, Mayrath 10" Auger w/Swing Hopper, Several Smaller Augers, Choppers

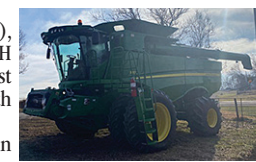
Hay & Livestock Equipment: Manure Spreader (540 PTO), New Hayrack on Gear, John Deere 27 Stalk Chopper, more.

Semis, Large Trailers, Small Trailers: '05 Freightliner Business Classic II (261,000 miles, 3126 Cat, 5 spd Allison Auto, Single Axle, Differential Lock), '04 Kenworth T800 (956,904 miles, C15 Cat, 10 spd), '00 Mack CH (500,000 miles, Air Ride, 10 spd Fuller), '95 International 9200 (3176 10.3L diesel, 10 spd), '05 Fontaine Step Deck Trailer (53', Spread Axle), '06 Jet Grain Trailer (New Tarp & brakes), '06 Mauer Steel Grain Trailer (40', Good Tarp), '01 Redi-Haul Tag Trailer (22' w/beavertail), Three Box Seed Tender Trailer, Diamond D Goose-neck Livestock Trailer, Several Homemade Trailers, more.

Construction Equipment, Pickups & Other: Caterpillar 613 Scraper, M&W Dynamometer, Two Toyota 7FGU35 Forklifts, (Gas, 8756 hrs, and 6390 hrs), '15 Ford F250 (6.7L Diesel, Crew Cab, Lariat, Only 78,000 miles), '05 Chevrolet 2500 (4x4, Crew Cab, Long Box, Contractor Rack, 128,329 miles), Frontier ST0521 Snowblower, '18 Honda Pioneer 1000 SXS (3455 miles, cab, like new), Fuel Barrel on Gear, New 10x12 Sheds, more.

Note: Dues to the increases in online platform costs, there will be a 2% buyer's premium (capped at \$1,000) for online bidders only on Thursday. No onsite premium.

To consign call



HALLBERG AUCTION

800-373-2255
www.hallbergauction.com
Jason Hallberg, Auctioneer