

NW Beaver Dr.

Development Land

Auction

"We Sell it the Day You Need it Sold!"



Friday Morn., December 15 • 10:00 a.m.

To be held on site:

6006 NW Beaver Dr. • Johnston, Iowa



General Description:

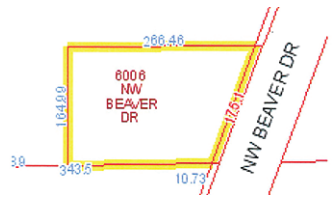
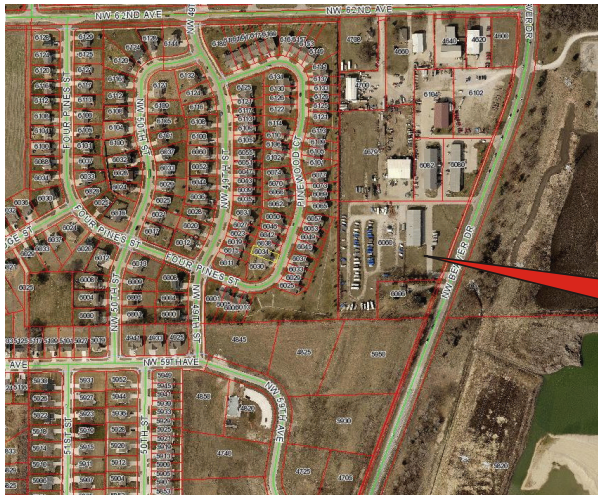
Offering this Prime Development lot consisting of 38,896 sq. Ft. Or .893 acres w/176.1 ft. frontage to NW Beaver Dr.! This property is being sold for development & is currently zoned M-1 Light Industrial District.

Neighborhood Description:

Beaver Drive is a Fast growing, high traffic area of Johnston! The 2016 Special Census reveals that Johnston's current population is 20,460.

Taxes: Pending

Terms: Cash, 10% down payment day of auction w/balance due at closing on or about January 15, 2018. Possession at closing. Sold w/NO contingencies.



Neighbor's Street view

Daugherty Auction & Real Estate Services, LLC.

Chad Daugherty ~ Owner/Auctioneer

Kelly Daugherty ~ Auctioneer

Jamie Bergkamp ~ Closing Attorney

416 Greene St. Adel, IA (515) 993-4159 ~ d_auction@hotmail.com

See Us on the Web at www.daughertyauction.com

The information in this brochure is from sources deemed to be reliable but it cannot be guaranteed by Daugherty Auction and Real Estate Services, LLC.